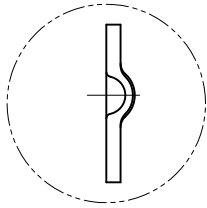
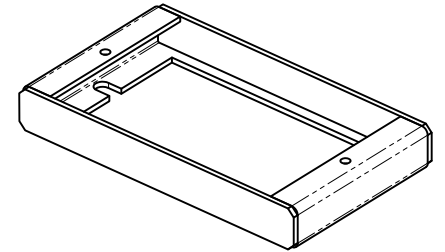
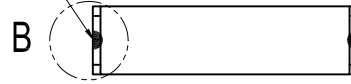
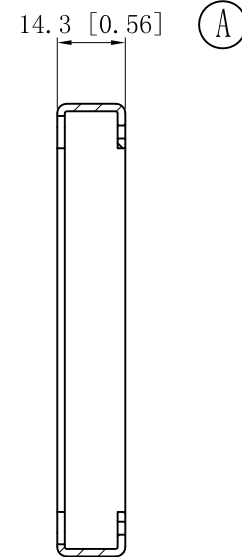
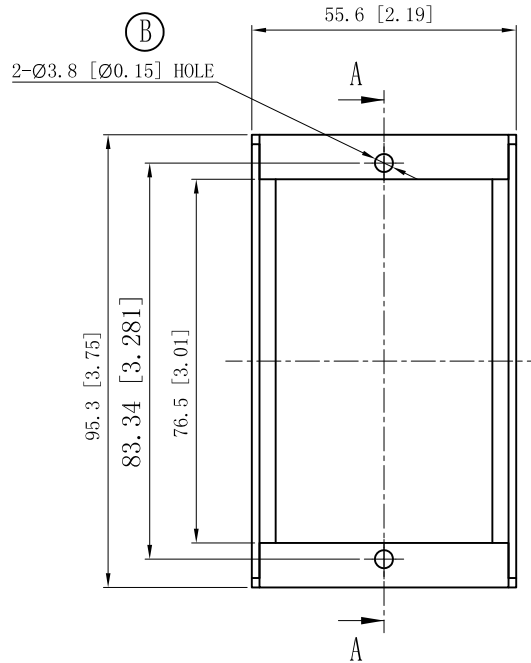
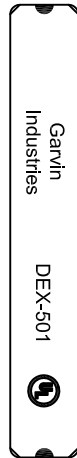


SIDES	BOTTOM
2 PCS #6-32×1-1/2 screws , per polybag	
Material:Steel-0.0625"-G60 Galvanized	

4 PLACES SPOT WELDING



WELDING STYLE DETAIL VIEW B



CUTAWAY VIEW A-A

DESCRIPTION
TRADE REFERENCE TERMS

This data sheet is for reference only .GARVIN INDUSTRIES reserves the right to make changes to the design without prior notice.

STANDARD PACKING	GARVIN INDUSTRIES			
25 PCS				
	TITLE			
	SIZE A4	DWG NO.	DEX-150	REV D
	DATA SHEET			