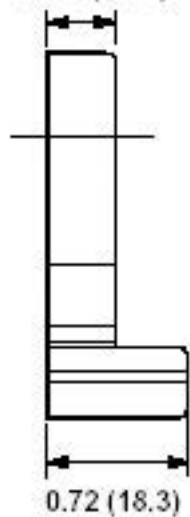


11/32 (8.73)

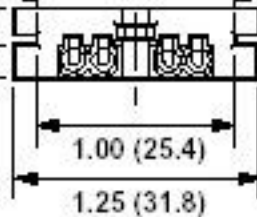


2.04 (51.8)

0.38 (9.7)

0.19 (4.8)

1.171 (29.7)



1.00 (25.4)

1.25 (31.8)

1.17 (29.7)

1.00 (25.4)

0.055 (1.40)
0.052 (1.32)

(FOR #18 GA. PANEL)

0.055 (1.40)
0.052 (1.32)

(FOR #18 GA. PANEL)