

DATE:	LOCATION:
TYPE:	PROJECT:
CATALOG #:	

FEATURES

- Superior color consistency within a 3-step MacAdam ellipse and greater than 80 CRI
- Available in 2', 4' or 8' lengths
- Optional integral emergency battery pack
- Heavy die-formed steel channel with 100% acrylic formed diffuser
- Surface mount, wall mount
- Occupancy controlled dimming of the LEDs increases energy savings while maintaining base light levels in stairwells at all times (see Occupancy Sensor section below)



CONTROL TECHNOLOGY



SPECIFICATIONS

CONSTRUCTION

- Housing, wireway, and ends are formed from code-gauge steel. Housing components act as heat sink for LED heat dissipation. Knockouts are provided for electrical access and mounting
- White painted parts are treated with a five-stage phosphate bonding process and finished with high reflectance baked enamel
- Shielded with 100% frosted prismatic acrylic lens

ELECTRICAL

- Long-life LEDs are rated for 60,000 hours at L80 lumen maintenance.
- Standard 0–10V dimming with High/Low integrated control outputs
- Superior drivers and long-life LEDs provide quality illumination for prolonged service life. Drivers < 10% THD at 120V, power factor >0.95

CONTROLS

- Hubbell Control Solutions internally mounted NX OMNI Passive Infrared Occupancy sensor is standard. Default settings: 15 min. unoccupied sensor dims luminaire to 50% output, once occupied luminaire returns to 100% output; never turning entirely off. LED indicator for easy verification of coverage. Coverage is 1:2.75 (mounting height: coverage ratio) up to 12', minimum 8' mounting height. Enables Intelliscope™ feature when paired with NX Bluetooth® mobile App, providing real time visibility of motion for improved accuracy of sensor sensitivity and time delay adjustments. Additional settings available within the NX Bluetooth mobile app
- NX Distributed Intelligence™ provides options for standalone and networked integrated sensor with wired or wireless connectivity for NX system deployments
- NX is available in U.S., Canada and Mexico. For other locations consult factory

CERTIFICATIONS

- All luminaires are built to UL 1598 and 2108 standards, and bear appropriate CSA c/US labels. Damp location labeling is standard

RELATED PRODUCTS

8 [LBIL](#)

CERTIFICATIONS (CONTINUED)

- Emergency equipped fixtures are listed to UL924 standards for emergency situations. Adheres to LM79, LM80, and TM21 industry standards. The DTS, Dimming Bypass Module, is for emergency circuit control loads including sensors and wireless systems listed to UL924. See page 4 for wiring diagram. [Link to Dimming Bypass Module Specification sheet.](#)
- DLC® (DesignLights Consortium) Qualified, with some Premium Qualified configurations. Please refer to the DLC website for specific product qualifications at [www.designlights.org](#)

WARRANTY

- 5 year warranty
- See [HLI Standard Warranty](#) for additional information

KEY DATA	
Lumen Range	1630–9502
Wattage Range	13.8–67.6
Efficacy Range (LPW)	112–142
Reported Life (Hours)	L80/60,000
Input Current (mA)	115–560

Example: ESL4-40ML-FAW-EDU-NXOS

CATALOG #	
-----------	--

ESL								W				ED	
Model		Size		Color Temp		Lumen Output¹		Lens		Distribution		Driver	
ESL	Escalate Stairwell Luminaire	2	2'	30	3000K	VW	2' (1700), 4' (3300), 8' (6600)	FA	Frosted Acrylic	W	Wide Distribution	ED	0–10V Dimming²
		4	4'	35	3500K	VWHE	4' (3200), 8' (6400)	FP	Frosted Polycarbonate				
		8	8'	40	4000K	MW	2' (2200), 4' (3700), 8' (7400)						
				50	5000K	MWHE	2' (2000), 4' (3600), 8' (7200)						
						LW	2' (2400), 4' (4100), 8' (8200)						
						LWHE	2' (2600), 4' (4000), 8' (8000)						
		ML	2' (3500), 4' (4600), 8' (9200)										
		MLHE	4' (4600), 8' (9200)										
		HL	4' (5800)										
		HLHE	4' (5500)										
				See Lumen Tables below.									

Voltage		Options		Control Options⁷	
U	120V–277V	ELL14	Emergency Battery Pack, 10W¹⁵	NXOS	NX OMNI, PIR Occupancy Sensor, Dimming Daylight Harvesting, Standard
347	347V³	DTS	Dimming Bypass Module³⁶	NXS	NX LMI, PIR Occupancy Sensor, Dimming Daylight Harvesting
		GLR	Fast Blow Fuse	NXOSW	NX OMNI Wireless, PIR Occupancy Sensor, Dimming Daylight Harvesting
				NXSW	NX LMI Wireless, PIR Occupancy Sensor, Dimming Daylight Harvesting
				HFU	High Frequency Ultra-sonic Occupancy Sensor⁸

NX Distributed Intelligence™ Lighting Controls:

Supports both indoor and outdoor applications in a variety of deployment options- wired, wireless, hybrid.
Integrates with and enables a wide array of luminaires including those with SpectraSync Color Tuning Technology.



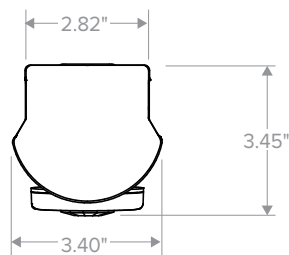
NX INTEGRATED CONTROLS REFERENCE								
NX Option	Sensor	Networkable	Scheduling	Occupancy	Daylight Harvesting	0–10V Dimming	On/off Control	Bluetooth® App Programming
<u>NX Standalone</u>								
NXOS	NXSMP-OMNI	No	Yes	Yes	Yes	Yes	Yes	Yes
NXS	NXSMP-SMI	No	Yes	Yes	Yes	Yes	Yes	Yes
<u>NX Networked – Wireless</u>								
NXOSW	NXSMP-OMNI	Yes	Yes	Yes	Yes	Yes	Yes	Yes, Bluetooth App
NXSW	NXSMP-SMI	Yes	Yes	Yes	Yes	Yes	Yes	Yes

DELIVERED LUMENS

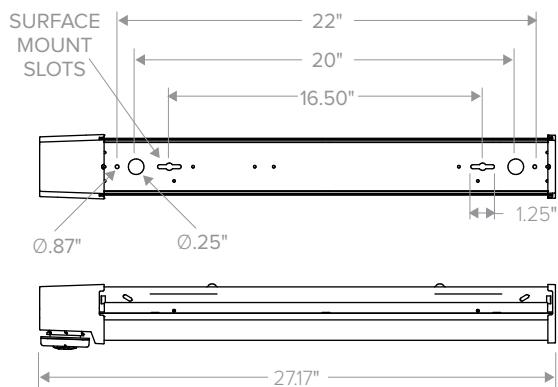
Fixture	3000K			3500K			4000K			5000K		
	LUMENS	WATTS	LPW	LUMENS	WATTS	LPW	LUMENS	WATTS	LPW	LUMENS	WATTS	LPW
ESL2-VW	1630	13.8	118	1659	13.8	120	1681	13.8	122	1736	13.8	126
ESL2-MW	2162	18.2	119	2201	18.2	121	2229	18.2	122	2303	18.20	127
ESL2-MWHE	1952	15.5	126	1987	15.5	128	2013	15.5	130	2079	15.5	134
ESL2-LW	2401	20.4	118	2444	20.4	120	2475	20.4	121	2557	20.4	125
ESL2-LWHE	2514	20.2	124	2559	20.2	127	2592	20.2	128	2677	20.2	133
ESL2-ML	3391	29.0	117	3452	29.0	119	3496	29.0	121	3611	29.0	125
ESL4-VW	3221	26.7	121	3279	26.7	123	3321	26.7	124	3430	26.7	128
ESL4-VWHE	3099	24.4	127	3155	24.4	129	3195	24.4	131	3300	24.4	135
ESL4-MW	3591	30.4	118	3656	30.4	120	3702	30.4	122	3824	30.4	126
ESL4-MWHE	3485	27.6	126	3548	27.6	129	3593	27.6	130	3712	27.6	134
ESL4-LW	3972	34.4	116	4043	34.4	118	4095	34.4	119	4230	34.4	123
ESL4-LWHE	3892	29.1	134	3962	29.1	136	4013	29.1	138	4145	29.1	142
ESL4-ML	4475	40.1	112	4556	40.1	114	4614	40.1	115	4766	40.1	119
ESL4-MLHE	4461	33.8	132	4541	33.8	134	4599	33.8	136	4751	33.8	141
ESL4-HL	5658	49.5	114	5760	49.5	116	5833	49.5	118	6026	49.5	122
ESL4-HLHE	5393	40.8	132	5490	40.8	135	5560	40.8	136	5744	40.8	141
ESL8-VW	6442	53.4	121	6558	53.4	123	6642	53.4	124	6861	53.4	128
ESL8-VWHE	6198	48.8	127	6310	48.8	129	6390	48.8	131	6601	48.8	135
ESL8-MW	7182	60.8	118	7311	60.8	120	7405	60.8	122	7649	60.8	126
ESL8-MWHE	6970	55.2	126	7095	55.2	129	7186	55.2	130	7423	55.2	134
ESL8-LW	7944	68.8	116	8087	68.8	118	8190	68.8	119	8460	68.8	123
ESL8-LWHE	7784	58.2	134	7924	58.2	136	8025	58.2	138	8290	58.2	142
ESL8-ML	8950	80.2	112	9111	80.2	114	9227	80.2	115	9532	80.2	119
ESL8-MLHE	8922	67.6	132	9083	67.6	134	9199	67.6	136	9502	67.6	141

DIMENSIONS

ESL END VIEW



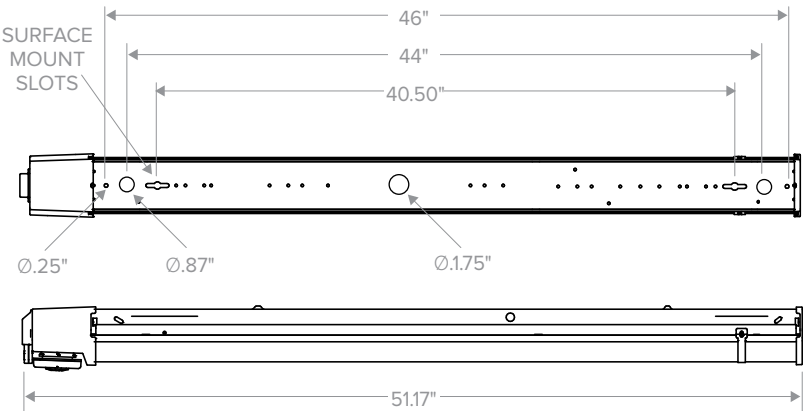
ESL 2' DIMENSIONS



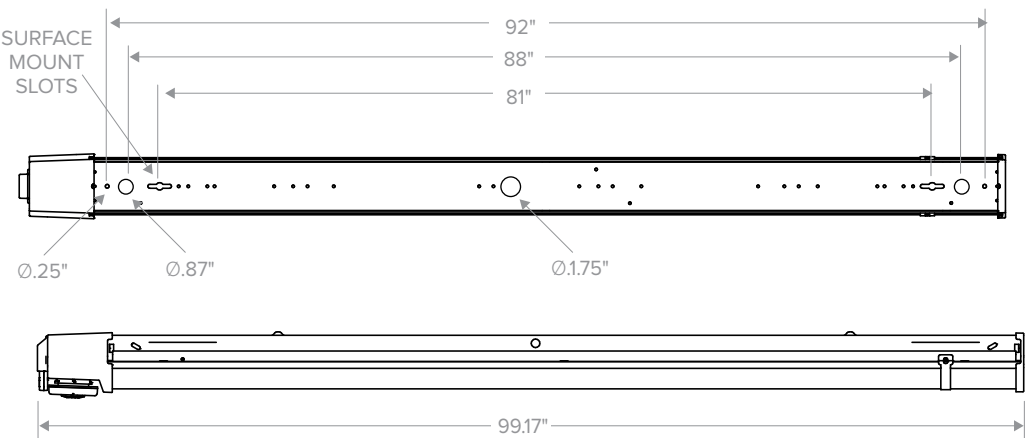
DATE:	LOCATION:
TYPE:	PROJECT:
CATALOG #:	

DIMENSIONS

ESL 4' DIMENSIONS

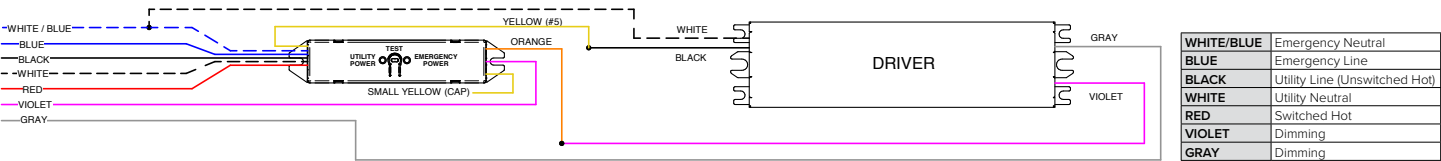


ESL 8' DIMENSIONS



ADDITIONAL INFORMATION

DTS WIRING DIAGRAM (0–10V DIMMING DRIVER SHOWN)



MAX AMBIENT OPERATING TEMPERATURE

Ambient Temp. for Driver Availability		
Voltage	Lumen Package	Ceiling/Surface/Mount
2'	VW	35
	MW	35
	LW	35
	ML	35
4'	VW	30
	MW	30
	LW	30
	ML	30
	HL	25
8'	VW	30
	MW	30
	LW	30
	ML	30
	HL	25

PHOTOMETRY

ESL-40ML-FAN-EDU

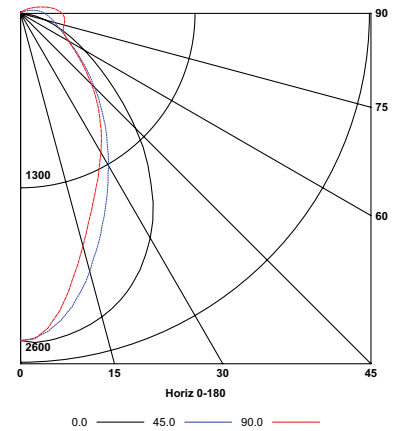
LUMINAIRE DATA

Test No.	20376
Description	Escalate™ Surface, Narrow LED 4ft, Frosted Linear Prismed Lens
Delivered Lumens	4742
Watts	37.70
Efficacy	126
Mounting	Recessed
Spacing Criterion	0° = 1.18 90° = 0.77

ZONAL LUMEN SUMMARY

Zone	Lumens	% Luminaire
0-30	1542	32.5
0-40	2326	49.1
0-60	3518	74.2
0-90	4385	92.5
0-180	4742	100.0

INDOOR CANDELA PLOT



ESL4-40ML-FAW-EDU

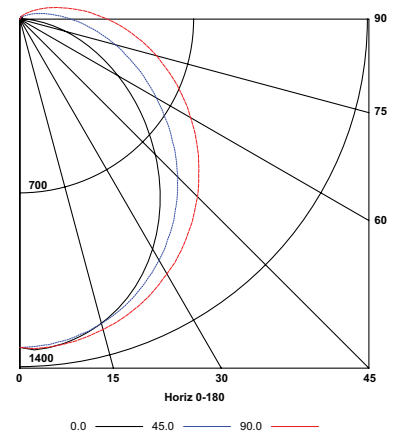
LUMINAIRE DATA

Test No.	20373
Description	Escalate™ Surface, Narrow LED 4ft, Frosted Linear Prismed Lens
Delivered Lumens	4615
Watts	40.10
Efficacy	115
Mounting	Recessed
Spacing Criterion	0° = 1.18 90° = 0.77

ZONAL LUMEN SUMMARY

Zone	Lumens	% Luminaire
0-30	1029	22.3
0-40	1688	36.6
0-60	3019	65.4
0-90	4248	92.0
0-180	4615	100.0

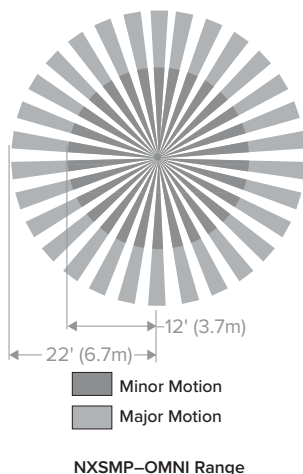
INDOOR CANDELA PLOT



NX SENSOR DATA

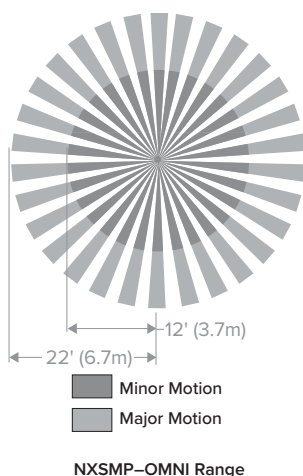
OMNI® (NXOS) PIR OCCUPANCY SENSOR, DIMMING DAYLIGHT HARVESTING

The NX OMNI Indoor Sensor Module houses a PIR motion sensor, a daylight sensor, and a Bluetooth® radio allowing wireless configuration and programming using the free Device Setup App



OMNI (NXOSW) WIRELESS, PIR OCCUPANCY SENSOR, DIMMING DAYLIGHT HARVESTING

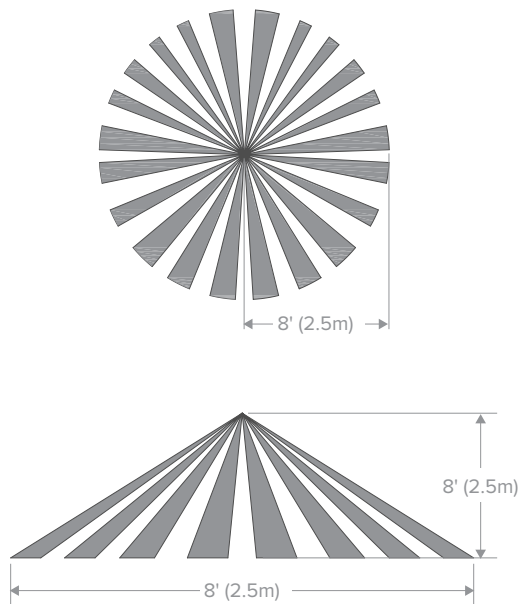
The NX wireless option allows the fixture to communicate with other wireless equipped fixtures and with a building wide NX networked system. NXOSW allows for multiple stairwell fixtures to be linked together to accommodate different points of floor entry



DATE:	LOCATION:
TYPE:	PROJECT:
CATALOG #:	

LMI (NXS) PIR OCCUPANCY SENSOR, DIMMING DAYLIGHT HARVESTING

The NX Low Mount Indoor Sensor Module has the same features as the OMNI version and is the ideal solution for integrated fixture control in applications where aesthetics demand that an exposed sensor has a limited visual impact



LMI (NXSW) WIRELESS, PIR OCCUPANCY SENSOR, DIMMING DAYLIGHT HARVESTING

The NX Low Mount Indoor Sensor Module wireless option allows the fixture to communicate with other wireless equipped fixtures and with a building wide NX networked system. NXSW allows for multiple stairwell fixtures to be linked together to accommodate different points of floor entry

