

## PBMW Multi Wire Panelboard Lugs



Fig. 1



Fig. 2

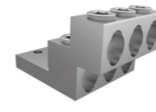


Fig. 3



Fig. 4

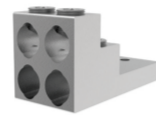


Fig. 5



Fig. 6

- Manufactured from high strength 6061-T6 aluminum alloy.
- Electro-Tin plated.
- UL 486A/B 90° C Listed and CSA Certified.
- Suitable for use in circuits rated 35KV or less; proper high voltage spacing and insulation techniques must be used.
- Stacked design.
- Suitable for use with either copper or aluminum conductors.
- Multi-Wire hole can terminate two conductors per port.
- When using two conductors, parallel wires must be identical.
- UL File E6207

Item ID	Figure Number	Conductor Range	Number of Ports	Bolt/Stud Size	Bolt/Stud Size (mm)	Mounting Hole	Mounting Hole	Length	Length (mm)	Width	Width (mm)	Height	Height (mm)	Hex Size	Standard Package	NAED/UP C Number
PBMW-4-7 50-12	5	(1) 750 kcmil-2 (2)	4	1/2	12.7	1.7500	44.5	5.6870	144.4	2.6200	66.5	3.0000	76.2	1/2	10	07836691 84372