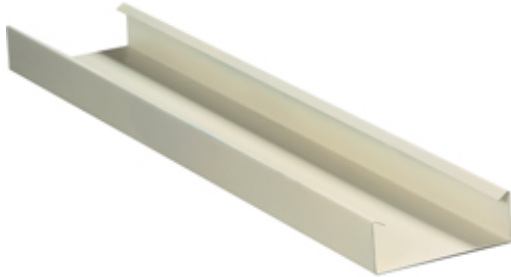
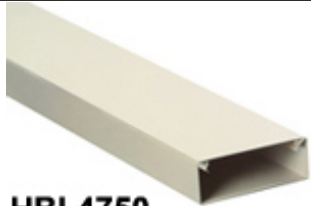



# HBL4750B10IV -- Metal Raceway, HBL4750 Series, Base, 10', Ivory



The HBL4750 series is a 2-piece, metal raceway. A flexible channel divider provides industry leading data capacity in the same profile with a 2/3 datacom split. Greater capacity offers more room for moves, adds, and changes. Raceway channel can also be used with no divider for maximum cable fill in single service applications. Extensive line available of external, internal, flat, tee and entrance end fittings. Wide variety of overlapping cover plates provide flexibility for power, data, voice, audio and video applications. Hubbell's HBL4750 Series Metal Raceway is available in 20' lengths, and is available in ivory or gray.

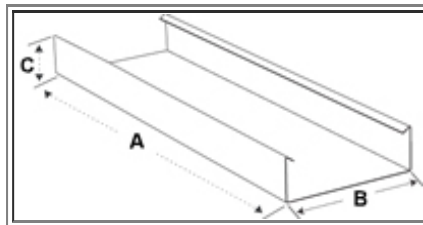
Product Specifications	
<b>Product</b>	 <p><b>HBL4750</b> Channel Area (sq. in.): 7.20"</p>
<b>Color</b>	Ivory
<b>Unit Package</b>	20' per carton
<b>Datasheet</b>	<a href="#">Click Here</a>
<b>Dimensions</b>	A: 120" (3048) B: 4.76" (120.9) C: 1.62" (41.20)
<b>Raceway Item</b>	Base
<b>Raceway</b>	 <p><b>Raceway Profiles</b></p>
<b>Catalog Page</b>	<a href="#">Click Here</a>

## FEATURES

- Available in ivory or gray powder coat finish.
- Allows up to 83 Category 5e or 59 Category 6 cables.
- HBL4750 Device Bracket Plate provides an excellent solution for power, data, voice, audio and video applications.
- Device Bracket Plate for use with Hubbell KP plates and Hubbell iSTATION™ modules and bezels.
- Provides flush finish with overlap feature to hide potential miscuts.
- Extensive line available: external, internal, flat, tee and entrance end fittings.
- 1¼” bend radius offers a fixed solution that does not have to be installed as an option.
- Large cross sectional area provides for maximum cable capacity throughout entire system.
- Flexible channel divider provides industry leading data capacity in the same profile with a 2/3 datacom split.
- By-Pass Divider opening accepts GFCI or surge devices to be mounted in 70/30 divided channel.
- Greater capacity offers more room for moves, adds and changes.
- 50/50 split available by utilizing standard divider and divider clips.
- Raceway channel can also be used with no divider for maximum cable fill in single service applications.
- Wide variety of overlapping cover plates provide flexibility for power, data, voice, audio and video applications.
- Cover plates help to conceal unsightly gaps caused by miscuts.
- Pre-cut cover options allow for 12” (305), 18” (343), 24” (495) and 36” (800) center mounting.

**SPECIFICATIONS**

- Material: Steel
- Finish: painted Ivory or Gray.
- UL Standard: UL5. E253976, E253830, E253833.
- NEC Article: 386.
- Conforms to ANSI/TIA-569-B.
- CSA Standard Listing: C22.2 no. 62, LR87514.



**Metal Raceway Wire Fill Capacities**

Power (THHN/T90 Nylon)			Voice		Data (Copper Cables)					Data (Multimode Fiber Optic Cables)		
14 AWG	12 AWG	10 AWG	4-Pair	25-Pair	Type RG59U	Cat. 5e	Cat. 6	Cat. 6A	Cat. 6 STP	(2) or (4) Fiber Round Cable	Fiber Optic Jumpers	Fiber Optic Zip Cord

Series	Channel Area (sq. in.)	Cable													
		Wire O.D. (in):	0.111	0.13	0.164	0.19	0.41	0.242	0.21	0.25	0.35	0.29	0.19	0.118	.12 X .24
		Wire Area (sq. in.):	0.0097	0.0133	0.0211	0.0283	0.1320	0.0460	0.0346	0.0491	0.0962	0.0660	0.0283	0.0109	0.0288
		Wire Fill Capacity	40%	40%	40%	40%	40%	40%	40%	40%	40%	40%	40%	40%	40%
HBL4750	No Barriers	7.20	296	216	136	102	22	63	83	59	30	44	102	264	100
A B	Barrier Centered Ch. A	3.10	127	93	58	44	9	27	36	25	13	19	44	114	43
	Barrier Centered Ch. B	3.30	127	93	58	47	10	29	38	27	14	20	47	121	46
A B	Barrier Offset Ch. A	2.10	86	63	39	30	6	18	24	17	9	13	30	77	29
	Barrier Offset Ch. B	4.30	176	129	81	61	13	37	50	35	18	26	61	158	60

Note: Pathway (Raceway) fill shall be 40% maximum.  
Raceway fittings and outlets/receptacles reduce the cross section of the raceway system, thus reducing overall cable fill capacity.

