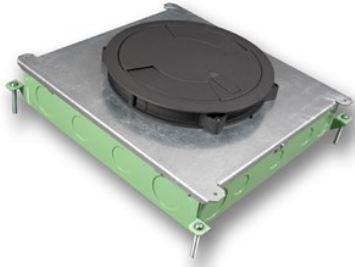


## RFB6E SIX COMPARTMENT SINGLE- OR MULTI-SERVICE RECESSED FLOOR BOX

RFB6E | [Wiremold](#)



### FEATURES & BENEFITS

This series of Floor Boxes are versatile activation solutions that offer six compartments for power, communication and/or audio video services to open space areas or directly to workstations. Designed for use with the Evolution Series Poke-Thru covers for a common look across various devices. These covers incorporate TopGuard protection to prevent water, dirt, and debris from entering the power and communication device compartments.

- **Can be installed in both concrete and wood floor** applications. Provides the first recessed wood floor box for both commercial and residential applications.
- **Available for bare concrete and terrazzo floors.** By using RFB6E-CTR Ring (sold separately) these boxes can be installed into bare concrete or terrazzo floors with a clean, aesthetic finish.
- **New lightweight "slab-on-grade" version.** Special fusion-bonded epoxy corrosion resistant paint finish allows for slab-on-grade use without the weight of cast iron material.
- **Accepts round Evolution™ Series Covers.** RFB6E Series Floor Box has been designed to accept the round 8" Evolution Series Covers increasing the ability to match aesthetics throughout the building.
- **Reduces overall cost by providing for most cabling requirements.**
- **Fully adjustable before and after the concrete pour.** Labor savings by adapting to various pour depths and conditions.
- **Range of conduit sizes.** Allows for most conduit schemes, even feed through capability, which saves time and money during installation.
- **UL Listed to U.S. and Canadian safety standards for tile, terrazzo, and the future UL requirement under UL514A and UL514C for the scrub water exclusion test for carpet and wood floors.**
- **Wide variety of mounting brackets.** Can adapt to most power and communication needs. Reduces overall life cycle cost.
- **Datacom connectivity options.** Accepts industry standard and proprietary devices from a wide range of manufacturers to provide a seamless and aesthetically pleasing interface for voice, data, audio, and video applications at the point-of-use. A wide selection of data and bezel options available for use with Ortronics® TracJack® and Series II devices.

### SPECIFICATIONS

#### GENERAL INFO

Product Series: Resource RFB  
Component Type: Boxes

Knockout Size: 3/4"-1 1/4"

**CONSTRUCTION INFORMATION**

Installation Location: On-Grade, Above-Grade

**BUY AMERICAN ACT COMPLIANCE**

Country Of Origin: MULTIPLE

Buy American Act Status: