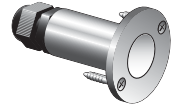
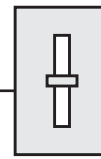
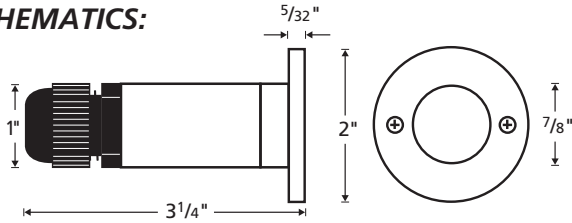


LED MiniDisc Light

NOW DIMMABLE!



SCHEMATICS:



APPLICATIONS

- ▶ Steps
- ▶ Aisles
- ▶ Paths
- ▶ Direction Lighting
- ▶ Information Lighting
- ▶ Decorative Lighting
- ▶ Merchandising
- ▶ Landscape Accents

DESCRIPTION:

Die cast aluminum, or stainless steel, recessed mini LED accent fixture with prism cover design. Low 0.24watt LED provides 80% energy savings vs. Xenon/Halogen technology. Dimmable. Fixture circuitry allows expandable system design from 1 to 200 fixtures per appropriate Class 2 LED driver. ETL listed for in-wall, in-floor, outdoor wet and outdoor burial applications. Offered in six LED colors and five fixture finishes.

FEATURES

- Safe 12 volt, Class 2 power supply (remote)
- Up to 100 fixtures per power supply
- Dimmable

5 fixture finishes:
Aluminum, Black, White,
Bronze, Stainless Steel

Suitable for

- In wall applications
- In floor applications
- Outdoor wet locations
- Outdoor burial locations

- Fits in any 1" diameter hole, 3-1/2" long

LED Module

- Low energy requirements of 0.24 watt per fixture
- 6 LED colors: Warm White, Cool White, Green, Blue, Red, Amber

ORDERING LOGIC:

LEDMD-XX-YY

XX = LED COLOR

WW = Warm White GR = Green
 CW = Cool White AM = Amber
 BL = Blue RD = Red

YY = FIXTURE FINISH

AL = Aluminum BK = Black
 BZ = Bronze SS = Stainless Steel
 WH = White

SPECIFICATIONS:

Voltage	12VDC
Fixture Energy Rating	12VDC, 45mA, 0.24 watts
LED Color Temperature	Warm White 3800K +/-200K, Cool White 7000K +/-200K
LED Life	Rated at 40,000 hours
LED Colors	Warm White, Cool White, Green, Blue, Red, Amber
Cover Finish	Aluminum, White, Bronze, Black, Stainless Steel
Barrel Finish	Aluminum, White, Bronze, Black, Stainless Steel
Construction	Both cover and barrel are die cast aluminum for corrosion protection, strength, weight, and consistency of finish.
Lens	Frosted Tempered Glass
Wiring Options	Up to 200 MiniDisc Lights per LED Driver by parallel wiring ("daisy chain") between fixtures. One wire completes chain. No custom cord required. NOTE: Use LW-18G-CL2 for all in-wall applications. Use LW-18G-BUR for all outdoor and burial applications.
Dimming	Dimmable with appropriate LED Magnetic Power Supply and dimmer. See instructions for details.
Agency Approval	ETL listed and labeled for wet, IC, ceiling, and direct burial applications.
Warranty	Two years aluminum or powder coated finish, 3 years stainless steel finish. See website for details.

PROJECT:	TYPE:
NOTES:	