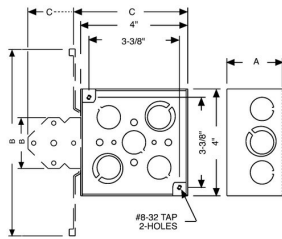




4 IN. SQUARE DRAWN BOXES - 1-1/4 TO 1-1/2 IN. DEEP WITH CONDUIT KO'S

4 in. Square Boxes, 1-1/2 in. Deep - Drawn with Conduit KO's
Raised Ground

A09



Catalog #: 192

APPLICATIONS

RACO® Boxes are installed in walls or ceilings for lighting fixtures, switches or receptacles
Square boxes are used where multiple conductor runs are split into two or more directions to bring power to a number of electrical devices
Drawn boxes are ideal for exposed work applications

PRODUCT FEATURES

Combination screw heads provide for faster installation
N/A

UL LISTED

File E195978

COMPLIANCES

All RACO® single gang, two gang, 4 in. square, and single gang gangable UL listed steel boxes are acceptable for use in 2-hour fire rated walls. For additional information, consult UL "Fire Resistance Directory" or the UL website at www.ul.com
MSDS
www.hubbell-rtb.com/certifications/Hubbell-RACO_MSDS_for_Steel_Boxes_and_Covers.pdf

FIRE RESISTANCE

Acceptable for use in 2-hour rated walls

GENERAL PRODUCT INFORMATION

Wiring System: Conduit
Country of Origin: USA

CONFIGURATION

Bracket Type: No Bracket
Drawn or Welded: Drawn
Raised Ground: Yes
Side Knockout(s): (8) 1/2 in. & (4) 3/4 in.
Bottom Knockouts(s): (2) 1/2 in. & (2) 3/4 in.

DRAWING DIMENSIONS

Dimension A: 1-1/2 in.

PRODUCT MEASUREMENTS

Depth: 1-1/2 in.
Cubic Inches (cm3): 21.0 (344.1)
Wt. Ea. (Lbs.): 0.660
Product Length (in.): 1.56
Product Width (in.): 4.00
Product Height (in.): 4.00

PACKAGING

Minimum Pack Qty.: 50
Std. Pkg.: 50
Product UPC-A Labeled: No
Weight (Lbs. Per/C): 66.00
Ship Carton Length (in.): 20.88
Ship Carton Width (in.): 9.00
Ship Carton Height (in.): 8.50
Ctn Weight (Lbs.): 33.00
Pallet Qty: 2750
UPC Number: 050169901922
I2of5: 50050169901927