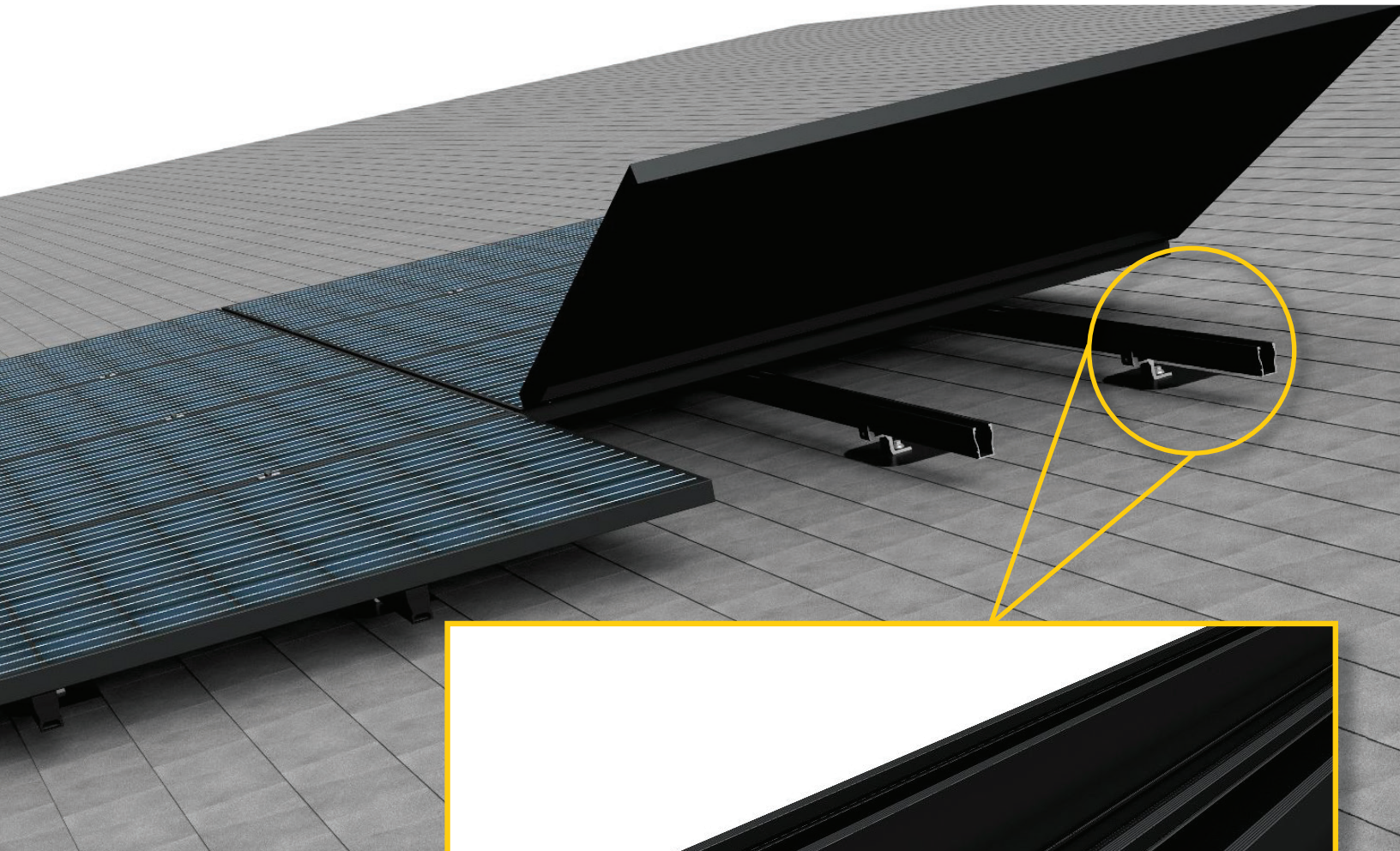


2019 Product Catalog

Q4 2019 - Updated MSRP effective Aug. 2019



UR-60
Page 4



Quality. Innovative. Superior.

SnapNrack Product Selector	2
SnapNrack Ultra Rail	3
SnapNrack Module Attachments	11
SnapNrack Accessories	12
SnapNrack RL Universal	15
SnapNrack Series 200	18

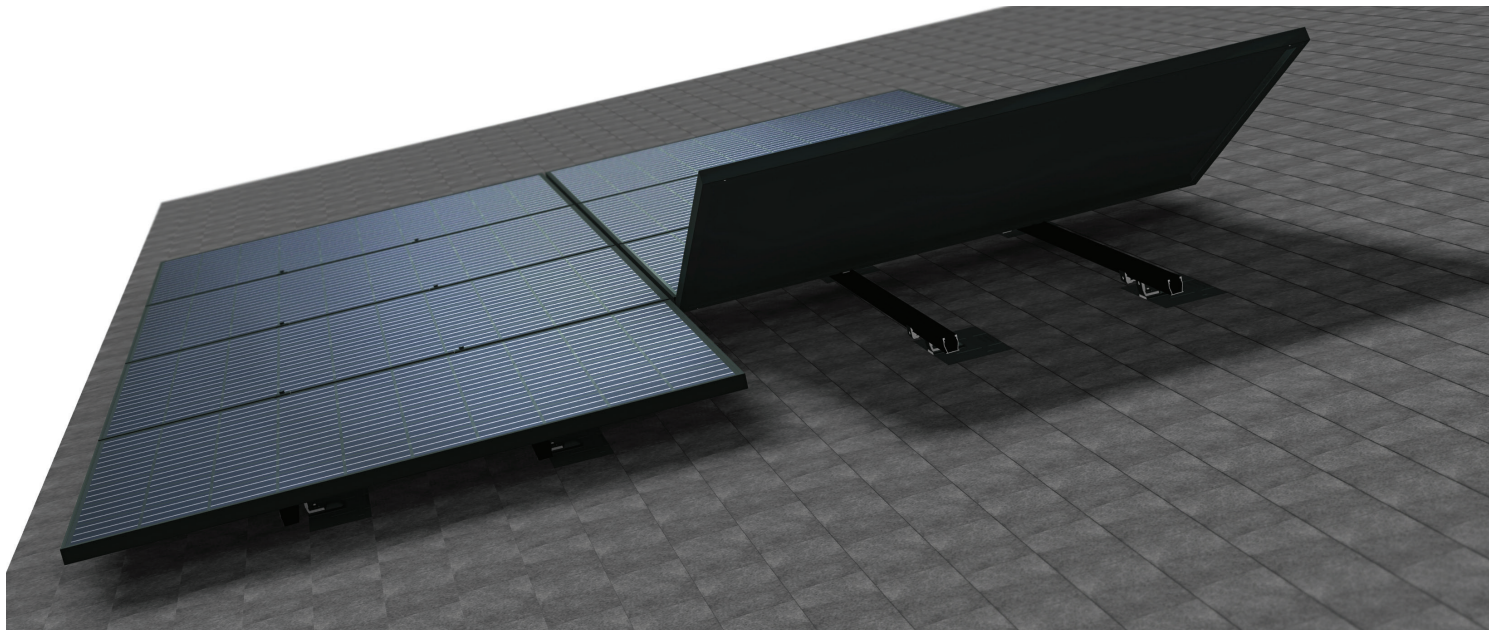
SnapNrack Mission

To provide products and services that simplify the process of installing solar systems and lower installation costs, maximize productivity and profits for our customers with top-notch quality.

SnapNrack Product Selector

Ultra Rail	RL-U
The ultimate rail system optimized for all regions. Features unique snap-in mounts and splices and the best wire management in the industry. Rail has a large open channel and compatible with our full suite of wire management accessories and module attachments.	The greatest labor efficiencies realized through elimination of rails. No longer are you dealing with 14 foot long sticks of rail both on the roof or in the warehouse. The intuitive design allows modules to lay down in place by a single installer. Focus on ergonomics and installation mechanics with features like topside bolting.

	Ultra Rail	RL-U
Composition Shingle	✓	✓
Tile	✓	
Standing Seam and Corrugated Metal	✓	
Universal End Clamps Keep Racking Hidden Underneath Array	✓	
Sleek Black Skirt for Front of Array	✓	✓
Integrated Wire Management Channel	✓	
Snap-in Wire Clamps, Junction Boxes and More	✓	✓
Module Frame Wire Management w/ Smart Clip & Wire Saver		✓
1½ inches Vertical Leveling	✓	✓
Flash Track w/ 6" North-South Adjustability		✓
Elimination of Rails for Improved Labor Efficiency		✓
Features for Single Person Install		✓
Capable of 6 ft. Spans	✓	✓
Capable of 8 ft. Spans	✓	



SnapNrack Ultra Rail **The Ultimate Value in Rooftop Solar**

Ultra Rail is the ultimate rail solution for mounting solar modules on the roof. The entire system is a snap to install utilizing new Ultra Rail Mounts that include snap-in brackets for attaching rail. Snap-in module clamps provide an intuitive install experience installers know and love.

- Industry-leading aesthetics with Universal End Clamps and snap-in End Caps that make the mounting system invisible underneath the array
- Unparalleled wire management solutions with accessories such as Junction Boxes, Universal Wire Clamps, MLPE Attachment Kits, and Conduit Clamps
- Low profile rail maintains the open channel with room for running wires resulting in a top quality finished install
- UR-40 has the largest span capabilities of any light rail solution
- UR-60 is a heavy duty profile for higher loading conditions

Ultra Rail



UR-40 Rail, Black



UR-40 Rail, Silver



UR-60 Rail, Black



UR-40 Splice



UR-60 Splice



UR-40 End Cap



UR-60 End Cap

Description	SKU	MSRP	QTY*	WT
UR-40 Rail				
UR-40 Rail, 168", Black (Bundle of 144, priced as each)	232-02451	\$55.37	144 EA	655 lbs
UR-40 Rail, 168", Silver (Bundle of 144, priced as each)	232-02450	\$51.76	144 EA	655 lbs
UR-40 Rail, 168", Mill (Bundle of 144, priced as each)	232-02449	\$45.25	144 EA	655 lbs
UR-40 Rail Set, 168", Black (Box of 8)	015-10202	\$509.42	1 Box	55 lbs
UR-40 Rail Set, 168", Silver (Box of 8)	015-10201	\$476.19	1 Box	55 lbs
UR-40 Rail, 168", Black (Box of 4)	015-10199	\$285.28	1 Box	28 lbs
UR-40 Rail, 168", Silver (Box of 4)	015-10200	\$266.67	1 Box	28 lbs
UR-60 Rail				
UR-60 Rail 168", Black (Bundle of 120, priced as each)	232-02483	\$72.55	120 EA	1015 lbs
UR-60 Rail 168", Silver (Bundle of 120, priced as each)	232-02482	\$65.25	120 EA	1015 lbs
UR-60 Rail 168", Mill (Bundle of 120, priced as each)	232-02481	\$55.86	120 EA	1015 lbs
UR-60 Rail Set, 168", Black (Box of 8)	015-10206	\$667.46	1 Box	75 lbs
UR-60 Rail Set, 168", Silver (Box of 8)	015-10205	\$600.30	1 Box	75 lbs
UR-60 Rail Set, 168", Black (Box of 4)	015-10197	\$373.78	1 Box	40 lbs
UR-60 Rail Set, 168", Silver (Box of 4)	015-10198	\$336.17	1 Box	40 lbs
Rail Accessories				
UR-40 Splice, Silver	242-01213	\$7.25	20 EA	10 lbs
UR-40 Splice, Black	242-01214	\$7.50	20 EA	10 lbs
UR-40 End Cap	232-02452	\$0.70	20 EA	0.24 lbs
UR-60 Splice, Silver	242-01270	\$8.25	20 EA	14 lbs
UR-60 Splice, Black	242-01271	\$8.50	20 EA	14 lbs
UR-60 End Cap	232-02484	\$0.70	20 EA	0.3 lbs

* QTY (Quantity) listed is the standard package and minimum order quantity. SnapRack products are sold through distribution and may be available as individual units.

Comp Shingle Roof Attachments



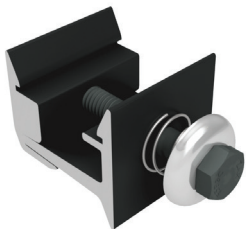
Comp Flashing



Ultra Rail Umbrella L Foot



Umbrella Lag



Ultra Rail Mounting Hardware, Black



L Foot Extension Kit

Description	SKU	MSRP	QTY*	WT
Ultra Rail Umbrella L Foot, Silver	242-01219	\$6.00	20 EA	7.4 lbs
Ultra Rail Umbrella L Foot, Black	242-01220	\$6.70	20 EA	7.4 lbs
Ultra Rail Mounting Hardware, Silver	242-01229	\$2.56	20 EA	22 lbs
Ultra Rail Mounting Hardware, Black	242-01230	\$2.86	20 EA	22 lbs
Ultra Rail All Purpose L Foot (90°), Black	242-01239	\$7.38	20 EA	9 lbs
Ultra Rail All Purpose L Foot (90°), Silver	242-01223	\$6.68	20 EA	9 lbs
Comp Flashing, 9" x 12", Black Alum (requires Umbrella Lag)	232-01375	\$5.25	20 EA	6.5 lbs
Comp Flashing, 9" x 12", Silver Alum (requires Umbrella Lag)	232-01376	\$4.35	20 EA	6.5 lbs
Comp Flashing, 9" X 12", Black Galvalume (requires Umbrella Lag)	232-01377	\$4.50	20 EA	11 lbs
L Foot Extension Kit	242-01120	\$1.75	20 EA	3.8 lbs
Umbrella Lag, 4"	242-92266	\$1.55	20 EA	2.4 lbs

Tile Roof Hooks



Ultra Rail Tile Roof Hook F



Ultra Rail Tile Roof Hook WS

Description	SKU	MSRP	QTY*	WT
Ultra Rail Tile Roof Hook F	242-01247	\$9.85	20 EA	21 lbs
Ultra Rail Tile Roof Hook WS	242-01248	\$12.88	20 EA	34 lbs



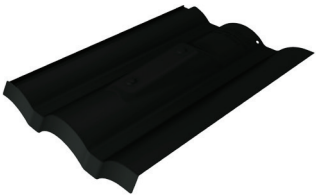
Ultra Rail Tile Roof Hook F is for application on flat tile roofs only. Ultra Rail Tile Roof Hook WS is for application on both W & S Shaped tile roofs.

Ultra Rail Flat Tile Hook includes Ultra Rail Mounting Hardware.

Tile Hook Replacement Flashing



Tile Hook Replacement Flashing, S



Tile Hook Replacement Flashing, W

Description	SKU	MSRP	QTY*	WT
Tile Hook Replacement Flashing, Flat	232-60055	\$10.41	20 EA	16 lbs
Tile Hook Replacement Flashing, S	232-60056	\$10.41	20 EA	18 lbs
Tile Hook Replacement Flashing, W	232-60057	\$10.41	20 EA	18 lbs

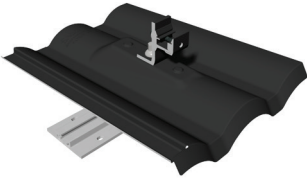


Ultra Rail Tile Hook Replacement Flashings are for Tile Hook installations when necessary to replace broken tiles.

* QTY (Quantity) listed is the standard package and minimum order quantity. SnapRack products are sold through distribution and may be available as individual units.

SnapRack Ultra Rail

Tile Replacement Kits



Ultra Rail W Tile Replacement with W Tile Hardware Kit

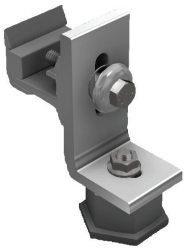
Description	SKU	MSRP	QTY*	WT
Flat Tile Replacement	232-01190_BK	\$10.41	10 EA	8.2 lbs
W Tile Replacement	232-01191_BK	\$10.41	10 EA	9.1 lbs
S Tile Replacement	232-01192_BK	\$10.41	10 EA	8.8 lbs
Ultra Rail Flat Tile Hardware Kit	242-01250	\$17.68	10 Kits	17.7 lbs
Ultra Rail W Tile Hardware Kit	242-01251	\$17.68	10 Kits	18.2 lbs
Ultra Rail S Tile Hardware Kit	242-01252	\$17.68	10 Kits	18.1 lbs
L Foot Extension Kit	242-01120	\$1.75	10 EA	3.8 lbs



Ultra Rail Umbrella L Foot includes Ultra Rail Mounting Hardware.

Ultra Rail Tile Replacements require matching Tile Replacement Hardware Kit. Ultra Rail Tile Replacements do not include mounting hardware kits. Ultra Rail Tile Hardware Kits include Base, Riser, Umbrella L Foot, and Umbrella Nut.

Metal Roof Attachments



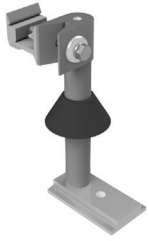
Ultra Rail Metal Roof Base w/ L Foot



Ultra Rail Standard Base Seam Clamp w/ L Foot & Lock

Description	SKU	MSRP	QTY*	WT
Ultra Rail Metal Roof Base w/ L Foot	242-02158	\$10.45	20 EA	11 lbs
Ultra Rail Standard Base Seam Clamp w/ L Foot & Lock	242-05158	\$12.50	20 EA	17 lbs
Ultra Rail Wide Base Seam Clamp w/ L Foot & Lock	242-05159	\$13.25	20 EA	11 lbs
Ultra Rail All Purpose L Foot (90°), Silver	242-01223	\$6.68	20 EA	9 lbs
Ultra Rail Hanger Bolt Clamp	242-01128	\$6.22	20 EA	8 lbs
Corrugated Straddle Block	232-02421	\$3.56	20 EA	6 lbs
Metal Roof Base	242-02036	\$5.70	20 EA	3.0 lbs
Standard Base Seam Clamp	242-05000	\$6.88	20 EA	8 lbs
Wide Base Seam Clamp	242-05001	\$7.83	20 EA	9 lbs

Standoff Mount Roof Attachments



Ultra Rail Flush Standoff, 7" w/ 1-Hole Base & Rain Collar
(All Sold Separately)

Description	SKU	MSRP	QTY*	WT
Ultra Rail Flush Standoff, 5½"	242-01257	\$9.07	20 EA	15 lbs
Ultra Rail Flush Standoff, 7"	242-01258	\$9.75	20 EA	16 lbs
Ultra Rail Flush Standoff, 8½"	242-01259	\$10.32	20 EA	19 lbs
Standoff Base 1-Hole	242-00017	\$2.75	20 EA	6 lbs
4-Hole Base w/(2) ¼"x3" Lag Screws	242-02218	\$4.25	20 EA	11 lbs
Metal Roof Base	242-02036	\$5.70	20 EA	3.0 lbs
Ultra Rail HD Standoff Kit, 7" w/Base	242-01265	\$15.10	20 EA	25 lbs
Standoff Spacer, 1"	242-92081	\$1.66	20 EA	1.6 lbs



Standoff Mount Roof Attachments are sold separately and not in kits.
HD Standoff Mount Roof Attachments with base are sold as a kit.

Standoff Flashings & Accessories

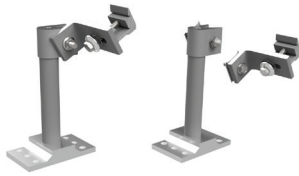


Rubber Rain Collar

Description	SKU	MSRP	QTY*	WT
Chem Link E-Curb, 4.5" x 3.5", Gray, Pourable (Pack of 4)	131-01357	\$147.00	1 Pack	28 lbs
Rubber Rain Collar	232-01000	\$1.18	20 EA	1 lb
Standoff Flashing, Straight Cone for HD Base, 18" X 18" X 4", Galv	131-01213	\$18.04	12 EA	17 lbs
Standoff Flashing, Verde 1.0STF, Skinny Cone for Tile, 20" x 20" x 3", Dead Soft Alum	175-05001	\$16.25	25 EA	25 lbs
Standoff Flashing, Offset Cone for 1-Hole Base, 18 ¾" x 15" x 4", Galv	131-01216	\$13.00	20 EA	17 lbs
Standoff Flashing, Oatey 11830, No Caulk Rubber Cone, 9" x 12½", Galv	015-00162	\$11.00	12 EA	8 lbs
Standoff Flashing, Verde 1.0SSO, Deck Level for 1-Hole Base, 10" x 12" x 1", Galv	175-05005	\$5.75	25 EA	17 lbs

* QTY (Quantity) listed is the standard package and minimum order quantity. SnapRack products are sold through distribution and may be available as individual units.

Tilt System Roof Attachments



Ultra Rail Variable Tilt Standoff Kit

Description	SKU	MSRP	QTY*	WT
Ultra Rail Tilt Standoff, 5½"	242-92106	\$11.95	20 EA	19 lbs
Ultra Rail Tilt Standoff, 10"	242-92107	\$13.80	20 EA	26 lbs
Ultra Rail Tilt Standoff, 14"	242-92108	\$16.45	20 EA	31 lbs
Ultra Rail Tilt Standoff, 23"	242-92109	\$19.95	20 EA	44 lbs
Ultra Rail Variable Tilt Hardware Kit for Metal Roof Attachments	242-92116	\$30.16	20 EA	27 lbs
Ultra Rail Variable Tilt Standoff Kit	242-92117	\$44.95	20 EA	62 lbs
Standoff Base 1-Hole	242-00017	\$2.75	20 EA	6 lbs
4-Hole Base w/(2) ¼"x3" Lag Screws	242-02218	\$4.25	20 EA	11 lbs
Metal Roof Base	242-02036	\$5.70	20 EA	3.0 lbs



Ultra Rail Tilt Standoffs include a Standoff Shaft and Ultra Rail Tilt Clamp (Standoff Clamp, L Foot, and Ultra Rail Mounting Hardware). Bases are to be ordered separately. Order 5½" Standoff for front leg and 10", 14", or 23" for rear leg to obtain desired tilt angle. **Please refer to Ultra Rail Tilt Angle Table (Nominal) below.**

Ultra Rail Variable Tilt Hardware Kit for Metal Roof Attachments includes L Feet, Ultra Rail Mounting Hardware, and miscellaneous hardware to complete kit for front and rear legs. Metal roof attachments (without L Foot) and section of Ultra Rail for rear leg are to be ordered separately.

Ultra Rail Variable Tilt Standoff Kit includes (2) 6-Hole Bases, (2) 7" HD standoffs, (2) Standoff Clamps and L Feet with Ultra Rail Mounting Hardware for both front and rear legs. Section of Ultra Rail for rear leg to be ordered separately.

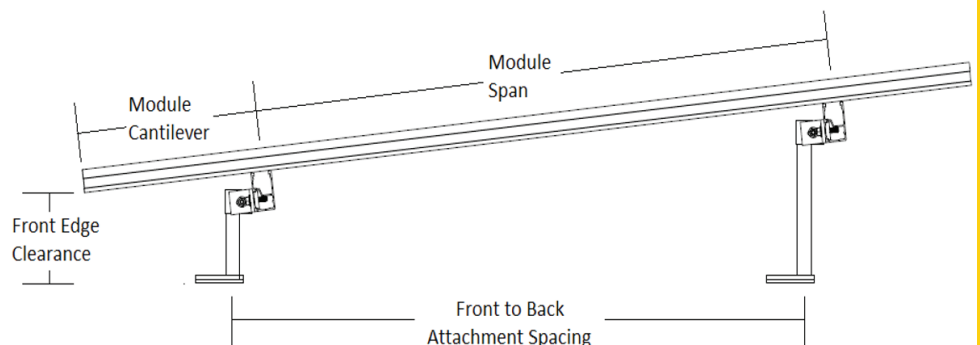
Please refer to Ultra Rail Tilt Angle Table (Nominal) below to obtain desired tilt angles for 5° - 30° Fixed Tilt Kit Standoffs with Ultra Rail Tilt Clamps.

Ultra Rail Tilt Angle Table (Nominal) 5° - 30° Fixed Tilt Kits - Standoffs with Ultra Rail Tilt Clamps

Front to back attachment spacing	Landscape			Portrait		
	5 ½" & 10" Standoffs	5 ½" & 14" Standoffs	5 ½" & 23" Standoffs	5 ½" & 10" Standoffs	5 ½" & 14" Standoffs	5 ½" & 23" Standoffs
16"	16°	28°	N/A	N/A	N/A	N/A
24"	10°	20°	N/A	N/A	N/A	N/A
32"	8°	15°	28°	8°	15°	28°
48"	N/A	N/A	N/A	5°	10°	20°

Notes:

1. Table is based on 60 cell modules
2. Table assumes mounting zone on portrait modules not exceeding 25% of module length
3. Maximum tilt angle allowed = 30° relative to horizontal
4. All tilt ups must have 5-1/2" Standoff in front



Simple Tilt Attachments



Ultra Rail Simple Tilt Back Leg 10° Portrait



Ultra Rail Simple Tilt Back Leg 10° Landscape



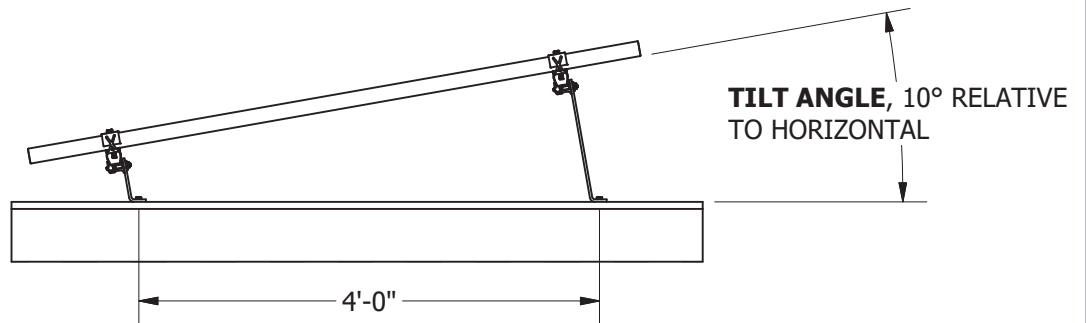
Ultra Rail Simple Tilt Front Leg 10°

Description	SKU	MSRP	QTY*	WT
Ultra Rail Simple Tilt Back Leg 10° Portrait	242-03215	\$12.00	20 EA	15 lbs
Ultra Rail Simple Tilt Back Leg 10° Landscape	242-03216	\$10.00	20 EA	12 lbs
Ultra Rail Simple Tilt Front Leg 10°	242-03217	\$8.00	20 EA	9 lbs



Simple Tilt requires 4ft spacing between mounts front to rear, and is only available as a 1-Hole Base.

Ideal for use with E-Curb, Simple Tilt Attachments are for application on flat roofs only.



* QTY (Quantity) listed is the standard package and minimum order quantity. SnapRack products are sold through distribution and may be available as individual units.

SnapRack Module Attachments

SnapRack Module Attachments - Ultra Rail - S200

Module Clamps are available in different sizes to match PV module frame thickness/depth. **Universal End Clamps** are a unique one-size-fits-all time saver that slips inside the module frame – completely out of sight. The rails are cut flush with the modules and finished with SnapRack End Caps to create a system with a flush, clean line homeowners love. All Module Clamps work with Ultra Rail and Series 200 Ground Mount.

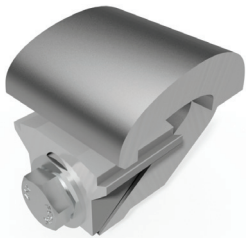
Mid Clamps



Bonding Mid Clamp,
Black

Description	SKU	MSRP	QTY*	WT
Bonding Mid Clamp, 30-38mm (1.18-1.49"), Black	242-02053	\$4.03	20 EA	3.0 lbs
Bonding Mid Clamp, 30-38mm (1.18-1.49"), Silver	242-02050	\$3.56	20 EA	3.0 lbs
Bonding Mid Clamp, 33-45mm (1.30-1.77"), Black	242-02054	\$4.03	20 EA	3.2 lbs
Bonding Mid Clamp, 33-45mm (1.30-1.77"), Silver	242-02051	\$3.56	20 EA	3.2 lbs
Bonding Mid Clamp, 38-51mm (1.49-2.00"), Black	242-02055	\$4.03	20 EA	3.3 lbs
Bonding Mid Clamp, 38-51mm (1.49-2.00"), Silver	242-02052	\$3.56	20 EA	3.3 lbs
Bonding Mid Clamp, 49-57mm (1.93-2.24"), Black	242-02057	\$4.03	20 EA	3.4 lbs
Bonding Mid Clamp, 49-57mm (1.93-2.24"), Silver	242-02056	\$3.56	20 EA	3.4 lbs

End Clamps



Universal End Clamp



Bonding Adjustable
End Clamp, Black

Description	SKU	MSRP	QTY*	WT
Universal End Clamp	242-02215	\$5.46	20 EA	6 lbs
Bonding Adjustable End Clamp, 30-38mm (1.18-1.49"), Black	242-02067	\$7.12	20 EA	3.6 lbs
Bonding Adjustable End Clamp, 30-38mm (1.18-1.49"), Silver	242-02065	\$6.41	20 EA	3.6 lbs
Bonding Adjustable End Clamp, 38-51mm (1.49-2.00"), Black	242-02068	\$7.12	20 EA	3.6 lbs
Bonding Adjustable End Clamp, 38-51mm (1.49-2.00"), Silver	242-02066	\$6.41	20 EA	3.6 lbs

SnapNrack Accessories

SnapNrack Accessories - Ultra Rail - S200

SnapNrack offers the largest set of mounting accessories to enhance the install process. SnapNrack **Wire Management Solutions** comprise a set of dedicated components to reliably and cost-effectively secure PV module and microinverter leads. All components are made of materials which have been selected for their ability to handle high UV exposure and extreme rooftop temperatures common under solar arrays.

Wire & Electronics Management



Junction Box XL



Universal Wire Clamp



Wire Retention Clip

Description	SKU	MSRP	QTY*	WT
Junction Box R for Rail	242-01104	\$28.50	1 EA	1.2 lbs
Junction Box XL for Rail	242-92120	\$44.95	1 EA	2.2 lbs
Junction Box S with Comp Kit	242-01113	\$34.87	1 EA	2.2 lbs
Junction Box XL with Comp Kit	242-92121	\$49.95	1 Kit	4.7 lbs
Universal Wire Clamp for Rail	242-02150	\$3.56	20 EA	3.2 lbs
Universal Wire Clamp for J Box	242-09025	\$3.87	1 EA	0.20 lbs
Engage Cable Clamp for Rail	242-02103	\$3.56	20 EA	2.7 lbs
Snap-in Wire Retention Clip	232-01106	\$0.47	20 EA	0.02 lbs
Smart Clip II	232-01173	\$0.40	100 EA	1.0 lbs
Smart Clip XL	232-01176	\$0.55	100 EA	1.0 lbs
MLPE Rail Attachment Kit	242-92093	\$2.26	20 Kits	3.2 lbs
MLPE Frame Attachment Kit	242-02151	\$4.25	20 EA	2.7 lbs



MLPE Rail Attachment Kit includes over-sized Fender Washer, Channel Nut and serrated Flange Bolt.

Grounding

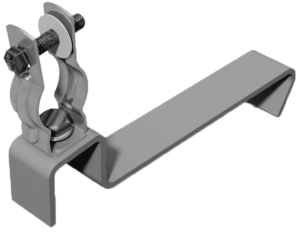


Ground Lug R,
6-12 AWG

Description	SKU	MSRP	QTY*	WT
Ground Lug R, 6-12 AWG	242-02101	\$4.75	20 EA	5 lbs
Lay-in Lug w/ Bolt and Keps Lock Nut, 4-14 AWG (Pack of 10)	051-03418	\$45.00	1 Pack	0.72 lbs

* QTY (Quantity) listed is the standard package and minimum order quantity. SnapNrack products are sold through distribution and may be available as individual units.

Conduit Supports



Conduit Support - Tile

Description	SKU	MSRP	QTY*	WT
Conduit Support for Tile, 3/4" EMT	242-02104	\$5.70	20 EA	1.5 lbs
Conduit Support Kit for Comp, 3/4" EMT	242-02106	\$10.45	20 Kits	22 lbs
Conduit Support for Tile, 1" EMT	242-02108	\$6.21	20 EA	1.5 lbs
Conduit Support Kit for Comp, 1" EMT	242-02109	\$10.96	20 Kits	22 lbs



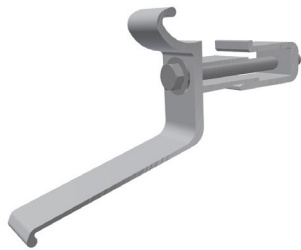
Conduit Support - Comp

Array Skirt

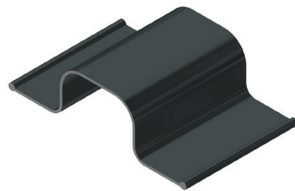


Skirt, 162"

Description	SKU	MSRP	QTY*	WT
Skirt Set, 162" (Box of 6)	015-11787	\$506.35	1 Box	61 lbs
Skirt, 162" (Bundle of 60, priced as each)	232-01259	\$78.13	60 EA	550 lbs
Skirt Frame Mount	242-92211	\$4.75	20 EA	4.6 lbs
Skirt Splice	232-01251	\$2.37	20 EA	2.6 lbs
Skirt End Cap Pair	232-01250	\$2.13	20 EA	1.0 lbs



Skirt Frame Mount



Skirt Splice



Skirt End Cap Pair

Array Edge Screen

Description	SKU	MSRP	QTY*	WT
Array Edge Screen Kit, 4" x 100', 40 Clips	015-11176	\$152.00	1 Kit	14 lbs
Array Edge Screen Kit, 8" x 100', 40 Clips	015-11177	\$242.25	1 Kit	27 lbs
Array Edge Screen Clip, 4"	232-03993	\$2.13	20 EA	2.0 lbs
Array Edge Screen Clip, 8"	232-03994	\$2.61	20 EA	4.0 lbs
Add-A-Lip Box Frame Adapter, Black	242-01101	\$6.41	20 EA	6 lbs



Array Edge Screen Kits include 100 ft. of Array Edge Screen and 40 Array Edge Screen Clips.

Add-A-Lip Box Frame Adapter is for use with module frames that do not have a bottom lip for attaching the Array Edge Screen Clip.

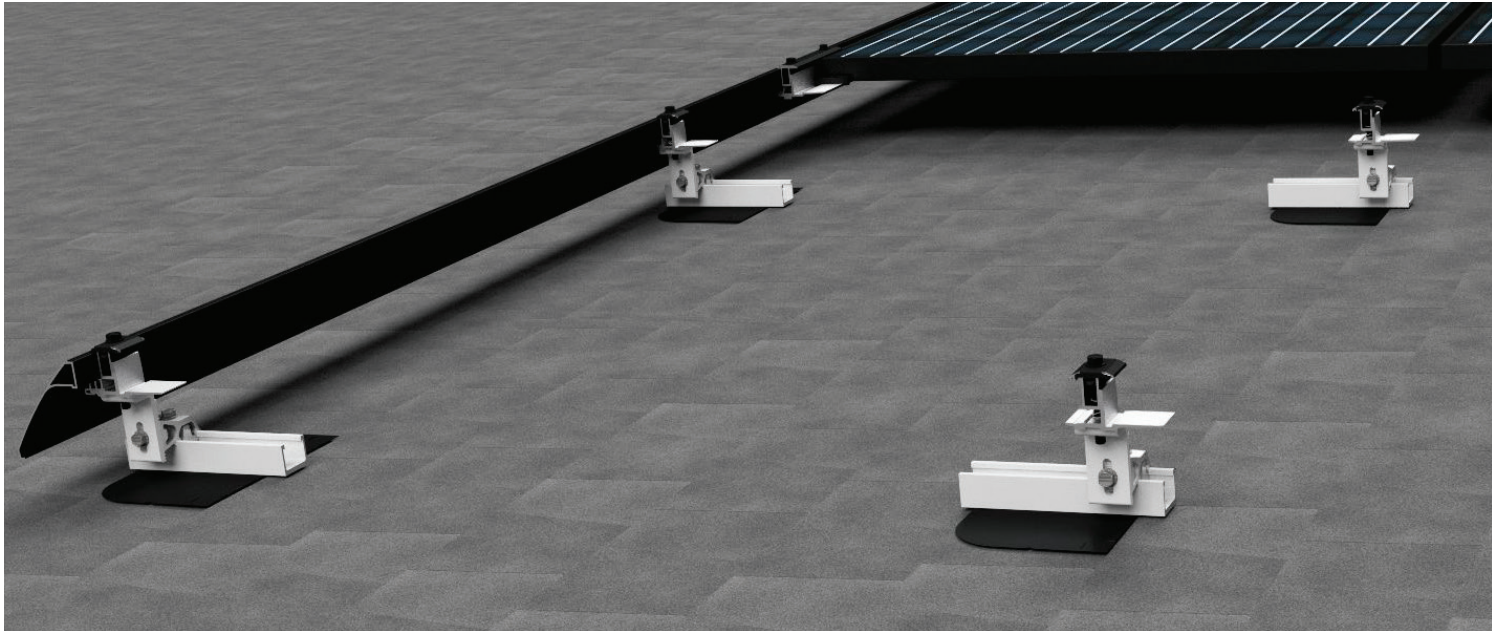
Deck Level Flashing for Tile

Description	SKU	MSRP	QTY*	WT
PS45 Deck Level Flashing Set, (1) 9x9 & (1) 4X13	242-02723	\$3.98	20 Sets	8 lbs
PS45 Deck Level Flashing Set, (1) 5X13 & (1) 4X17	242-02728	\$3.98	20 Sets	8 lbs
Protecto-Tak Spray Adhesive	131-01347	\$29.99	20 EA	22 lbs

Misc

Description	SKU	MSRP	QTY*	WT
Original Channel Nut	232-02005	\$0.71	20 EA	0.90 lbs
UEC Rail Cutting Tool	232-02284	\$14.25	20 EA	12 lbs
Rail Cover, 48"	232-01033	\$9.59	20 EA	14 lbs

* QTY (Quantity) listed is the standard package and minimum order quantity. SnapRack products are sold through distribution and may be available as individual units.



SnapNrack RL Universal **The Fastest Mounting System. Period**

SnapNrack RL Universal Mounting System is designed to provide the fastest, most intuitive install experience on the roof. The direct mount system features four basic components for easy material management. Features incredible flexibility with a single Universal Mount that fits module heights from 32 - 40 mm and the highest spans of any current rail less system. The installer focused process allows the system to be installed by a single person.

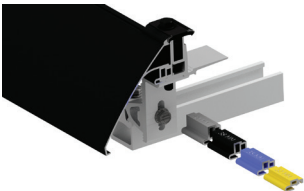
- The RL Universal Skirt ensures a strong structure for leveling and alignment of first row of modules.
- A single Umbrella Lag screw secures flashing and Flash Track to roof in one complete action. The Flash Track is designed for maximum versatility with 6 inches of North-South adjustability for all Mounts.
- A single Mount is used at all locations on array and is an extreme time saver by eliminating link interference through the flexibility of the Mount to change orientation.
- The Links clamp onto the top of modules securing them in place while providing row-to-row bonding.



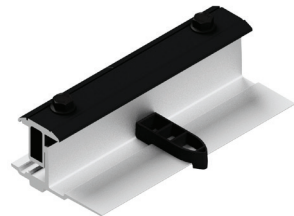
RL-U Components



RL-U Mount Kit
with Flashing



RL-U Skirt with Mount
& Spacers Assembly
(Sold Separately)



RL Universal Link

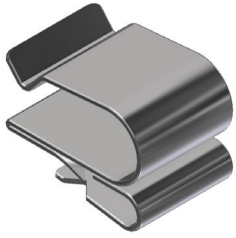


RL Universal
Ridge Mount

Description	SKU	MSRP	QTY*	WT
RL Universal Landscape Skirt, Black (Bundle of 72, priced as each)	232-02492	\$37.90	72 EA	284 lbs
RL Universal Double Portrait Skirt, Black (Bundle of 72, priced as each)	232-02493	\$45.60	72 EA	341 lbs
RL Universal Skirt Spacer, 32mm	232-02494	\$0.65	20 EA	1 lbs
RL Universal Skirt Spacer, 35mm	232-02495	\$0.65	20 EA	1 lbs
RL Universal Skirt Spacer, 38mm	232-02496	\$0.65	20 EA	1 lbs
RL Universal Skirt Spacer, 40mm	232-02497	\$0.65	20 EA	1 lbs
Comp Flashing, 9" x 12", Black Alum (requires Umbrella Lag)	232-01375	\$5.25	20 EA	6.5 lbs
Comp Flashing, 9" x 12", Silver Alum (requires Umbrella Lag)	232-01376	\$4.35	20 EA	6.5 lbs
Comp Flashing, 9" X 12", Black Galvalume (requires Umbrella Lag)	232-01377	\$4.50	20 EA	11 lbs
Umbrella Lag, 4"	242-92266	\$1.55	20 EA	2.4 lbs
RL Universal Mount Kit	242-92285	\$15.00	20 EA	22 lbs
RL Universal Link	242-02156	\$11.00	20 EA	21 lbs
RL Universal Ridge Mount	242-02157	\$19.00	10 EA	24 lbs

* QTY (Quantity) listed is the standard package and minimum order quantity. SnapRack products are sold through distribution and may be available as individual units.

RL-U Wire Management & Accessories



Smart Clip II



Smart Clip XL



Wire Saver



Flash Track Universal Wire Clamp

Description	SKU	MSRP	QTY*	WT
Smart Clip II	232-01173	\$0.40	100 EA	1.0 lbs
Smart Clip XL	232-01176	\$0.55	100 EA	1.0 lbs
Wire Saver	242-92262	\$2.69	20 EA	0.42 lbs
Junction Box S with Comp Kit	242-01113	\$34.87	1 Kit	2.2 lbs
Junction Box XL with Comp Kit	242-92121	\$49.95	1 Kit	4.7 lbs
Universal Wire Clamp for J Box	242-09025	\$3.87	1 EA	0.20 lbs
Ground Lug RL	242-92202	\$5.15	20 EA	2.0 lbs
MLPE Frame Attachment Kit	242-02151	\$4.25	20 EA	2.7 lbs
Flash Track Universal Wire Clamp	242-92641	\$6.13	20 EA	7 lbs
RL Flash Track Leveling Spacer	242-92254	\$8.98	20 EA	5 lbs

* QTY (Quantity) listed is the standard package and minimum order quantity. SnapRack products are sold through distribution and may be available as individual units.

SnapRack Series 200



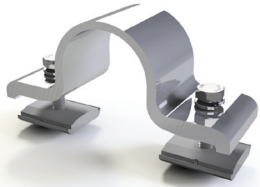
SnapRack Series 200 **The Adaptable High Quality Solution for** **Ground Mount Installations**

The Series 200 Ground Mount System is designed to attach easily to a standard 1 ½” galvanized pipe structure using structural pipe fittings. Using a standard three to four-module high assembly, the system is efficient and flexible while optimizing materials and minimizing system footprint. Industry leading installation times are achieved with unique snap-in fasteners.

- Assembles easily using snap-in bonding pipe clamps that connect the rails
- Fully compatible with all SnapRack module clamps and accessories
- Ground rail channel keeps wires neatly organized providing a clean finished look to every install
- Industry’s largest offering of Wire Management accessories include snap-in Junction Boxes, Universal Wire Clamps, as well as ground rail channel to keep wires neatly organized
- Maximum versatility with the ability to configure easily to desired tilt between 0 and 45 degrees
- Using pipe structural fittings, labor hours to install the system are typically less than required for a more complicated racking system not using standardized components

SnapRack Series 200

Structural Fittings



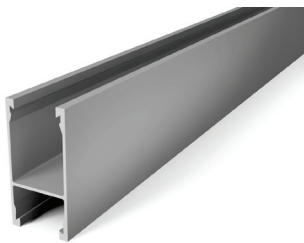
Bonding Pipe Clamp



Double Adjustable Socket Tee, Hollaender

Description	SKU	MSRP	QTY*	WT
Bonding Pipe Clamp for 1 1/2" Pipe	242-09004	\$6.65	20 EA	9 lbs
Single Socket Tee, Hollaender (5E-8), 1 1/2", AL-MG	172-05800	\$12.50	1 EA	0.55 lbs
Single Adjustable Socket Tee, Hollaender (17-8), 1 1/2", AL-MG	172-05803	\$18.75	1 EA	1.1 lbs
Double Adjustable Socket Tee, Hollaender (19E-8), 1 1/2", AL-MG	172-05804	\$24.00	1 EA	0.85 lbs
Rectangular Base Flange, Hollaender (46-8), 1 1/2", AL-MG	172-05807	\$18.50	1 EA	0.55 lbs
Plug End, Hollaender (62-8), 1 1/2" Sched 40, AL	172-05808	\$5.00	1 EA	0.16 lbs

Series 200 Rail



Ground Rail

Description	SKU	MSRP	QTY*	WT
Ground Rail Set, 162", Silver (Box of 2)	015-09819	\$191.90	1 Box	29 lbs
Ground Rail Set, 162", Silver (Box of 4)	015-09855	\$342.00	1 Box	49 lbs
Ground Rail, 162", Silver (Bundle of 112, priced as each)	232-01072	\$79.32	112 EA	1,790 lbs
Ground Rail End Cap	232-01043	\$2.61	20 EA	1.6 lbs

* QTY (Quantity) listed is the standard package and minimum order quantity. SnapRack products are sold through distribution and may be available as individual units.

Quality. Innovative. Superior.

SnapNrack Solar Mounting Solutions are engineered to optimize material use and labor resources and improve overall installation quality and safety.

Warranty

All SnapNrack products are covered by a **25-year limited warranty**. For complete details please visit www.snapnrack.com/resources.

MSRP

Prices published in this document are Manufacturer Suggested Retail Prices (MSRP) and should be used for reference only. Prices are subject to change without notice. The quantity (QTY) and weight (WT) shown are based on the standard package and order quantity.

Contact your SnapNrack distributor, which can be found at www.SnapNrack.com/where-to-buy, contact us directly at contact@SnapNrack.com, or call us **Toll Free at (877) 732-2860** for technical support.

SnapNrack distributors have trained knowledgeable staff that can provide product design and ordering assistance.

