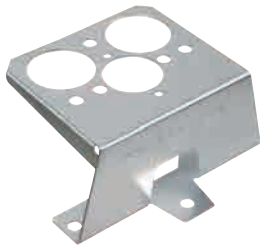




Steel Stand-Off Bracket

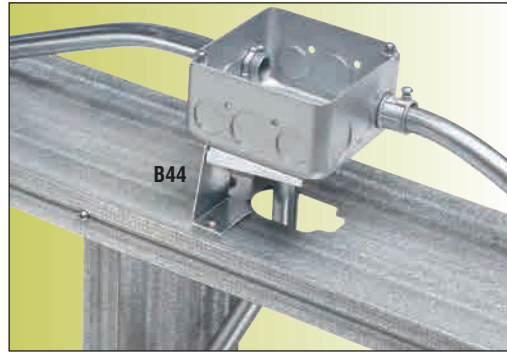
New!

20 gauge steel stand-off bracket provides rigid support and spacing for a 4x4 metal box installed with all types of raceway systems. Complies with 2008 NEC – Overcomes code violations. Provides box support independent of conduit.

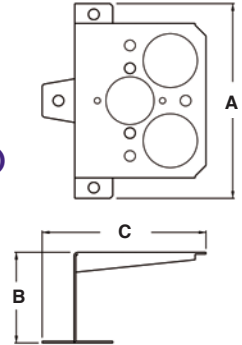


CATALOG NUMBER	UPC/DCI/NAED MFG #01 8997	DESCRIPTION	UNIT PKG	STD PKG	DIM A	DIM B	DIM C
B44	00101	20 Gauge Steel	25	25	4.500	2.100	3.770

PATENT PENDING.



B44 overcomes violations of 2008 NEC 300.11 (A) and 314.23 (A and B)

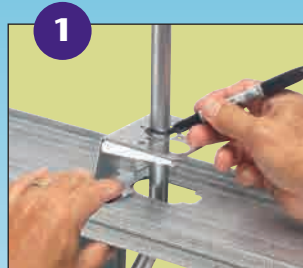


Features and Benefits

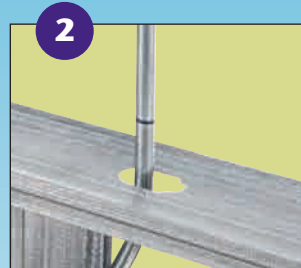
- Bracket has oversized clearance holes that assure proper bonding between the fitting and the box
- Easy-to-install and provides secure fastening and rigid box support
- Mounts to metal, wood, block, or brick with a variety of fasteners
- Pre-drilled holes line up with holes in 4x4 metal box
- For use with all types of raceway systems
- **B44** overcomes violations of 2008 NEC 300.11 (A) and 314.23 (A and B)

Installation Instructions

For a video installation demonstration visit our website @ aifittings.com



Place **B44** on metal stud and mark EMT.



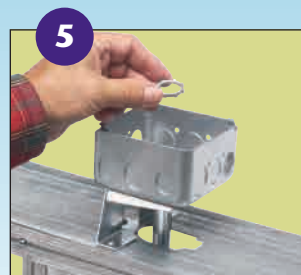
EMT marked and ready to cut.



Attach **B44** stand-off bracket to metal stud through holes in base.



EMT "floats" in clearance hole to assure proper bonding between box and fitting.



Install locknut on EMT fitting.



Attach 4x4 metal box to the stand-off bracket with screws (not provided) through pre-drilled holes in bracket.



Completed installation. The box is supported by the B44 stand-off bracket, not the conduit!

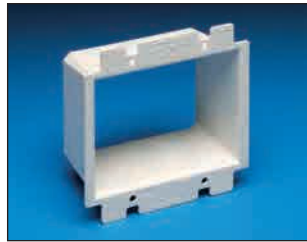


Box Extenders

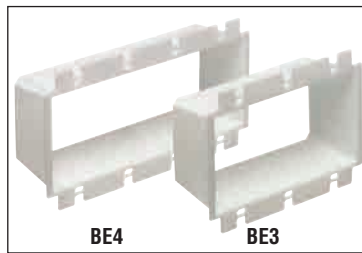
Levels and supports the wiring device where the box is set back from the wall surface. Extends the box up to 1-1/2".



BE1



BE2



BE4

BE3

**HEAVY-DUTY
PLASTIC, UL LISTED!**

CATALOG NUMBER	UPC/DCI/NAED MFG #01 8997	UNIT PKG	STD PKG	DIM A	DIM B	DIM C
BE1	40160	25	250	2.313	4.188	1.813
BE1BAG	51905	1	100	2.313	4.188	1.813
BE2	48960	25	25	4.100	4.188	1.813
BE3	48967	10	10	5.937	4.188	1.813
BE4	48968	10	10	7.749	4.188	1.813

BE1BAG includes two #6 x 2" long screws.
PATENTED. ADDITIONAL PATENTS PENDING.

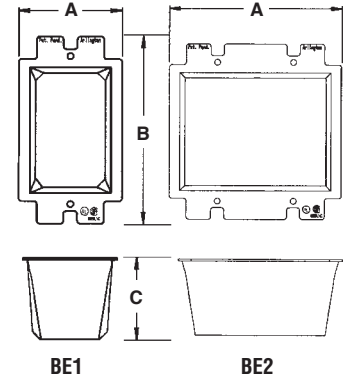


E170558 LR49636

Two Hour Fire Rating

Features and Benefits

- Allows the contractor to comply with 2008 NEC Article 314.20
- Levels and supports the wiring device where the box is set back from the wall surface (adjusts up to a 1-1/2" box extension)
- Works in handy boxes and 4" square electrical boxes with plaster rings for single switches or receptacle
- Functions with all standard devices, switches, and GFCIs
- Manufactured from 105°C continuous use 94V0 rated flame retardant plastic for safer installations



BE1 Installation Instructions

To install without removing device wires, tilt the device through the BE1 at a slight angle, straighten it and tighten the screws!

Problem...

Electrical box set back from wall surface.



SOLUTION...



1 Pull wires through, then press the BE1 firmly into the electrical box.



2 Attach wires to receptacle. Then tighten screws for a level, fully supported, code compliant installation.



Slip Meter Riser Fitting

Designed to create an expansion joint in the installation of an electrical service entrance.



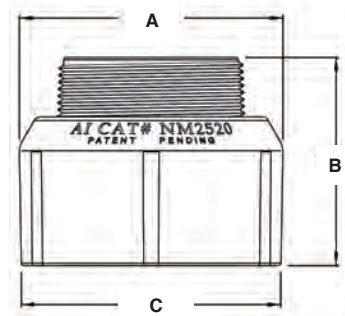
New!

CATALOG NUMBER	UPC/DCI/NAED MFG #01 8997	DESCRIPTION/STYLE	UNIT PKG	STD PKG	DIM A	DIM B	DIM C
NM2520	54565	2" K.O. size	10	10	3.329	2.625	3.276

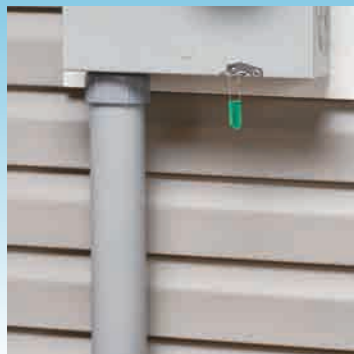


Features and Benefits

- Fast, easy underground service installations
- Protects cable from freeze/thaw flexion and ground movement
- Meets 2008 NEC 300.7(B) and 300.5(J)



Installation Instructions



Glue NM2520 onto 2-1/2" PVC conduit. Slip 2-1/2" conduit over 2" non-metallic conduit coming from the ground (PVC conduit not supplied).



Attach the NM2520 to the bottom of the meter enclosure. 2 to 2-1/2" meter riser fitting holds conduit firmly in place (locknut is not supplied).

Fixture Hanger

For hanging static load items requiring drop wire support.



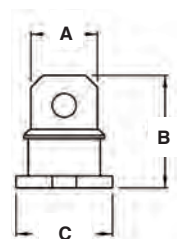
New!

CATALOG NUMBER	UPC/DCI/NAED MFG #01 8997	DESCRIPTION/STYLE	UNIT PKG	STD PKG	DIM A	DIM B	DIM C
FH50	06881	Fixture Hanger for hanging fixtures, etc up to 50 lbs	50	50	.688	1.166	1.000

PATENT PENDING.

Features and Benefits

- Supports up to 50 lbs
- Low profile base
- No tools needed
- Snaps into knockout





Non-Metallic Box Extender

Install over a shallow box and allows you to install larger devices: Adds 5/8"



New!

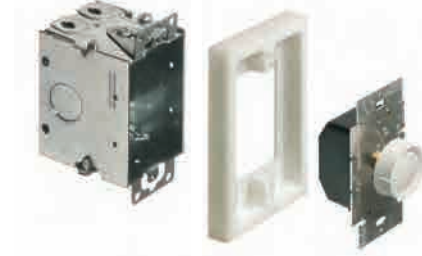
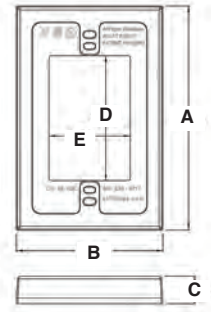
CATALOG NUMBER	UPC/DCI/NAED MFG #01 8997	DESCRIPTION/STYLE	UNIT PKG	STD PKG	DIM A	DIM B	DIM C	DIM D	DIM E
BES1	48976	Single Gang / White	1	10	5.117	3.336	.625	2.850	1.850

Each unit pack includes two installation screws
PATENT PENDING.



Features and Benefits

- Adds 5.3 cubic inches to existing box volume
- No need to remove existing shallow box
- Allows you to install larger devices such as GFCI's in shallow boxes
- Finishes with any standard or mid-size wall plate
- Paintable



Non-Metallic Box Extender

Install over a shallow box and allows you to install larger devices: Adds 5/8"



New!

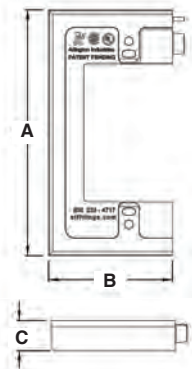
CATALOG NUMBER	UPC/DCI/NAED MFG #01 8997	DESCRIPTION/STYLE	UNIT PKG	STD PKG	DIM A	DIM B	DIM C
BES2	48977	White End Connector	1	10	5.117	2.574	.625
BES2C	48979	White Coupler Connector	1	25	1.127	1.812	.525

Each unit pack includes four installation screws
PATENT PENDING.



Features and Benefits

- BES2 adds 10.5 cubic inches to existing box volume
- BES2C pair adds an additional gang and 3.5 cubic inches
- No need to remove existing shallow box
- Allows you to install larger devices such as GFCI's in shallow boxes
- Finishes with any standard or mid-size wall plate
- Paintable





Wire Grabber™ Kit

New!

When hanging fixture boxes, fixtures, cable tray and other static load items requiring drop wire support.

CATALOG NUMBER	UPC/DCI/NAED MFG #01 8997	DESCRIPTION/STYLE	UNIT PKG	STD PKG	DIM A	DIM B	DIM C
DW50	06880	Fixture Support for fixtures, etc up to 50 lbs	10	10	.562	.687	1.250

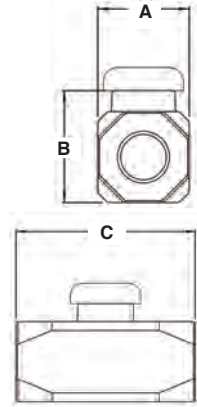
PATENT PENDING.



E161207

Features and Benefits

- Includes 12 ft of drop wire and two “Wire Grabber™”
- Costs less than other similar products
- 50 lb weight rating
- Tighten “Wire Grabber™” with Philips screwdriver
- Faster installation for Industrial and Commercial applications (Electrical) fixtures, cable tray and bus bar (HVAC), rectangular, oval or spiral ducting.



Drive Rings

New!

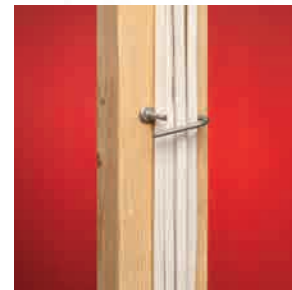
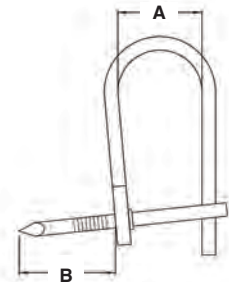
Made of corrosion-resistant galvanized steel, this series of drive rings provides sturdy support for wire and cable.

CATALOG NUMBER	UPC/DCI/NAED MFG #01 8997	DESCRIPTION/STYLE	UNIT PKG	STD PKG	DIM A	DIM B
DR1	01551	1/2" DRIVE RING	100	1000	1/2"	1-1/4"
DR2	01552	5/8" DRIVE RING	50	500	5/8"	1-3/8"
DR3	01553	7/8" DRIVE RING	50	500	7/8"	1-3/8"
DR4	01554	1 1/4" DRIVE RING	25	250	1-1/4"	1-7/8"

PATENT PENDING.

Features and Benefits

- Can be used on outside walls, inside walls, wood studs and utility poles
- Quick and easy to install, fastens to surface by using a hammer
- Loop is open making it easy to insert or remove cable.
- Size is measurement between loops.





Ceiling Box Extender

For set back ceiling boxes. Fits 3-1/2" and 4" round or octagonal boxes.



CATALOG NUMBER	UPC/DCI/NAED MFG #01 8997	UNIT PKG	STD PKG	DIM A	DIM B	DIM C
BE1R	40161	25	25	4.850	4.350	1.500

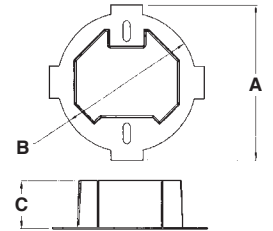
PATENTED.



E170558 LR49636

Features and Benefits

- Complies with 2008 NEC Article 314.20
- Extends box up to 1-1/2" to bring it level with ceiling surface
- Trims to accommodate shallow boxes or to avoid obstructions
- Manufactured from 105°C continuous use 94V0 rated flame retardant plastic for safer installations



**HEAVY-DUTY
PLASTIC, UL LISTED!**

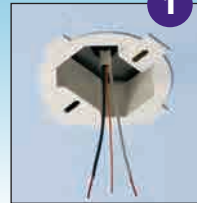
Installation Instructions

Problem...



Ceiling box is set back from surface.

SOLUTION...



Non-conductive BE1R Box Extender installs easily and extends box flush with ceiling surface.



Proceed with fixture installation. Flexible, plastic BE1R protects against wire damage.



Fixture is installed and a level, code compliant installation is complete!

FIXTURE BAR FIRMLY SUPPORTED for EASIER CANOPY INSTALLATION!

Box Covers

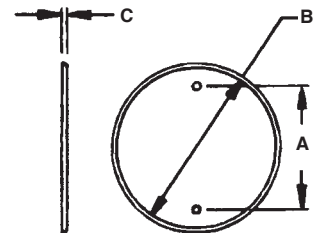
Covers 4" round or octagonal boxes. Non-metallic. Will not rust.



CATALOG NUMBER	UPC/DCI/NAED MFG #01 8997	BOX SIZE	UNIT PKG	STD PKG	DIM A	DIM B	DIM C
CP40	15040	4"	1	40	3.500	4.750	.150

Features and Benefits

- Paintable to blend with any wall or ceiling
- Comes complete with white painted screws to blend with cover
- Reusable and flexible
- Will not rust or discolor





Ceiling Box Cover

Covers unused 3-1/2" and 4" round and octagonal boxes prior to the installation of a fan or fixture. Non-rusting, paintable plastic.



CATALOG NUMBER	UPC/DCI/NAED MFG #01 8997	BOX SIZE	UNIT PKG	STD PKG	DIM A	DIM B	DIM C
CP3540	54090	3-1/2 & 4"	1/Bag	50 Bags	.437	5.390	.812

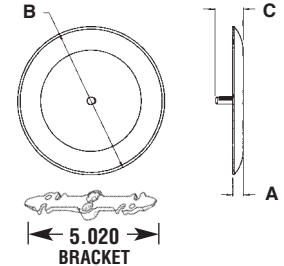
Two #8-32 x 3/4" flat head screws and bracket are included.
PATENTED.



E170558 LR49636

Improved Features

- Deeper cover works with *pan* boxes without the need to cut the post
- Use #8 screws provided or back out existing screws to accept notched bracket
- Bracket has two separate cover mounting options. Threaded post pushes in, for flat ceilings, or screws on for textured/uneven ceilings.



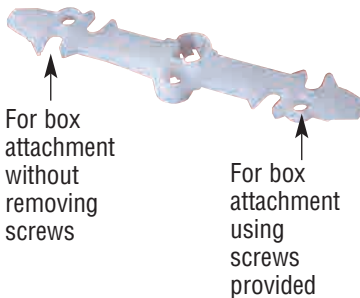
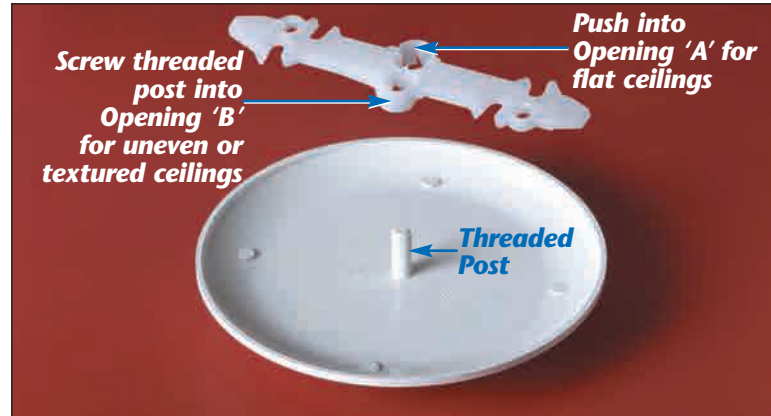
Benefits

- Attractive cover. Screws don't show on the ceiling
- Plastic eliminates the scratches you get with painted metal covers
- Covers poorly cut drywall

For Flat and Uneven Ceilings...



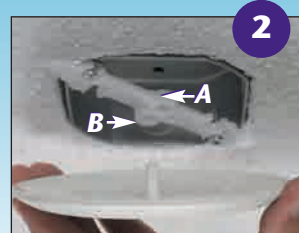
Mounting screws are invisible on the ceiling



Installation Instructions



1 Back the screws out enough to slip the bracket on.



2 Use the opening in the bracket most suitable for your ceiling condition...
'A' for flat ceilings, push post into opening to seat cover;
'B' for uneven or textured ceilings, screw threaded post into opening until tight.



Non-Metallic Bushings for Metal Studs

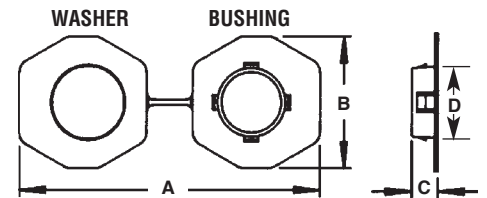


FITS A STANDARD 1" KNOCKOUT

CATALOG NUMBER	UPC/DCI/NAED MFG #01 8997	STUD SIZE	STD PKG	DIM A	DIM B	DIM C	DIM D
SB13	40115	2 x 4	500	5.670	2.500	.505	1.300
SB130	40130	2 x 4	100	5.670	2.500	.505	1.300

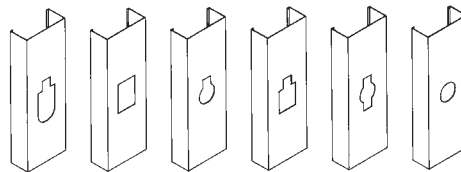
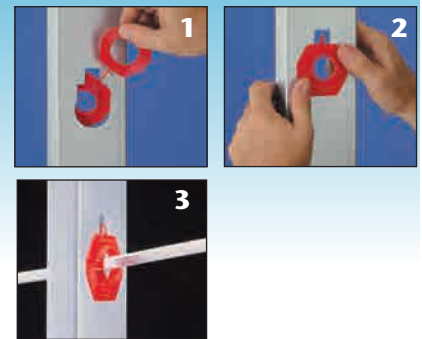
These bushings fit existing irregular shaped holes in metal studs, alleviating the need to punch holes in metal studs, weakening the structural member. Use these bushings to comply with paragraph 300-4(b)(1) of the 2008 NEC code which states that: "In both exposed and concealed locations where nonmetallic-sheathed cables pass through either factory or field punched, cut, or drilled slots or holes in metal members, the cable shall be protected by bushings or grommets covering all metal edges and securely fastened in the opening prior to installation of the cable."

PATENTED.

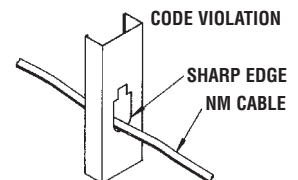


Installation Instructions

To install these bushings in an irregular shaped hole, pass one end of the joined connector through the hole in the stud. Snap the bushing and the washer ends together. There's no need to separate the two halves. If a punched hole is required, the SB13 can be installed in a standard 1" trade size, round punched hole (1-3/8" diameter). Snap the bushing end into the hole.



Common hole configurations in metal studs.



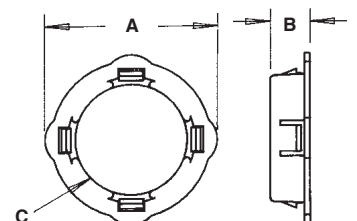
Non-Metallic Bushings for Metal Studs



SB3

CATALOG NUMBER	UPC/DCI/NAED MFG #01 8997	TRADE SIZE	STD PKG	DIM A	DIM B	DIM C
SB1	18001	1/2	1000	.940	.470	.700
SB10	18010	1/2	100	.940	.470	.700
SB3	18050	1	1000	1.750	.400	1.150
SB30	18053	1	100	1.750	.400	1.150

Note: See page M-9 for larger sizes.



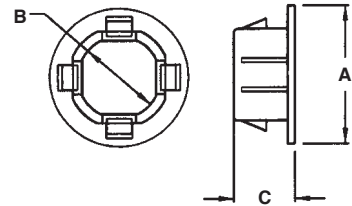


Snap-In Bushings

For knockouts. All-plastic, snap-in type.



CATALOG NUMBER	UPC/DCI/NAED MFG #01 8997	TRADE SIZE	UNIT PKG	STD PKG	DIM A	DIM B	DIM C
4400	04400	1/2	100	1000	1.140	.679	.505
4401	04401	3/4	100	1000	1.420	.900	.505
4402	04402	1	50	500	1.770	1.157	.505
4403	04403	1-1/4	25	250	2.281	1.509	.505
4404	04404	1-1/2	25	250	2.598	1.748	.505
4405	04405	2	20	200	2.919	2.223	.563
4406	04409	2-1/2	20	200	3.421	2.725	.563



Snap-In Blanks

All plastic. For knockouts. Grey color.

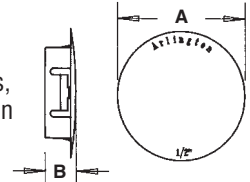


CATALOG NUMBER	UPC/DCI/NAED MFG #01 8997	TRADE SIZE	UNIT PKG	STD PKG	DIM A	DIM B
NM900*	54000	1/2	100	1000	1.015	.468
NM901†	54001	3/4	50	50	1.250	.468
NM902†	54002	1	50	50	1.500	.468
NM903†	54003	1-1/4	25	25	1.906	.468
NM904†	54004	1-1/2	25	25	2.156	.468
NM905†	54005	2	20	20	2.750	.750

*UL and CSA listed.
†UL recognized.



These items cost less than steel snap-in blanks, and provide a safer installation. A metal blank in a plastic box or enclosure is not grounded and could become a shock hazard.

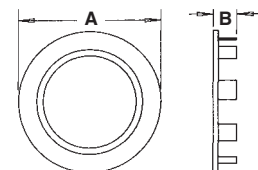


Snap-In Blanks

Plated steel. For knockouts.



CATALOG NUMBER	UPC/DCI/NAED MFG #01 8997	TRADE SIZE	UNIT PKG	STD PKG	DIM A	DIM B
900	00900	1/2	100	1000	1.070	.310
901	00901	3/4	50	50	1.235	.310
902	00902	1	50	50	1.480	.310
903	00903	1-1/4	25	25	1.800	.310
904	00904	1-1/2	25	25	2.215	.360
905	00905	2	20	20	2.675	.360



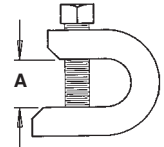


Beam Clamps

Plated steel.



CATALOG NUMBER	UPC/DCI/NAED MFG #01 8997	STATIC LOAD RATING	TRADE SIZE	UNIT PKG	STD PKG	DIM A	THREADED ROD SIZE
BC25	23250	75 LBS.	1	25	100	.608	1/4-20
BC38	23380	200 LBS.	2	25	100	.930	3/8-16

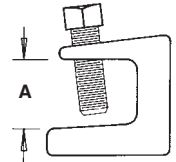


Beam Clamps

Malleable iron. Plated.



CATALOG NUMBER	UPC/DCI/NAED MFG #01 8997	STATIC LOAD RATING	TRADE SIZE	UNIT PKG	STD PKG	DIM A	THREADED ROD SIZE
MBC25	34810	125 LBS.	1	25	100	.772	1/4-20
MBC25A	42321	125 LBS.	1	25	100	.772	10-24
MBC26	42326	300 LBS.	1-1/2	50	50	.878	5/16-18
MBC27	42327	300 LBS.	2	50	50	.878	3/8-16
MBC28	42328	600 LBS.	2-1/2	25	25	1.108	1/2-13

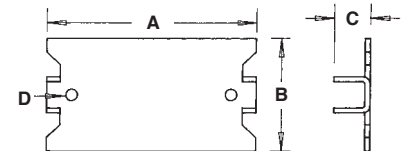


Safety Plate

Flat 16 gauge steel.



CATALOG NUMBER	UPC/DCI/NAED MFG #01 8997	TRADE SIZE	UNIT PKG	STD PKG	DIM A	DIM B	DIM C	DIM D
SP100	17100	1-1/2 x 2-3/4	100	600	2.750	1.500	.475	.155



Jack Chain

Zinc-plated steel. 100 feet per steel reel. Maximum load limit 25 lbs.



CATALOG NUMBER	UPC/DCI/NAED MFG #01 8997	SIZE	UNIT CTN	STD CTN
JC12	13120	1/2	100 ft	100 ft



Concrete Pipe Sleeves

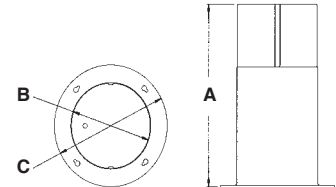
Provides an economical method of sleeving through concrete pour allowing cable or conduit to easily run from one floor to the next. Color - black.



CATALOG NUMBER	UPC/DCI/NAED MFG #01 8997	DESCRIPTION	FITS	STD PKG	DIM A	DIM B	DIM C
CPS15	72150	For 1-1/2" hole	1" pipe	10	8.500	1.625	3.125
CPS20	10960	For 2" hole	1-1/2" pipe	10	8.500	2.125	3.625
CPS30	72152	For 3" hole	2" pipe	10	8.500	3.125	4.625
CPS40	10962	For 4" hole	3" pipe	10	8.500	4.125	5.625
CPS50	72154	For 5" hole	4" pipe	10	8.500	5.125	6.625
CPS60	10964	For 6" hole	5" pipe	10	8.500	6.125	7.625

Features and Benefits

- Stackable for extra deep pours
- Venting prevents sleeves from sticking together when wet
- Plastic



Adjustable Throat Liners

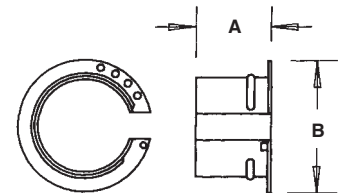
To be installed in fittings after conduit, fitting and wire are in place. Allows installation to meet local electrical code. Non-metallic.



CATALOG NUMBER	UPC/DCI/NAED MFG #01 8997	TRADE SIZE	UNIT PKG	STD PKG	DIM A	DIM B
4001	04001	1/2	25	100	.670	.900
4002	04002	3/4	25	100	.710	1.220
4003	04003	1	25	100	.880	1.450
4004	04004	1-1/4	10	40	1.015	1.735
4005	04005	1-1/2	10	40	1.015	2.050
4006	04006	2	10	40	1.250	2.312



E26807



Duct Seal Compound

Asbestos-free, non-drying, non-toxic, permanently soft.



CATALOG NUMBER	UPC/DCI/NAED MFG #01 8997	TRADE SIZE	UNIT PKG	STD PKG
DSC1	43600	1 LB	1	50
DSC5	43605	5 LB	1	10



R15221

Features and Benefits

- Adheres to most clean, dry surfaces
- Will not adversely affect plastic materials or corrode metals



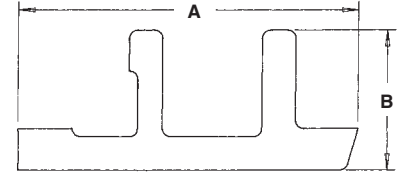
Switch Box Supports

Galvanized steel.



CATALOG NUMBER	UPC/DCI/NAED MFG #01 8997	UNIT PKG	STD PKG	DIM A	DIM B	MATERIAL DIM
SBS	18055	100	1000	5.135	2.135	.020

UL/CSA NOT APPLICABLE

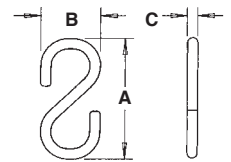


S-Hooks

Plated steel. Maximum load limit 25 lbs.



CATALOG NUMBER	UPC/DCI/NAED MFG #01 8997	SIZE	UNIT PKG	STD PKG	DIM A	DIM B	DIM C
SH1	18100	1-1/4-.106	100	100	1.225	.605	.106
SH2	18200	1-1/2-.135	100	100	1.531	.975	.185



Box-to-Box Locknut and SNAP-TITE® Connectors

Zinc die-cast.



260

260ST

CATALOG NUMBER	UPC/DCI/NAED MFG #01 8997	TRADE SIZE	UNIT PKG	STD PKG	DIM A	DIM B	DIM C	DIM D
260	00260	1/2	25	250	.855	.375	1.120	.100
260ST	06000	1/2	25	250	1.056	.478	1.105	.100

PATENTED.

SNAP-TITE® products have been tested and listed by UL in accordance with UL's ground fault requirements. For additional information see page 6.



E60812 LR49636

