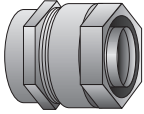


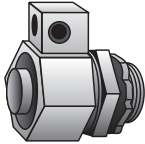
Liquidtight FittingsGA1-GA2



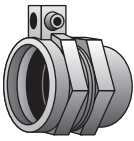
Combination CouplingsGA3



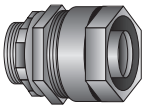
Wire Mesh GripsGA4



Grounding Liquidtight ConnectorsGB1-GB3



Grounding Liquidtight CouplingsGB4



Galvanized Liquidtight ConnectorsGC1-GC3



Ferrule WrenchGC4

Notes

Liquidtight Fittings

Type 4Q - Straight

Use:

To secure, ground and seal Liquidtight Flexible Metal conduit, Type LPMC, to boxes and enclosures.

Features:

- Tapered threaded male hub NPT
- Compact, slim diameter with small turning radius
- Furnished with locknut and sealing ring.
- Liquidtight/Raintight/Oiltight
- Suitable for grounding through 1-1/4" Trade Size per NEC Section 250.118(7)

Trade Size per NEC Section 250.118(7)

- For Trade Sizes 1-1/2" and larger, an internal or external equipment bonding conductor is required. See 4Q-L Series with external ground lug in Catalog Section GB.

- Suitable for use in the following Hazardous Locations:

Class I, Div. 2 per NEC 501.4(B)

Class I, Zone 2 per NEC 505.15(C)(2)

Class II, Div. 1 per NEC 502.4(A)(1)(e)

Class II, Div. 2 per NEC 502.4(B)(2)

Class III, Div. 1 per NEC 503.3(A)(2)

Class III, Div. 2 per NEC 503.3(B)

Intrinsically Safe per NEC 504.20

- Bonding Wedge Locknuts are recommended in Hazardous Locations. See 101 Series on Page DB9.

- Suitable for wet locations

- Long ferrule prevents pullout and tight bend conduit "pop-out"

- Inspection windows in ferrule to ensure full engagement

- See Page GC4 for our patented Ferrule Wrench which makes ferrule installation easy.

Material/Finish:

Malleable Iron Body and Nut, Zinc Electroplated. Steel Ferrule, Zinc Electroplated.

Optional Finish:

Available Hot Dip/Mechanically Galvanized, See 4Q-TG Series in Catalog Section GC.

Third Party Certification:



UL Listed: 11853



CSA Certified: 9795

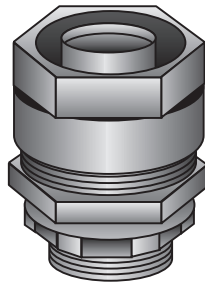
Applicable Third Party Standards:

UL Standard: 514B

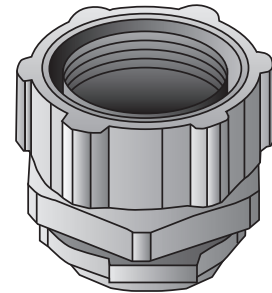
CSA Standard: C22.2 No. 18

NEMA: FB-1

Federal Spec: W-F-406E



Type 4Q-38 — Type 4Q-200

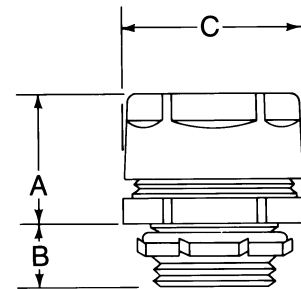


Type 4Q-250 — Type 4Q-600

Trade Size (inches)	Catalog Number	Insulated Throat Catalog Number	Dimensions in Inches		
			A	B	C
% (½ KO)	4Q-38	4Q-38T	1	½	1½
½	4Q-50	4Q-50T	1	½	1¼
¾	4Q-75	4Q-75T	1½	½	1½
1	4Q-100	4Q-100T	1¼	¾	1¾
1¼	4Q-125	4Q-125T	1¾	¾	2½
1½	4Q-150	4Q-150T	1¾	¾	2¾
2	4Q-200	4Q-200T	1½	¾	3¼
2½	4Q-250	4Q-250T	2	1	4¾
3	4Q-300	4Q-300T	2	1½	4¾
3½	4Q-350	4Q-350T	2¼	1¼	4¾
4	4Q-400	4Q-400T	2¼	1¼	6½
5	4Q-500*	4Q-500T*	2¾	1¾	7¾
6	4Q-600**	4Q-600T**	2½	1¾	8¾

*UL Listing not applicable

**CSA Certification not applicable



Liquidtight Fittings

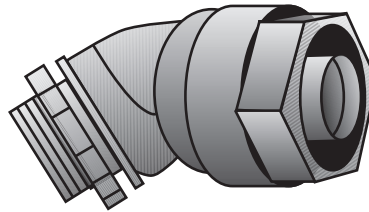
Type 4Q - 45° & 90°

Use:

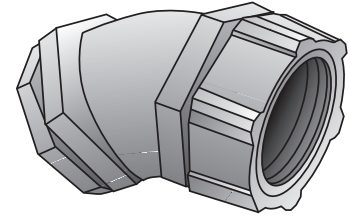
To secure, ground and seal Liquidtight Flexible Metal Conduit, Type LFMC, to boxes and enclosures.

Features:

- Tapered threaded male hub NPT
- Compact, slim diameter with small turning radius.
- Furnished with locknut and sealing ring.
- Liquidtight/Raintight/Oiltight.
- Suitable for grounding through 1-1/4" Trade Size per NEC Section 250.118(7)
- For Trade Sizes 1-1/2" and larger, an internal or external equipment bonding conductor is required. See 4Q-L Series with external ground lug in Catalog Section GB.
- Suitable for use in the following Hazardous Locations:
 - Class I, Div. 2 per NEC 501.4(B)
 - Class I, Zone 2 per NEC 505.15(C)(2)
 - Class II, Div. 1 per NEC 502.4(A)(1)(e)
 - Class II, Div. 2 per NEC 502.4(B)(2)
 - Class III, Div. 1 per NEC 503.3(A)(2)
 - Class III, Div. 2 per NEC 503.3(B)
- Intrinsically Safe per NEC 504.20
- Bonding Wedge Locknuts are recommended in Hazardous Locations. See 101 Series on Page DB9.
- Suitable for wet locations.
- Long ferrule prevents pullout and tight bend conduit "pop-out".
- Inspection windows in ferrule to ensure full engagement.
- See Page GC4 for our patented Ferrule Wrench which makes ferrule installation easy.



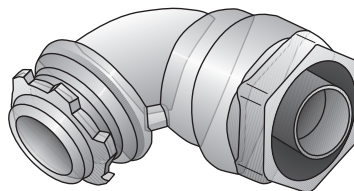
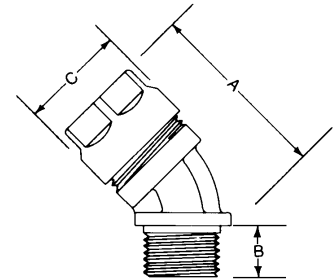
Type 4Q-438 — Type 4Q-4200



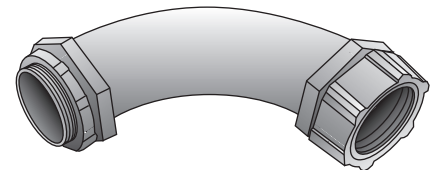
Type 4Q-4250 — Type 4Q-4500

Trade Size (inches)	Catalog Number	Insulated Throat Catalog Number	Dimensions in Inches		
			A	B	C Dia.
¾ (½ KO)	4Q-438	4Q-438T	1 ½	¾	1 ½
½	4Q-450	4Q-450T	1 ½	¾	1 ¼
¾	4Q-475	4Q-475T	2 ¼	¾	1 ½
1	4Q-4100	4Q-4100T	2 ½	½	1 ¼
1 ¼	4Q-4125	4Q-4125T	3 ¼	¾	2 ¼
1 ½	4Q-4150	4Q-4150T	3 ¾	¾	2 ½
2	4Q-4200	4Q-4200T	4	¾	3
2 ½	4Q-4250	4Q-4250T	5 ¾	1	4 ¾
3	4Q-4300	4Q-4300T	6 ½	1 ½	4 ¾
4	4Q-4400	4Q-4400T	7 ½	1 ¾	6 ¾
5	4Q-4500	4Q-4500T	8	1 ¾	7 ¾

*UL Listing not applicable



Type 4Q-938 — Type 4Q-9200



Type 4Q-9250 — Type 4Q-9500

Material/Finish:

Malleable Iron Body and Nut, Zinc Electroplated. Steel Ferrule, Zinc Electroplated.

Optional Finish:

Available Hot-Dip/Mechanically Galvanized, See "4Q-TG" Series in Catalog Section GC.

Third Party Certification:



UL Listed: 11853



CSA Certified: 9795

Applicable Third Party Standards:

UL Standard: 514B

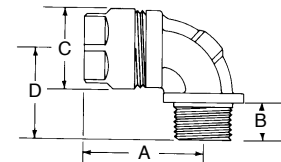
CSA Standard: C22.2 No. 18

NEMA: FB-1

Federal Spec: W-F-406E

Trade Size (inches)	Catalog Number	Insulated Throat Catalog Number	Dimensions in Inches			
			A	B	C	D
¾ (½ KO)	4Q-938	4Q-938T	1 ½	¾	1 ½	1 ¾
½	4Q-950	4Q-950T	1 ½	¾	1 ¼	1 ¾
¾	4Q-975	4Q-975T	1 ¾	¾	1 ½	1 ¾
1	4Q-9100	4Q-9100T	2	½	1 ¼	1 ¾
1 ¼	4Q-9125	4Q-9125T	2 ¼	¾	2 ¼	2 ¾
1 ½	4Q-9150	4Q-9150T	2 ¾	¾	2 ½	2 ¾
2	4Q-9200	4Q-9200T	3 ½	¾	3	2 ¾
2 ½	4Q-9250	4Q-9250T	7 ½	1	4 ¾	7 ¾
3	4Q-9300	4Q-9300T	8 ½	1 ½	4 ¾	8 ¾
4	4Q-9400	4Q-9400T	11 ¾	1 ¾	6 ¾	11
5	4Q-9500	4Q-9500T	14	1 ¾	7 ¾	14

*UL Listing not applicable



Liquidtight Fittings

Type 4Q-FM - Combination Couplings

Use:

Secures, grounds and seals liquidtight flexible metal conduit to threaded rigid conduit and IMC.

Features:

- Female hub, NPT for connection to threaded conduit
- Liquidtight/Raintight/Oiltight
- Suitable for grounding through 1-1/4" Trade Size per NEC Section 250.118(7)
- For Trade Sizes 1-1/2" and larger, an internal or external equipment bonding conductor is required. See 4Q-L Series with external ground lug in Catalog Section GB.
- Suitable for use in the following

Hazardous Locations:

- Class I, Div. 2 per NEC 501.4(B)
- Class I, Zone 2 per NEC 505.15(C)(2)
- Class II, Div. 1 per NEC 502.4(A)(1)(e)
- Class II, Div. 2 per NEC 502.4(B)(2)
- Class III, Div. 1 per NEC 503.3(A)(2)
- Class III, Div. 2 per NEC 503.3(B)
- Intrinsically Safe per NEC 504.20
- Suitable for wet locations
- Long ferrule prevents pullout and tight bend conduit "pop-out"
- Inspection windows in ferrule to ensure full engagement
- See Page GC4 for our patented Ferrule Wrench which makes ferrule installation easy.

Material/Finish:

Malleable Iron/Zinc Plated
Steel Ferrule/Zinc Plated

Optional Finish:

Hot Dip or Mechanical Galvanize, add suffix "G" to catalog number. Contact your local representative for pricing and availability.

Third Party Certification:



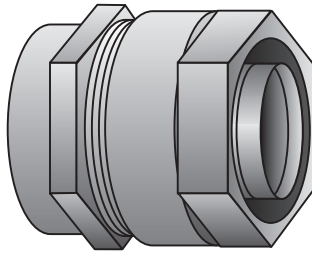
UL Listed: 11853



CSA Certified: 9795

Applicable Third Party Standards:

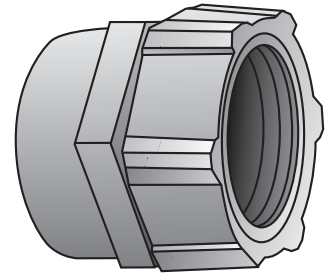
UL Standard: 514B
CSA Standard: C22.2 No. 18
NEMA: FB-1
Federal Spec: W-F-406E



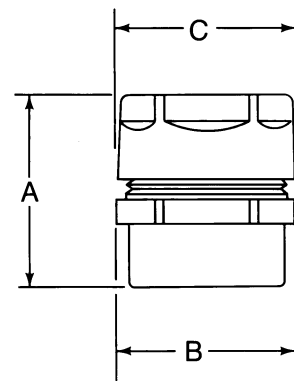
Type 4Q-38FM – Type 4Q-200FM

Trade Size (inches)	Catalog Number	Dimensions in Inches		
		A	B	C
5/8 (1/2 KO)	4Q-38FM	1 11/16	1 3/16	1 1/4
1/2	4Q-50FM	1 1/8	1 1/8	1 1/4
3/4	4Q-75FM	1 5/8	1 1/8	1 1/2
1	4Q-100FM	1 13/16	1 13/16	1 3/4
1 1/4	4Q-125FM	2	2 3/8	2 1/2
1 1/2	4Q-150FM	2 1/8	2 3/8	2 3/4
2	4Q-200FM	2 1/4	3 1/4	3 1/4
2 1/2	4Q-250FM	3 1/4	3 3/8	4 1/4
3	4Q-300FM	3 3/8	4 1/8	4 3/4
3 1/2	4Q-350FM	3 3/8	5 1/8	4 3/4
4	4Q-400FM	3 3/8	5 3/4	6 1/4
5	4Q-500FM	3 3/8	6 3/8	7 1/4

*UL Listing not applicable



Type 4Q-250FM – Type 4Q-500FM



Liquidtight Connectors & Sealing Ring Assemblies

With Wire Mesh Grips & Insulated Throats

Type 4Q-WM

Use:

To secure, ground and seal liquidtight flexible metal conduit to enclosures and prevent conduit pull-out when subject to motion or strain.

Features:

- Tapered threaded male hub NPT
- Furnished with locknut and sealing ring
- Provided with insulated throat
- Wire mesh prevents pull-out and tight end conduit "pop-out"

- Liquidtight/Raintight/Oiltight

- Suitable for grounding through 1-1/4"

Trade Size per NEC Section 250.118(7)

- For Trade Sizes 1-1/2" and larger, an internal or external equipment bonding conductor is required. See 4Q-L Series with external ground lug in Catalog Section GB.

- Suitable for use in the following

Hazardous Locations:

Class I, Div. 2 per NEC 501.4(B)

Class I, Zone 2 per NEC 505.15(C)(2)

Class II, Div. 1 per NEC 502.4(A)(1)(e)

Class II, Div. 2 per NEC 502.4(B)(2)

Class III, Div. 1 per NEC 503.3(A)(2)

Class III, Div. 2 per NEC 503.3(B)

Intrinsically Safe per NEC 504.20

- Bonding Wedge Locknuts are recommended in Hazardous Locations. See 101 Series on Page DB9.

- Suitable for wet locations

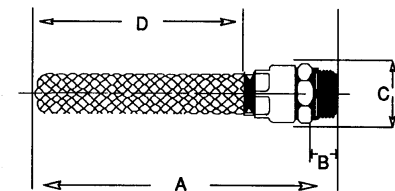
- Inspection windows in ferrule to ensure full conduit engagement

- Stainless steel single weave design

Trade Size (inches)	Catalog Number	Dimensions in Inches			
		A	B	C	D
3/8	4Q-38WM	4 3/8	1/2	1 1/8	2
1/2	4Q-50WM	5 5/8	5/8	1 5/8	2 1/2
3/4	4Q-75WM	6 5/8	5/8	1 1/2	3
1	4Q-100WM	7 1/2	5/8	1 1/4	3 1/4
1 1/4	4Q-125WM	8 3/8	1 1/8	2 1/2	5 1/2
1 1/2	4Q-150WM	9 3/8	1 1/8	2 1/2	7
2	4Q-200WM	10 1 1/8	3/4	3 3/8	7
2 1/2	4Q-250WM	11 1/2	1	4 1/4	8 1/4
3	4Q-300WM	14 1/4	1 1/8	4 3/4	10 1/2
4	4Q-400WM	15 3/4	1 1/4	6	12



Type 4Q-WM



Material:

Malleable Iron Body and Nut, Zinc Electroplated. Steel Ferrule, Zinc Electroplated. Stainless Steel Wire Mesh

Optional Features:

Consult your local representative for 45°, 90°, FM and L (Ground-Tite style) applications

Third Party Certification:



UL Listed: E-11853



CSA Certified: 9795

Applicable Third Party Standards:

UL Standard: 514B

CSA Standard: C22.2 No. 18

NEMA: FB-1

Federal Spec: W-F-406E

Type 4Q-G

Liquidtight Sealing Ring Assemblies

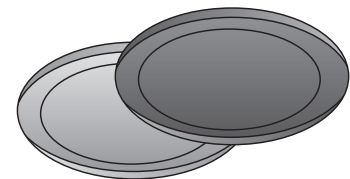
Use:

Provides a positive seal between shoulder of fitting and enclosure

Material/Finish:

Steel Retaining Ring/Zinc Electroplated
Neoprene Gasket

Trade Size (inches)	Catalog Number
3/8 (1/2 KO)	4QG-50*
1/2	4QG-50
3/4	4QG-75
1	4QG-100
1 1/4	4QG-125
1 1/2	4QG-150
2	4QG-200
2 1/2	4QG-250
3	4QG-300
3 1/2	4QG-350
4	4QG-400
5	4QG-500



Type 4Q-G

*May be used with 3/8" trade size fittings with 1/2" hub size.

Ground-Tite® Grounding Liquidtight Connectors

Type 4Q-L

Straight Connectors

Use:

Secures, grounds and seals liquidtight flexible metal conduit and terminates bonding conductor run externally alongside liquidtight conduit.

Features:

- Positive grounding type
- Tapered threaded male hub NPT
- Grounding lug is cast as an integral part of malleable iron gland nut. Provides high ground fault withstand capability
- Compact, slim diameter with small turning radius
- Furnished with locknut and sealing ring
- Liquidtight/Raintight/Oiltight
- Suitable for use in the following

Hazardous Locations:

Class I, Div. 2 per NEC 501.4(B)

Class I, Zone 2 per NEC 505.15(C)(2)

Class II, Div. 1 per NEC 502.4(A)(1)(e)

Class II, Div. 2 per NEC 502.4(B)(2)

Class III, Div. 1 per NEC 503.3(A)(2)

Class III, Div. 2 per NEC 503.3(B)

Intrinsically Safe per NEC 504.20

- Bonding Wedge Locknuts are recommended in Hazardous Locations. See 101 Series on Page DB9.

- Long ferrule prevents pull-out and tight bend conduit "pop-out"

- Inspection windows in ferrule to ensure full engagement

- See Page GC4 for our patented Ferrule Wrench which makes ferrule installation easy.

Material/Finish:

Malleable Iron Body and Nut, Zinc Electroplated. Steel Ferrule, Zinc Electroplated.

Optional Finish:

Hot Dip or Mechanical Galvanize, add suffix "G" to catalog number. Contact your local representative for pricing and availability.

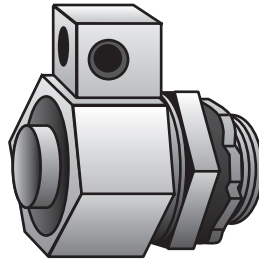
Third Party Certification:



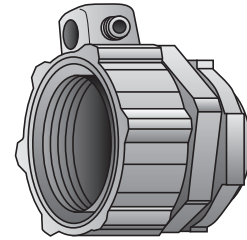
UL Listed: E-24264



CSA Certified: 9795



Type 4Q-38L — Type 4Q-200L

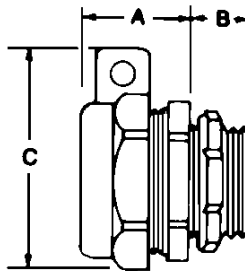


Type 4Q-250L — Type 4Q-600L

Trade Size (inches)	Catalog Number	Insulated Throat Catalog Number	Dimensions in Inches				Turning Radius Gland Nut	Wire Size	
			A	B	C	Min.		Max.	
¾ (½ KO)	4Q-38L	4Q-38LT	¾	½	1 ¹ / ₁₆	1 ¹ / ₁₆	14	4	
½	4Q-50L	4Q-50LT	¾	½	1 ¹ / ₈	1 ³ / ₁₆	14	4	
¾	4Q-75L	4Q-75LT	1	½	2 ¹ / ₈	1 ⁵ / ₁₆	14	4	
1	4Q-100L	4Q-100LT	1 ¹ / ₈	¾	2 ³ / ₈	1 ⁷ / ₁₆	14	4	
1 ¹ / ₄	4Q-125L	4Q-125LT	1 ⁵ / ₁₆	¾	2 ⁷ / ₈	1 ³ / ₈	6	1/0	
1 ¹ / ₂	4Q-150L	4Q-150LT	1 ³ / ₈	¾	3 ¹ / ₄	1 ¹ / ₈	6	1/0	
2	4Q-200L	4Q-200LT	1 ¹ / ₂	¾	3 ³ / ₄	2 ³ / ₁₆	6	1/0	
2 ¹ / ₂	4Q-250L	4Q-250LT	1 ¹⁵ / ₁₆	1	4 ⁵ / ₈	2 ³ / ₄	1	4/0	
3	4Q-300L	4Q-300LT	1 ¹⁵ / ₁₆	1 ¹ / ₈	5 ⁵ / ₁₆	3 ¹ / ₁₆	1	4/0	
3 ¹ / ₂	4Q-350L	4Q-350LT	2 ⁵ / ₈	1 ¹ / ₈	5 ⁹ / ₁₆	3 ³ / ₈	1	4/0	
4	4Q-400L	4Q-400LT	2 ³ / ₄	1 ¹ / ₄	6 ¹ / ₂	3 ⁵ / ₈	1	4/0	
5	4Q-500L*	4Q-500LT*	2 ⁵ / ₈	1 ¹ / ₂	7 ¹ / ₂	4 ³ / ₁₆	1	4/0	
6	4Q-600L*	4Q-600LT*	2 ¹ / ₂	1 ³ / ₈	8 ¹ / ₂	4 ³ / ₄	1	4/0	

*UL Listing not applicable

*CSA Certification not applicable



Applicable Third Party Standards:

UL Standard: 467

CSA Standard: C22.2 No. 41

NEMA: FB-1

Federal Spec: W-F-406E

Suggested Specification:

Where liquidtight flexible metal conduit is used, bonding jumpers shall be provided alongside such conduit and terminated by malleable iron connectors provided with lugs cast integrally with the gland nuts. These connectors shall be O-Z/Gedney Type 4QL.

Ground-Tite® Grounding Liquidtight Connectors

Type 4Q-L

45°

Use:

Secures, grounds and seals liquidtight flexible metal conduit and terminates bonding conductor run externally alongside liquidtight conduit.

Features:

- Positive grounding type
- Tapered threaded male hub NPT
- Grounding lug is cast as an integral part of malleable iron gland nut. Provides high ground fault withstand capability
- Compact, slim diameter with small turning radius
- Furnished with locknut and sealing ring
- Liquidtight/Raintight/Oiltight
- Suitable for use in the following Hazardous Locations:

Locations:

Class I, Div. 2 per NEC 501.4(B)
 Class I, Zone 2 per NEC 505.15(C)(2)
 Class II, Div. 1 per NEC 502.4(A)(1)(e)
 Class II, Div. 2 per NEC 502.4(B)(2)
 Class III, Div. 1 per NEC 503.3(A)(2)
 Class III, Div. 2 per NEC 503.3(B)
 Intrinsically Safe per NEC 504.20

- Bonding Wedge Locknuts are recommended in Hazardous Locations. See 101 Series on Page DB9.
- Long ferrule prevents pull-out and tight bend conduit "pop-out"
- Inspection windows in ferrule to ensure full engagement
- See Page GC4 for our patented Ferrule Wrench which makes ferrule installation easy.

Material/Finish:

Malleable Iron Body and Nut, Zinc Electroplated. Steel Ferrule, Zinc Electroplated.

Optional Finish:

Hot Dip or Mechanical Galvanize, add suffix "G" to catalog number. Contact your local representative for pricing and availability.

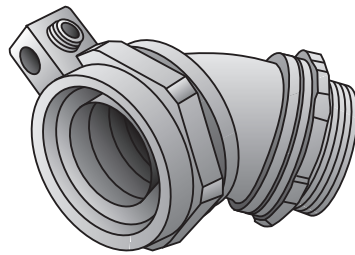
Third Party Certification:



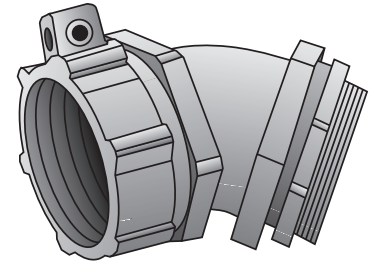
UL Listed: E-24264



CSA Certified: 9795



Type 4Q-438L — Type 4Q-4200L



Type 4Q-4250L — Type 4Q-4500L

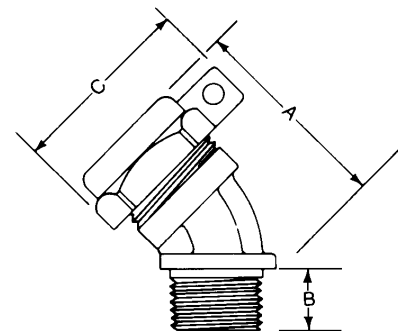
Trade Size (inches)	Catalog Number	Insulated Throat Catalog Number	Dimensions in Inches			Turning Radius Gland Nut	Wire Size	
			A	B	C		Min.	Max.
¾ (½ KO)	4Q-438L	4Q-438LT	1¾	½	1 ¹¹ / ₁₆	1 ¹ / ₁₆	14	4
½	4Q-450L	4Q-450LT	1¾	5 ¹ / ₁₆	1 ¹ / ₁₆	1 ¹ / ₁₆	14	4
¾	4Q-475L	4Q-475LT	2 ¹ / ₁₆	5 ¹ / ₁₆	2 ¹ / ₁₆	1 ¹ / ₁₆	14	4
1	4Q-4100L	4Q-4100LT	3 ³ / ₁₆	½	2 ¹ / ₁₆	1 ¹ / ₁₆	14	4
1¼	4Q-4125L	4Q-4125LT	3	5 ¹ / ₁₆	2 ¹ / ₁₆	1 ¹ / ₁₆	6	1/0
1½	4Q-4150L	4Q-4150LT	3 ³ / ₁₆	5 ¹ / ₁₆	3 ¹ / ₁₆	1 ¹ / ₁₆	6	1/0
2	4Q-4200L	4Q-4200LT	3¾	5 ¹ / ₁₆	3 ¹ / ₁₆	2 ¹ / ₁₆	6	1/0
2½	4Q-4250L	4Q-4250LT	5¾	1	4 ⁵ / ₁₆	2 ³ / ₁₆	1	4/0
3	4Q-4300L	4Q-4300LT	6½	1 ¹ / ₁₆	5 ⁵ / ₁₆	3 ³ / ₁₆	1	4/0
4	4Q-4400L	4Q-4400LT	7½	1 ¹ / ₁₆	6½	3 ³ / ₁₆	1	4/0
5	4Q-4500L	4Q-4500LT	8	1¼	7½	4 ³ / ₁₆	1	4/0

*UL Listing not applicable

Suggested Specification:

Where liquidtight flexible metal conduit is used, bonding jumpers shall be provided alongside such conduit and terminated by malleable iron connectors provided with lugs cast integrally with the gland nuts. These connectors shall be O-Z/Gedney Type 4QL.

PATENTED
(All types this page)



Ground-Tite® Grounding Liquidtight Connectors

Type 4Q-L

90°

Use:

Secures, grounds and seals liquidtight flexible metal conduit and terminates bonding conductor run externally alongside liquidtight conduit.

Features:

- Positive grounding type
- Tapered threaded male hub NPT
- Grounding lug is cast as an integral part of malleable iron gland nut. Provides high ground fault withstand capability
- Compact, slim diameter with small turning radius
- Furnished with locknut and sealing ring
- Liquidtight/Raintight/Oiltight
- Suitable for use in the following Hazardous Locations:

Locations:

- Class I, Div. 2 per NEC 501.4(B)
- Class I, Zone 2 per NEC 505.15(C)(2)
- Class II, Div. 1 per NEC 502.4(A)(1)(e)
- Class II, Div. 2 per NEC 502.4(B)(2)
- Class III, Div. 1 per NEC 503.3(A)(2)
- Class III, Div. 2 per NEC 503.3(B)
- Intrinsically Safe per NEC 504.20
- Bonding Wedge Locknuts are recommended in Hazardous Locations. See 101 Series on Page DB9.

- Long ferrule prevents pull-out and tight bend conduit "pop-out"
- Inspection windows in ferrule to ensure full engagement
- See Page GC4 for our patented Ferrule Wrench which makes ferrule installation easy.

Material/Finish:


Malleable Iron Body and Nut, Zinc Electroplated. Steel Ferrule, Zinc Electroplated.

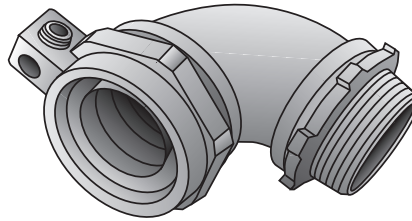
Optional Finish:

Hot Dip or Mechanical Galvanize, add suffix "G" to catalog number. Contact your local representative for pricing and availability.

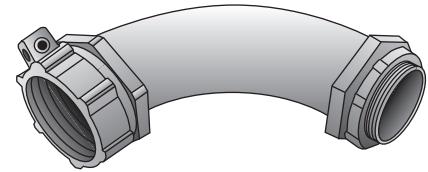
Third Party Certification:

 UL Listed: E-24264

 CSA Certified: 9795



Type 4Q-938L — Type 4Q-9200L



Type 4Q-9250L — Type 4Q-9500L

Trade Size (inches)	Catalog Number	Insulated Throat Catalog Number	Dimensions in Inches				Turning Radius Gland Nut	Wire Size	
			A	B	C	D		Min.	Max.
3/8 (1/2 KO)	4Q-938L	4Q-938LT	1 1/8	1/2	1 1/4	1 1/3	1 11/16	14	4
1/2	4Q-950L	4Q-950LT	1 1/8	1/2	1 1/8	1 1/8	1 3/8	14	4
3/4	4Q-975L	4Q-975LT	1 11/16	1/2	1 1/2	2 1/8	1 3/8	14	4
1	4Q-9100L	4Q-9100LT	1 1/8	1/2	1 1/8	2 1/8	1 3/8	14	4
1 1/4	4Q-9125L	4Q-9125LT	2 1/8	3/4	2 1/8	2 1/8	1 3/8	6	1/0
1 1/2	4Q-9150L	4Q-9150LT	2 3/8	3/4	2 3/8	3 1/8	1 3/8	6	1/0
2	4Q-9200L	4Q-9200LT	3 1/4	3/4	2 3/8	3 3/8	2 3/8	6	1/0
2 1/2	4Q-9250L	4Q-9250LT	7 1/8	1	7 1/8	4 5/8	2 3/8	1	4/0
3	4Q-9300L	4Q-9300LT	8 3/8	1 1/8	8 1/2	5 5/8	3 1/8	1	4/0
4	4Q-9400L	4Q-9400LT	11 1/8	1 1/8	11	6 1/2	3 3/8	1	4/0
5	4Q-9500L	4Q-9500LT	16	1 1/4	14	7 1/2	4 3/8	1	4/0

*UL listing not applicable

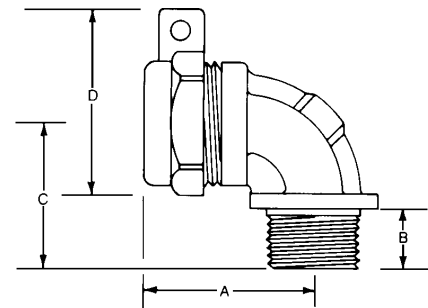
Note:

When the 3/8" through 2" trade size 90° connectors are installed in enclosures with flush threaded openings (internal hubs), insufficient clearance may prevent rotation of the gland nut.

Suggested Specification:

Where liquidtight flexible metal conduit is used, bonding jumpers shall be provided alongside such conduit and terminated by malleable iron connectors provided with lugs cast integrally with the gland nuts. These connectors shall be O-Z/Gedney Type 4QL.

PATENTED
(All types this page)



Ground-Tite® Grounding Liquidtight Couplings

Type 4Q-FML

Combination Couplings

Use:

Secures, grounds and seals liquidtight flexible metal conduit and terminates bonding conductor run externally alongside liquidtight conduit to threaded rigid conduit and IMC.

Features:

- Positive grounding type
- Liquidtight flexible metal conduit to threaded rigid conduit and IMC
- Female hub NPT
- Grounding lug is cast as an integral part of malleable iron gland nut. Provides high ground fault withstand capability
- Compact, slim diameter with small turning radius
- Furnished with locknut and sealing ring
- Liquidtight/Raintight/Oiltight
- Suitable for use in the following Hazardous Locations:
 - Class I, Div. 2 per NEC 501.4(B)
 - Class I, Zone 2 per NEC 505.15(C)(2)
 - Class II, Div. 1 per NEC 502.4(A)(1)(e)
 - Class II, Div. 2 per NEC 502.4(B)(2)
 - Class III, Div. 1 per NEC 503.3(A)(2)
 - Class III, Div. 2 per NEC 503.3(B)
- Intrinsically Safe per NEC 504.20
- Bonding Wedge Locknuts are recommended in Hazardous Locations. See 101 Series on Page DB9.
- Long ferrule prevents pull-out and tight bend conduit "pop-out"
- * Inspection windows in ferrule to ensure full engagement
- See Page GC4 for our patented Ferrule Wrench which makes ferrule installation easy.

Material/Finish:


Malleable Iron Body and Nut, Zinc Electroplated. Steel Ferrule, Zinc Electroplated.

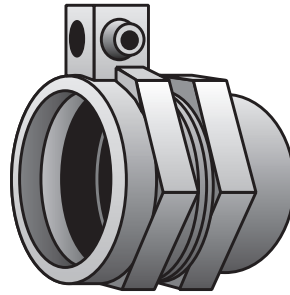
Optional Finish:

Hot Dip or Mechanical Galvanize, add suffix "G" to catalog number. Contact your local representative for pricing and availability.

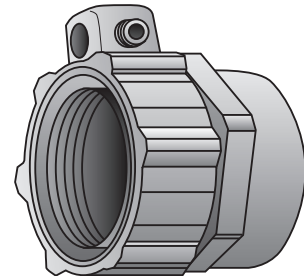
Third Party Certification:

 UL Listed: E-24264

 CSA Certified: 9795



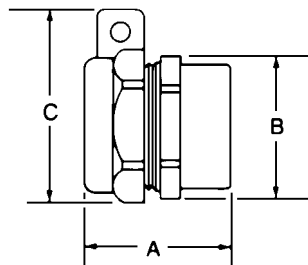
Type 4Q-38FML — Type 4Q-200FML



Type 4Q-250FML — Type 4Q-500FML

Trade Size (inches)	Catalog Number	Dimensions in Inches			Turning Radius Gland Nut	Wire Size	
		A	B	C		Min.	Max.
½ (½ KO)	4Q-38FML	1 ¹ / ₆	1 ³ / ₆	1 ¹¹ / ₆	1 ¹ / ₆	14	4
½	4Q-50FML	1 ³ / ₆	1 ⁵ / ₆	1 ⁷ / ₆	1 ³ / ₆	14	4
¾	4Q-75FML	1 ⁵ / ₆	1 ⁷ / ₆	2 ¹ / ₆	1 ⁵ / ₆	14	4
1	4Q-100FML	1 ⁷ / ₆	1 ⁹ / ₆	2 ³ / ₆	1 ⁷ / ₆	14	4
1¼	4Q-125FML	2	2 ⁵ / ₆	2 ⁷ / ₆	1 ³ / ₄	6	1/0
1½	4Q-150FML	2 ² / ₆	2 ⁴ / ₆	3 ¹ / ₆	1 ⁷ / ₆	6	1/0
2	4Q-200FML	2 ⁴ / ₆	3 ¹ / ₆	3 ³ / ₆	2 ³ / ₆	6	1/0
2½	4Q-250FML	3 ¹ / ₆	3 ³ / ₆	4 ¹ / ₆	2 ³ / ₄	1	4/0
3	4Q-300FML	3 ³ / ₆	4 ¹ / ₆	5 ¹ / ₆	3 ¹ / ₆	1	4/0
3½	4Q-350FML	3 ⁵ / ₆	5 ¹ / ₆	5 ³ / ₆	3 ³ / ₆	1	4/0
4	4Q-400FML	3 ⁷ / ₆	5 ³ / ₆	6 ¹ / ₆	3 ⁵ / ₆	1	4/0
5	4Q-500FML	3 ⁹ / ₆	6 ¹ / ₆	7 ¹ / ₆	4 ³ / ₆	1	4/0

*UL Listing not applicable



Applicable Third Party Standards:

UL Standard: 467
 CSA Standard: C22.2 No. 41
 NEMA: FB-1
 Federal Spec: W-F-406E

PATENTED
 (All types this page)

Liquidtight Connectors

Hot-Dip/Mechanically Galvanized with Insulated Throat

Type 4Q-TG

For Use in Severe Industrial and Environmental Atmospheres

Standard zinc electroplated fittings offer more than adequate protection in areas relatively free of highly corrosive fumes and liquids. However, in an atmosphere where severe contaminants are present, a heavy coating of zinc galvanize offers one of the best protections against corrosion. In the processes of hot-dipping or mechanically galvanizing, a large amount of zinc is deposited on the surface of the base metal to a minimum of .002" or about 10 times the usual electroplating thickness.

In the Series 4Q-TG, mechanically galvanized finish is provided on small sizes through 2" on angle connectors and through 4" on straights. Hot-dip galvanized finish is provided on sizes 2½" and larger on angle connectors and 5" and larger on straights. Mechanical galvanizing provides coating thickness and corrosion protection comparable to the hot-dip process but offers the additional advantage of providing heavy plating on threaded surfaces as well. Mechanical galvanizing meets the performance criteria of ASTM A-153 Class D and B-695 Class 50.

The Process of Mechanical Galvanizing on Smaller Parts Provides:

- Excellent coating uniformity on all surface areas, particularly on threads.
- Complete coating assurance with proper mating of threaded parts.
- A heavier coating than is possible with conventional methods of electroplating.
- Quality and thickness comparable to the hot-dip galvanizing method.
- Favorable comparison with the hot-dip process of parts tested in salt spray and industrial atmospheres.

Liquidtight Fittings

Hot-Dip/Mechanically Galvanized with Insulated Throat

Type 4Q-TG

Straight

Use:

To secure, ground and seal Liquidtight Flexible Metal conduit, Type LFMC, to boxes and enclosures.

Features:

- With Insulated Throat
- Tapered threaded male hub NPT
- Compact, slim diameter with small turning radius
- Furnished with locknut and sealing ring.
- Liquidtight/Raintight/Oiltight
- Suitable for grounding through 1-1/4" Trade Size per NEC Section 250.118(7)
- For Trade Sizes 1-1/2" and larger, an internal or external equipment bonding conductor is required. See 4Q-L Series with external ground lug in Catalog Section GB.
- Suitable for use in the following Hazardous Locations:
 - Class I, Div. 2 per NEC 501.4(B)
 - Class I, Zone 2 per NEC 505.15(C)(2)
 - Class II, Div. 1 per NEC 502.4(A)(1)(e)
 - Class II, Div. 2 per NEC 502.4(B)(2)
 - Class III, Div. 1 per NEC 503.3(A)(2)
 - Class III, Div. 2 per NEC 503.3(B)
- Intrinsically Safe per NEC 504.20
- Bonding Wedge Locknuts are recommended in Hazardous Locations. See 101 Series on Page DB9.
- Suitable for wet locations
- Long ferrule prevents pullout and tight bend conduit "pop-out"
- Inspection windows in ferrule to ensure full engagement
- Provided with insulated throat
- See Page GC4 for our patented Ferrule Wrench which makes ferrule installation easy.

Material/Finish:

Malleable Iron/Galvanized
Steel Ferrule/Zinc Electroplated

Third Party Certification:



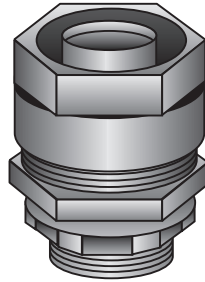
UL Listed: 11853



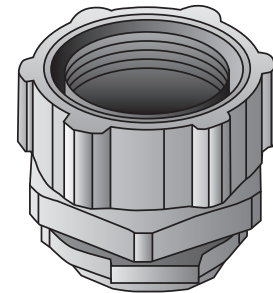
CSA Certified: 9795

Applicable Third Party Standards:

UL Standard: 514B
CSA Standard: C22.2 No. 18
NEMA: FB-1
Federal Spec: W-F-406E



Type 4Q-38TG – Type 4Q-200TG

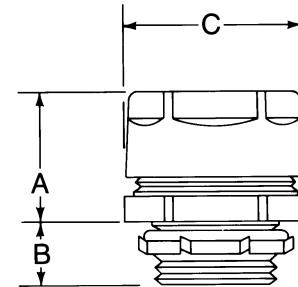


Type 4Q-250TG – Type 4Q-600TG

Trade Size (inches)	Insulated Throat Catalog Number	Dimensions in Inches		
		A	B	C
½ (½ KO)	4Q-38TG	1	½	1½
½	4Q-50TG	1	½	1¼
¾	4Q-75TG	1½	½	1½
1	4Q-100TG	1¼	⅝	1¾
1¼	4Q-125TG	1¾	⅝	2½
1½	4Q-150TG	1¾	⅝	2¾
2	4Q-200TG	1½	⅝	3¼
2½	4Q-250TG	2	1	4½
3	4Q-300TG	2	1½	4½
3½	4Q-350TG	2¼	1¼	4½
4	4Q-400TG	2¼	1¼	6½
5	4Q-500TG*	2½	1½	7½
6	4Q-600TG*	2½	1½	8½

*UL Listing not applicable

*CSA Certification not applicable



Liquidtight Fittings

Hot-Dip/Mechanically Galvanized with Insulated Throat

Type 4Q-TG

45° & 90°

Use:

To secure, ground and seal Liquidtight Flexible Metal conduit, Type LFMC, to boxes and enclosures.

Features:

- Tapered threaded male hub NPT
- Compact, slim diameter with small turning radius.
- Furnished with locknut and sealing ring.
- Liquidtight/Raintight/Oiltight.
- Suitable for grounding through 1-1/4" Trade Size per NEC Section 250.118(7)
- For Trade Sizes 1-1/2" and larger, an internal or external equipment bonding conductor is required. See 4Q-L Series with external ground lug in Catalog Section GB.
- Suitable for use in the following Hazardous Locations:

Class I, Div. 2 per NEC 501.4(B)

Class I, Zone 2 per NEC 505.15(C)(2)

Class II, Div. 1 per NEC 502.4(A)(1)(e)

Class II, Div. 2 per NEC 502.4(B)(2)

Class III, Div. 1 per NEC 503.3(A)(2)

Class III, Div. 2 per NEC 503.3(B)

Intrinsically Safe per NEC 504.20

• Bonding Wedge Locknuts are recommended in Hazardous Locations. See 101 Series on Page DB9.

• Suitable for wet locations.

• Long ferrule prevents pullout and tight bend conduit "pop-out".

• Inspection windows in ferrule to ensure full engagement.

• Provided with insulated throat

• See Page GC4 for our patented Ferrule Wrench which makes ferrule installation easy.

Material/Finish:

Malleable Iron/Galvanized

Steel Ferrule/Zinc Electroplated

Third Party Certification:



UL Listed: 11853



CSA Certified: 9795

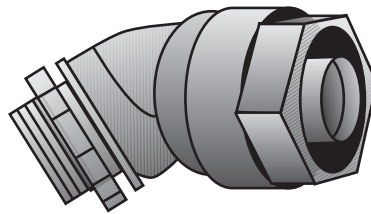
Applicable Third Party Standards:

UL Standard: 514B

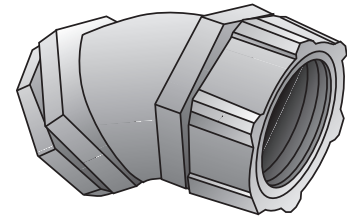
CSA Standard: C22.2 No. 18

NEMA: FB-1

Federal Spec: W-F-406E



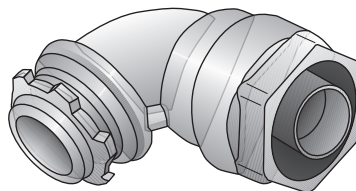
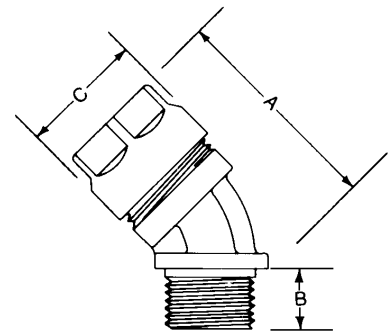
Type 4Q-438TG — Type 4Q-4200TG



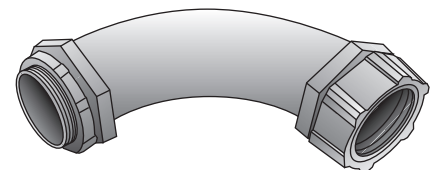
Type 4Q-4250TG — Type 4Q-4500TG

Trade Size (inches)	Insulated Throat Catalog Number	Dimensions in Inches		
		A	B	C Dia.
¾ (½ KO)	4Q-438TG	1 ½	¾	1 ½
	4Q-450TG	1 ½	¾	1 ¼
	4Q-475TG	2 ¼	¾	1 ½
1	4Q-4100TG	2 ¾	½	1 ¼
1 ¼	4Q-4125TG	3 ¼	¾	2 ¼
1 ½	4Q-4150TG	3 ¾	¾	2 ¾
2	4Q-4200TG	4	¾	3
2 ½	4Q-4250TG	5 ¼	1	4 ¼
3	4Q-4300TG	6 ½	1 ¼	4 ¾
4	4Q-4400TG	7 ½	1 ¼	6 ¼
5	4Q-4500TG*	8	1 ¼	7 ¾

*UL Listing not applicable



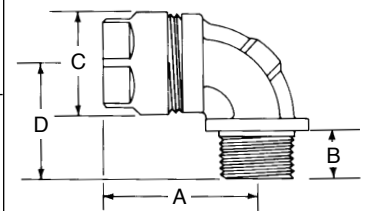
Type 4Q-938TG — Type 4Q-9200TG



Type 4Q-9250TG — Type 4Q-9500TG

Trade Size (inches)	Insulated Throat Catalog Number	Dimensions in Inches			
		A	B	C	D
¾ (½ KO)	4Q-938TG	1 ¾	¾	1 ½	1 ¾
	4Q-950TG	1 ¾	¾	1 ¼	1 ¾
	4Q-975TG	1 ¾	½	1 ½	1 ½
1	4Q-9100TG	2	½	1 ¼	1 ¾
1 ¼	4Q-9125TG	2 ¾	¾	2 ¼	2 ¾
1 ½	4Q-9150TG	2 ¾	¾	2 ¾	2 ¾
2	4Q-9200TG	3 ¾	¾	3	2 ¾
2 ½	4Q-9250TG	7 ½	1	4 ¾	7 ¾
3	4Q-9300TG	8 ¾	1 ¼	4 ¾	8 ½
4	4Q-9400TG	11 ¾	1 ¼	6 ¾	11
5	4Q-9500TG*	14	1 ¼	7 ¾	14

*UL Listing not applicable



Ferrule Wrench

Type 4Q-Wrench

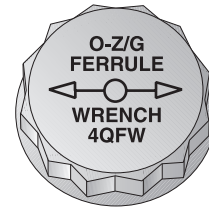
Features:

- Innovative plastic wrench mates up with $\frac{3}{8}$ ", $\frac{1}{2}$ " and $\frac{3}{4}$ " trade size ferrules.
- Speeds installation time.
- Eliminates the use of tools used in the field that can crush ferrules.
- Reduces injuries from sharp edges caused during installation.
- For use with O-Z/Gedney Type 4Q liquidtight connectors listed in Sections GA, GB and GC.

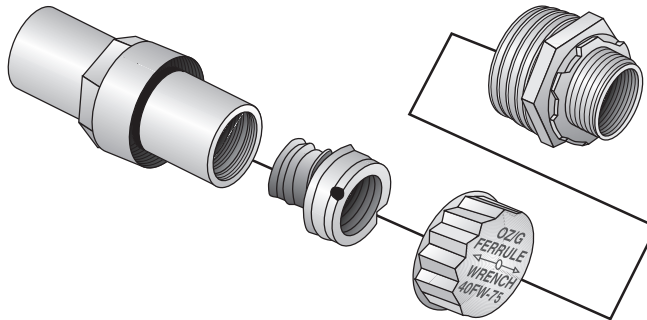
Material/Finish:

Plastic

Trade Size (inches)	Catalog Number
$\frac{3}{8}$	4QFW-38
$\frac{1}{2}$	4QFW-50
$\frac{3}{4}$	4QFW-75



Type 4QFW



Ferrule Installation