

Poleline Bolts



SQUARE HEAD MACHINE BOLT WITH NUT 316SS

5/8" SQUARE HEAD MACHINE BOLT WITH NUT 316SS

PART#	DESCRIPTION	PKG QTY	CTN QTY	CTN WT.
8222SS	5/8" X 10" SQUARE HEAD MACHINE BOLT WITH NUT 316SS	40	1	38
8220SS	5/8" X 8" SQUARE HEAD MACHINE BOLT WITH NUT 316SS	20	1	15
8224SS	5/8" X 12" SQUARE HEAD MACHINE BOLT WITH NUT 316SS	40	1	45
8226SS	5/8" X 14" SQUARE HEAD MACHINE BOLT WITH NUT 316SS	40	1	51
8228SS	5/8" X 16" SQUARE HEAD MACHINE BOLT WITH NUT 316SS	30	1	42



3/4" SQUARE HEAD MACHINE BOLT WITH NUT 316SS

PART#	DESCRIPTION	PKG QTY	CTN QTY	CTN WT.
8240SS	3/4" X 10" SQUARE HEAD MACHINE BOLT WITH NUT 316SS	30	1	45
8242SS	3/4" X 12" SQUARE HEAD MACHINE BOLT WITH NUT 316SS	20	1	34
8244SS	3/4" X 14" SQUARE HEAD MACHINE BOLT WITH NUT 316SS	20	1	39
8246SS	3/4" X 16" SQUARE HEAD MACHINE BOLT WITH NUT 316SS	20	1	40
8250SS	3/4" X 20" SQUARE HEAD MACHINE BOLT WITH NUT 316SS	10	1	28



Square Head Machine Bolt

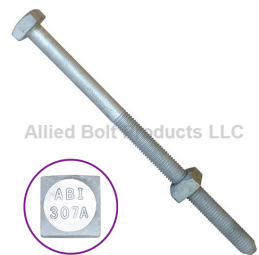
1/4" SQUARE HEAD MACHINE BOLT WITH NUT

PART#	DESCRIPTION	PKG QTY	CTN QTY	CTN WT.
648	1/4" x 1" SQUARE HEAD MACHINE BOLT WITH NUT	100	16	48



3/8" SQUARE HEAD MACHINE BOLT WITH NUT

PART#	DESCRIPTION	PKG QTY	CTN QTY	CTN WT.
647	3/8" X 1" SQUARE HEAD MACHINE BOLT WITH NUT	100	4	28
649	3/8" X 1-1/2" SQUARE HEAD MACHINE BOLT WITH NUT	50	8	34
650	3/8" X 2" SQUARE HEAD MACHINE BOLT WITH NUT	50	4	36
651	3/8" X 2-1/2" SQUARE HEAD MACHINE BOLT WITH NUT	50	4	22
652	3/8" X 3" SQUARE HEAD MACHINE BOLT WITH NUT	50	4	25
65212	3/8" X 3-1/2" SQUARE HEAD MACHINE BOLT WITH NUT	25	4	0
8211	3/8" x 4" SQUARE HEAD MACHINE BOLT WITH NUT	100	1	17
661	3/8" x 4-1/2" SQUARE HEAD MACHINE BOLT WITH NUT	50	4	24
8212	3/8" X 5" SQUARE HEAD MACHINE BOLT WITH NUT	100	1	18
8213	3/8" X 5-1/2" SQUARE HEAD MACHINE BOLT WITH NUT	100	1	18
6660	3/8" X 6" SQUARE HEAD MACHINE BOLT WITH NUT	100	1	26



3/8" SQUARE HEAD MACHINE BOLT WITH NUT (W/ CONE POINT)

PART#	DESCRIPTION	PKG QTY	CTN QTY	CTN WT.
8216	3/8" X 7" SQUARE HEAD MACHINE BOLT WITH NUT	100	1	25
8217	3/8" X 8" SQUARE HEAD MACHINE BOLT WITH NUT	100	1	30



Allied Bolt Products, LLC

1/2" SQUARE HEAD MACHINE BOLT WITH NUT

PART#	DESCRIPTION	PKG QTY	CTN QTY	CTN WT.
236	1/2" X 1" SQUARE HEAD MACHINE BOLT WITH NUT	100	1	13
8202	1/2" X 1-1/4" SQUARE HEAD MACHINE BOLT WITH NUT	100	1	16
8920	1/2" X 1-1/2" SQUARE HEAD MACHINE BOLT WITH NUT	100	1	20
251	1/2" X 1-3/4" SQUARE HEAD MACHINE BOLT WITH NUT	100	1	20
10035	1/2" X 2" SQUARE HEAD MACHINE BOLT WITH NUT	100	1	20
8239	1/2" X 2-1/2" SQUARE HEAD MACHINE BOLT WITH NUT	100	1	23
10036	1/2" X 3" SQUARE HEAD MACHINE BOLT WITH NUT	100	1	25
100365	1/2" X 3-1/2" SQUARE HEAD MACHINE BOLT WITH NUT	100	1	30
10037	1/2" X 4" SQUARE HEAD MACHINE BOLT WITH NUT	100	1	29
8208	1/2" X 4-1/2" SQUARE HEAD MACHINE BOLT WITH NUT	100	1	29
10038	1/2" X 5" SQUARE HEAD MACHINE BOLT WITH NUT	100	1	33
8209	1/2" X 6" SQUARE HEAD MACHINE BOLT WITH NUT	100	1	41

1/2" SQUARE HEAD MACHINE BOLT (NUT NOT INCLUDED)

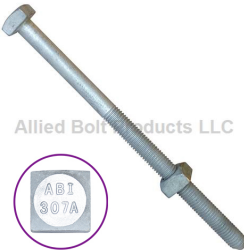
PART#	DESCRIPTION	PKG QTY	CTN QTY	CTN WT.
8203	1/2" X 2 1/2" SQUARE HEAD MACHINE BOLT	100	1	23



Allied Bolt Products, LLC

1/2" SQUARE HEAD MACHINE BOLT WITH NUT (W/ CONE POINT)

PART#	DESCRIPTION	PKG QTY	CTN QTY	CTN WT.
7930	1/2" x 7" SQUARE HEAD MACHINE BOLT WITH NUT	100	1	47
8110	1/2" X 8" SQUARE HEAD MACHINE BOLT WITH NUT	100	1	48
8922	1/2" X 9" SQUARE HEAD MACHINE BOLT WITH NUT	75	1	42
8111	1/2" X 10" SQUARE HEAD MACHINE BOLT WITH NUT	75	1	47
8112	1/2" X 12" SQUARE HEAD MACHINE BOLT WITH NUT	50	1	36
8210	1/2" X 14" SQUARE HEAD MACHINE BOLT WITH NUT	50	1	40
8924	1/2" X 16" SQUARE HEAD MACHINE BOLT WITH NUT	40	1	32
8925	1/2" X 18" SQUARE HEAD MACHINE BOLT WITH NUT	40	1	32
8927	1/2" X 20" SQUARE HEAD MACHINE BOLT WITH NUT	25	1	24
8932	1/2" X 22" SQUARE HEAD MACHINE BOLT WITH NUT	25	1	30
8934	1/2" X 24" SQUARE HEAD MACHINE BOLT WITH NUT	25	1	28



Allied Bolt Products, LLC

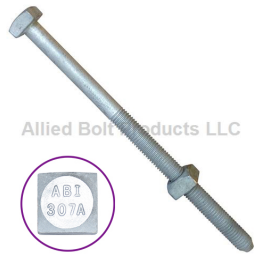


5/8" SQUARE HEAD MACHINE BOLT WITH NUT

PART#	DESCRIPTION	PKG QTY	CTN QTY	CTN WT.
8117	5/8" x 1" SQUARE HEAD MACHINE BOLT WITH NUT	50	1	14
8120	5/8" X 1-1/4" SQUARE HEAD MACHINE BOLT WITH NUT	100	1	12
8121	5/8" X 1-1/2" SQUARE HEAD MACHINE BOLT WITH NUT	100	1	33
8119	5/8" X 1-3/4" SQUARE HEAD MACHINE BOLT WITH NUT	100	1	17
8122	5/8" X 2" SQUARE HEAD MACHINE BOLT WITH NUT	100	1	39
8123	5/8" X 2-1/2" SQUARE HEAD MACHINE BOLT WITH NUT	100	1	41
8124	5/8" X 3" SQUARE HEAD MACHINE BOLT WITH NUT	50	1	22
8118	5/8" X 3-1/2" SQUARE HEAD MACHINE BOLT WITH NUT	50	1	17
8125	5/8" X 4" SQUARE HEAD MACHINE BOLT WITH NUT	100	1	48
8127	5/8" X 4-1/2" SQUARE HEAD MACHINE BOLT WITH NUT	50	1	22
8126	5/8" X 5" SQUARE HEAD MACHINE BOLT WITH NUT	20	1	12
8204	5/8" X 5-1/2" SQUARE HEAD MACHINE BOLT WITH NUT	100	1	61
8214	5/8" X 6" SQUARE HEAD MACHINE BOLT WITH NUT	50	1	43



Allied Bolt Products, LLC



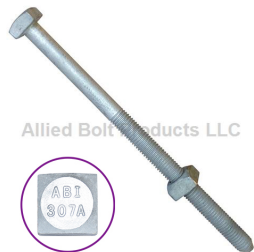
5/8" SQUARE HEAD MACHINE BOLT WITH NUT (W/ CONE POINT)

PART#	DESCRIPTION	PKG QTY	CTN QTY	CTN WT.
8215	5/8" X 7" SQUARE HEAD MACHINE BOLT WITH NUT	50	1	36
8220	5/8" X 8" SQUARE HEAD MACHINE BOLT WITH NUT	50	1	45
8926	5/8" X 9" SQUARE HEAD MACHINE BOLT WITH NUT	50	1	45
8222	5/8" X 10" SQUARE HEAD MACHINE BOLT WITH NUT	40	1	38
8224	5/8" X 12" SQUARE HEAD MACHINE BOLT WITH NUT	40	1	45
8226	5/8" X 14" SQUARE HEAD MACHINE BOLT WITH NUT	40	1	51
8228	5/8" X 16" SQUARE HEAD MACHINE BOLT WITH NUT	30	1	42
8230	5/8" X 18" SQUARE HEAD MACHINE BOLT WITH NUT	30	1	48
8232	5/8" X 20" SQUARE HEAD MACHINE BOLT WITH NUT	20	1	44
8234	5/8" X 22" SQUARE HEAD MACHINE BOLT WITH NUT	20	1	32
8236	5/8" X 24" SQUARE HEAD MACHINE BOLT WITH NUT	20	1	38
10048	5/8" X 26" SQUARE HEAD MACHINE BOLT WITH NUT	20	1	44
8237	5/8" X 28" SQUARE HEAD MACHINE BOLT WITH NUT	20	1	50
8235	5/8" X 30" SQUARE HEAD MACHINE BOLT WITH NUT	15	1	36
8928	5/8" X 32" SQUARE HEAD MACHINE BOLT WITH NUT	15	1	39
8929	5/8" X 34" SQUARE HEAD MACHINE BOLT WITH NUT	15	1	42
8931	5/8" X 36" SQUARE HEAD MACHINE BOLT WITH NUT	15	1	45
8935	5/8" X 40" SQUARE HEAD MACHINE BOLT WITH NUT	5	1	16



3/4" SQUARE HEAD MACHINE BOLT WITH NUT

PART#	DESCRIPTION	PKG QTY	CTN QTY	CTN WT.
8150	3/4" X 2" SQUARE HEAD MACHINE BOLT WITH NUT	100	1	38
8151	3/4" X 3" SQUARE HEAD MACHINE BOLT WITH NUT	100	1	64
8152	3/4" X 4" SQUARE HEAD MACHINE BOLT WITH NUT	100	1	46
8153	3/4" X 6" SQUARE HEAD MACHINE BOLT WITH NUT	50	1	48



3/4" SQUARE HEAD MACHINE BOLT WITH NUT (W/ CONE POINT)

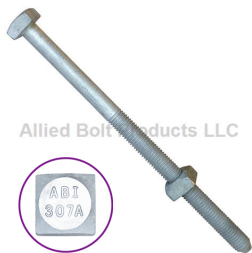
PART#	DESCRIPTION	PKG QTY	CTN QTY	CTN WT.
8154	3/4" X 7" SQUARE HEAD MACHINE BOLT WITH NUT	50	1	53
8238	3/4" X 8" SQUARE HEAD MACHINE BOLT WITH NUT	40	1	48
8240	3/4" X 10" SQUARE HEAD MACHINE BOLT WITH NUT	30	1	35
8242	3/4" X 12" SQUARE HEAD MACHINE BOLT WITH NUT	20	1	34
8244	3/4" X 14" SQUARE HEAD MACHINE BOLT WITH NUT	20	1	39
8246	3/4" X 16" SQUARE HEAD MACHINE BOLT WITH NUT	20	1	44
8248	3/4" X 18" SQUARE HEAD MACHINE BOLT WITH NUT	20	1	47
8250	3/4" X 20" SQUARE HEAD MACHINE BOLT WITH NUT	20	1	56
8252	3/4" X 22" SQUARE HEAD MACHINE BOLT WITH NUT	10	1	32
8254	3/4" X 24" SQUARE HEAD MACHINE BOLT WITH NUT	10	1	36
8255	3/4" X 26" SQUARE HEAD MACHINE BOLT WITH NUT	10	1	31
8259	3/4" X 28" SQUARE HEAD MACHINE BOLT WITH NUT	10	1	35
8930	3/4" X 30" SQUARE HEAD MACHINE BOLT WITH NUT	10	1	40
82623	3/4" X 32" SQUARE HEAD MACHINE BOLT WITH NUT	10	1	40
82624	3/4" X 34" SQUARE HEAD MACHINE BOLT WITH NUT	10	1	40
82625	3/4" X 36" SQUARE HEAD MACHINE BOLT WITH NUT	10	1	42



Allied Bolt Products LLC

7/8" SQUARE HEAD MACHINE BOLT WITH NUT

PART#	DESCRIPTION	PKG QTY	CTN QTY	CTN WT.
82410	7/8" X 3" SQUARE HEAD MACHINE BOLT WITH NUT	50	1	50

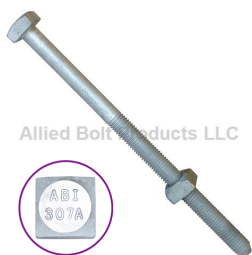


Allied Bolt Products LLC



7/8" SQUARE HEAD MACHINE BOLT WITH NUT (W/ CONE POINT)

PART#	DESCRIPTION	PKG QTY	CTN QTY	CTN WT.
8970	7/8" X 12" SQUARE HEAD MACHINE BOLT WITH NUT	15	1	35
8971	7/8" X 14" SQUARE HEAD MACHINE BOLT WITH NUT	15	1	40
8972	7/8" X 16" SQUARE HEAD MACHINE BOLT WITH NUT	15	1	45
8256	7/8" X 18" SQUARE HEAD MACHINE BOLT WITH NUT	10	1	34
8257	7/8" X 20" SQUARE HEAD MACHINE BOLT WITH NUT	8	1	29
8973	7/8" X 22" SQUARE HEAD MACHINE BOLT WITH NUT	8	1	30
8606	7/8" X 24" SQUARE HEAD MACHINE BOLT WITH NUT	8	1	32
8607	7/8" X 26" SQUARE HEAD MACHINE BOLT WITH NUT	8	1	34
8608	7/8" X 28" SQUARE HEAD MACHINE BOLT WITH NUT	8	1	39
8609	7/8" X 30" SQUARE HEAD MACHINE BOLT WITH NUT	8	1	40
8610	7/8" X 32" SQUARE HEAD MACHINE BOLT WITH NUT	8	1	42
8611	7/8" X 34" SQUARE HEAD MACHINE BOLT WITH NUT	8	1	44
8612	7/8" X 36" SQUARE HEAD MACHINE BOLT WITH NUT	8	1	46
8620	7/8" X 38" SQUARE HEAD MACHINE BOLT WITH NUT	5	1	34
8622	7/8" X 40" SQUARE HEAD MACHINE BOLT WITH NUT	5	1	38
8624	7/8" X 42" SQUARE HEAD MACHINE BOLT WITH NUT	5	1	39
8626	7/8" X 44" SQUARE HEAD MACHINE BOLT WITH NUT	5	1	41
8628	7/8" X 46" SQUARE HEAD MACHINE BOLT WITH NUT	5	1	43
8629	7/8" X 48" SQUARE HEAD MACHINE BOLT WITH NUT	5	1	45
8630	7/8" X 50" SQUARE HEAD MACHINE BOLT WITH NUT	5	1	47



Allied Bolt Products LLC



1" SQUARE HEAD MACHINE BOLT WITH NUT (W/ CONE POINT)

PART#	DESCRIPTION	PKG QTY	CTN QTY	CTN WT.
8292	1" X 12" SQUARE HEAD MACHINE BOLT WITH NUT	12	1	32
8293	1" X 14" SQUARE HEAD MACHINE BOLT WITH NUT	12	1	36
8294	1" X 16" SQUARE HEAD MACHINE BOLT WITH NUT	10	1	31
8297	1" X 18" SQUARE HEAD MACHINE BOLT WITH NUT	7	1	28
8295	1" X 20" SQUARE HEAD MACHINE BOLT WITH NUT	7	1	30
8298	1" X 22" SQUARE HEAD MACHINE BOLT WITH NUT	7	1	35
8299	1" X 24" SQUARE HEAD MACHINE BOLT WITH NUT	7	1	41
82995	1" X 26" SQUARE HEAD MACHINE BOLT WITH NUT	6	1	44
82994	1" X 28" SQUARE HEAD MACHINE BOLT WITH NUT	6	1	40
82996	1" X 30" SQUARE HEAD MACHINE BOLT WITH NUT	7	1	49
82999	1" X 32" SQUARE HEAD MACHINE BOLT WITH NUT	7	1	52
83000	1" X 34" SQUARE HEAD MACHINE BOLT WITH NUT	7	1	52
83001	1" X 36" SQUARE HEAD MACHINE BOLT WITH NUT	7	1	52



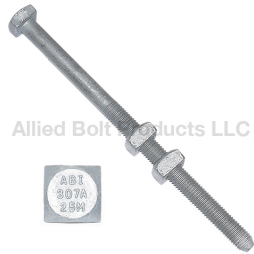
A Cable Suspension Bolt
5/8" A CABLE SUSPENSION BOLT

PART#	DESCRIPTION	PKG QTY	CTN QTY	CTN WT.
8280	5/8" X 8" A CABLE SUSPENSION BOLT	50	1	42
8281	5/8" X 10" A CABLE SUSPENSION BOLT	40	1	42
8282	5/8" X 12" A CABLE SUSPENSION BOLT	40	1	41
8283	5/8" X 14" A CABLE SUSPENSION BOLT	40	1	50
8284	5/8" X 16" A CABLE SUSPENSION BOLT	30	1	40
8285	5/8" X 18" A CABLE SUSPENSION BOLT	30	1	48
8286	5/8" X 20" A CABLE SUSPENSION BOLT	20	1	34
8287	5/8" X 22" A CABLE SUSPENSION BOLT	20	1	43
8288	5/8" X 24" A CABLE SUSPENSION BOLT	20	1	50
8289	5/8" X 26" A CABLE SUSPENSION BOLT	20	1	52
8290	5/8" X 28" A CABLE SUSPENSION BOLT	20	1	45



3/4" A CABLE SUSPENSION BOLT

PART#	DESCRIPTION	PKG QTY	CTN QTY	CTN WT.
8300	3/4" X 10" A CABLE SUSPENSION BOLT	30	1	34
8301	3/4" X 12" A CABLE SUSPENSION BOLT	20	1	30
8302	3/4" X 14" A CABLE SUSPENSION BOLT	20	1	34
8304	3/4" X 16" A CABLE SUSPENSION BOLT	20	1	40
8305	3/4" X 18" A CABLE SUSPENSION BOLT	20	1	46
8306	3/4" X 20" A CABLE SUSPENSION BOLT	20	1	52
8315	3/4" X 22" A CABLE SUSPENSION BOLT	10	1	30
8307	3/4" X 24" A CABLE SUSPENSION BOLT	10	1	30
8308	3/4" X 26" A CABLE SUSPENSION BOLT	10	1	42



1" A CABLE SUSPENSION BOLT

PART#	DESCRIPTION	PKG QTY	CTN QTY	CTN WT.
8160	1" X 12" A CABLE SUSPENSION BOLT	12	1	44
8161	1" X 14" A CABLE SUSPENSION BOLT	12	1	47
8162	1" X 16" A CABLE SUSPENSION BOLT	10	1	44
8163	1" X 18" A CABLE SUSPENSION BOLT	10	1	44



A CABLE SUSPENSION BOLT 316 STAINLESS STEEL
5/8" A CABLE SUSPENSION BOLT 316 STAINLESS STEEL

PART#	DESCRIPTION	PKG QTY	CTN QTY	CTN WT.
8280SS	5/8" X 8" A CABLE SUSPENSION BOLT 316 STAINLESS STEEL	50	1	47
8281SS	5/8" X 10" A CABLE SUSPENSION BOLT 316 STAINLESS STEEL	40	1	45
8291SS	5/8" x 11" A CABLE SUSPENSION BOLT 316 STAINLESS STEEL	40	1	46
8282SS	5/8" x 12" A CABLE SUSPENSION BOLT 316 STAINLESS STEEL	40	1	49
8283SS	5/8" X 14" A CABLE SUSPENSION BOLT 316 STAINLESS STEEL	40	1	55
8284SS	5/8" X 16" A CABLE SUSPENSION BOLT 316 STAINLESS STEEL	30	1	45



3/4" A CABLE SUSPENSION BOLT 316 STAINLESS STEEL

PART#	DESCRIPTION	PKG QTY	CTN QTY	CTN WT.
8300SS	3/4" X 10" A CABLE SUSPENSION BOLT 316 STAINLESS STEEL	30	1	48
8301SS	3/4" X 12" A CABLE SUSPENSION BOLT 316 STAINLESS STEEL	20	1	36
8302SS	3/4" X 14" A CABLE SUSPENSION BOLT 316 STAINLESS STEEL	20	1	40
8304SS	3/4" X 16" A CABLE SUSPENSION BOLT 316 STAINLESS STEEL	20	1	45



Double Arming Bolt

3/8" DOUBLE ARMING BOLT



Allied Bolt Products LLC

PART#	DESCRIPTION	PKG QTY	CTN QTY	CTN WT.
59750	3/8" X 8" DOUBLE ARMING BOLT	25	1	8

1/2" DOUBLE ARMING BOLT



Allied Bolt Products LLC

PART#	DESCRIPTION	PKG QTY	CTN QTY	CTN WT.
8390	1/2" X 6" DOUBLE ARMING BOLT	50	1	36
8395	1/2" X 8" DOUBLE ARMING BOLT	25	1	16
59752	1/2" X 12" DOUBLE ARMING BOLT	25	1	22
59755	1/2" X 18" DOUBLE ARMING BOLT	25	1	21
59757	1/2" X 22" DOUBLE ARMING BOLT	25	1	28

5/8" DOUBLE ARMING BOLT



Allied Bolt Products LLC

PART#	DESCRIPTION	PKG QTY	CTN QTY	CTN WT.
5950	5/8" X 10" DOUBLE ARMING BOLT	40	1	52
5952	5/8" X 12" DOUBLE ARMING BOLT	40	1	50
5954	5/8" X 14" DOUBLE ARMING BOLT	35	1	58
5956	5/8" X 16" DOUBLE ARMING BOLT	30	1	45
5958	5/8" X 18" DOUBLE ARMING BOLT	30	1	57
5960	5/8" X 20" DOUBLE ARMING BOLT	20	1	40
5962	5/8" X 22" DOUBLE ARMING BOLT	20	1	42
5964	5/8" X 24" DOUBLE ARMING BOLT	20	1	44
5966	5/8" X 26" DOUBLE ARMING BOLT	20	1	46
5968	5/8" X 28" DOUBLE ARMING BOLT	20	1	52
5970	5/8" X 30" DOUBLE ARMING BOLT	15	1	40
5972	5/8" X 32" DOUBLE ARMING BOLT	15	1	42
5974	5/8" X 34" DOUBLE ARMING BOLT	15	1	48
5976	5/8" X 36" DOUBLE ARMING BOLT	15	1	50
6009	5/8" x 40" DOUBLE ARMING BOLT	7	1	26
6705	5/8" x 42" DOUBLE ARMING BOLT	7	1	27
6706	5/8" X 44" DOUBLE ARMING BOLT	7	1	27
6707	5/8" X 46" DOUBLE ARMING BOLT	7	1	30
6105	5/8" X 48" DOUBLE ARMING BOLT	7	1	30
9997966	5/8" X 60" DOUBLE ARMING BOLT	5	1	24



3/4" DOUBLE ARMING BOLT



Allied Bolt Products LLC

PART#	DESCRIPTION	PKG QTY	CTN QTY	CTN WT.
59780	3/4" x 6" DOUBLE ARMING BOLT	25	1	24
5973	3/4" x 7" DOUBLE ARMING BOLT	25	1	28
5975	3/4" x 8" DOUBLE ARMING BOLT	25	1	28
5977	3/4" x 10" DOUBLE ARMING BOLT	30	1	40
5978	3/4" X 12" DOUBLE ARMING BOLT	20	1	40
5980	3/4" X 14" DOUBLE ARMING BOLT	20	1	44
5982	3/4" X 16" DOUBLE ARMING BOLT	20	1	48
5984	3/4" X 18" DOUBLE ARMING BOLT	20	1	50
5986	3/4" X 20" DOUBLE ARMING BOLT	20	1	60
5988	3/4" X 22" DOUBLE ARMING BOLT	10	1	32
5990	3/4" X 24" DOUBLE ARMING BOLT	10	1	32
5992	3/4" X 26" DOUBLE ARMING BOLT	10	1	38
5994	3/4" X 28" DOUBLE ARMING BOLT	10	1	37
5996	3/4" X 30" DOUBLE ARMING BOLT	10	1	38
5997	3/4" X 32" DOUBLE ARMING BOLT	10	1	42
5998	3/4" X 34" DOUBLE ARMING BOLT	10	1	43
5999	3/4" X 36" DOUBLE ARMING BOLT	10	1	45
6700	3/4" X 38" DOUBLE ARMING BOLT	5	1	25
6702	3/4" X 40" DOUBLE ARMING BOLT	5	1	25
6104	3/4" X 42" DOUBLE ARMING BOLT	5	1	26
6108	3/4" X 46" DOUBLE ARMING BOLT	5	1	30
9997967	3/4" X 60" DOUBLE ARMING BOLT	5	1	35

3/4" DOUBLE ARMING BOLT WITH 2 NUTS



Allied Bolt Products LLC

PART#	DESCRIPTION	PKG QTY	CTN QTY	CTN WT.
5986-2	3/4" X 20" DOUBLE ARMING BOLT WITH 2 NUTS	20	1	56
5988-2	3/4" X 22" DOUBLE ARMING BOLT WITH 2 NUTS	10	1	32
5990-2	3/4" X 24" DOUBLE ARMING BOLT WITH 2 NUTS	10	1	32
5992-2	3/4" X 26" DOUBLE ARMING BOLT WITH 2 NUTS	10	1	40
5994-2	3/4" X 28" DOUBLE ARMING BOLT WITH 2 NUTS	10	1	36
5997-2	3/4" X 32" DOUBLE ARMING BOLT WITH 2 NUTS	10	1	38
6702-2	3/4" X 40" DOUBLE ARMING BOLT WITH 2 NUTS	5	1	25
6104-2	3/4" X 42" DOUBLE ARMING BOLT WITH 2 NUTS	5	1	26
6108-2	3/4" X 46" DOUBLE ARMING BOLT WITH 2 NUTS	5	1	30

3/4" DOUBLE ARMING BOLT WITH 6 NUTS



Allied Bolt Products LLC

PART#	DESCRIPTION	PKG QTY	CTN QTY	CTN WT.
6104X6	3/4" X 42" DOUBLE ARMING BOLT WITH 6 NUTS	5	1	28
5996X6	3/4" X 30" DOUBLE ARMING BOLT WITH 6 NUTS	10	1	38
5999X6	3/4" X 36" DOUBLE ARMING BOLT WITH 6 NUTS	10	1	47



Allied Bolt Products LLC

7/8" DOUBLE ARMING BOLT

PART#	DESCRIPTION	PKG QTY	CTN QTY	CTN WT.
6710	7/8" X 12" DOUBLE ARMING BOLT	15	1	42
6711	7/8" X 14" DOUBLE ARMING BOLT	15	1	46
6712	7/8" X 16" DOUBLE ARMING BOLT	15	1	51
6713	7/8" X 18" DOUBLE ARMING BOLT	10	1	37
6714	7/8" X 20" DOUBLE ARMING BOLT	8	1	30
6715	7/8" x 22" DOUBLE ARMING BOLT	8	1	32
6716	7/8" x 24" DOUBLE ARMING BOLT	7	1	36
6717	7/8" X 26" DOUBLE ARMING BOLT	7	1	40
6718	7/8" X 28" DOUBLE ARMING BOLT	8	1	42
6719	7/8" x 30" DOUBLE ARMING BOLT	8	1	44
6720	7/8" x 32" DOUBLE ARMING BOLT	8	1	46
6721	7/8" x 34" DOUBLE ARMING BOLT	8	1	48
6722	7/8" x 36" DOUBLE ARMING BOLT	8	1	50
6723	7/8" X 38" DOUBLE ARMING BOLT	5	1	34
6724	7/8" X 40" DOUBLE ARMING BOLT	5	1	35
6725	7/8" X 42" DOUBLE ARMING BOLT	5	1	35
6726	7/8" X 44" DOUBLE ARMING BOLT	5	1	36
6727	7/8" X 46" DOUBLE ARMING BOLT	5	1	36
6728	7/8" X 48" DOUBLE ARMING BOLT	5	1	39
6736	7/8" x 50" DOUBLE ARMING BOLT	5	1	40



Allied Bolt Products LLC

1" DOUBLE ARMING BOLT

PART#	DESCRIPTION	PKG QTY	CTN QTY	CTN WT.
6750	1" x 12" DOUBLE ARMING BOLT	12	1	38
6751	1" x 14" DOUBLE ARMING BOLT	12	1	40
6752	1" x 16" DOUBLE ARMING BOLT	10	1	36
6753	1" x 18" DOUBLE ARMING BOLT	7	1	31
6754	1" x 20" DOUBLE ARMING BOLT	7	1	35
6755	1" x 22" DOUBLE ARMING BOLT	10	1	59
6756	1" x 24" DOUBLE ARMING BOLT	7	1	40
6757	1" x 26" DOUBLE ARMING BOLT	6	1	40
6758	1" x 28" DOUBLE ARMING BOLT	6	1	44
6759	1" x 30" DOUBLE ARMING BOLT	7	1	52
6760	1" x 32" DOUBLE ARMING BOLT	7	1	54
6762	1" x 36" DOUBLE ARMING BOLT	7	1	54



Allied Bolt Products LLC

B Cable Suspension Bolt

5/8" B CABLE SUSPENSION BOLT

PART#	DESCRIPTION	PKG QTY	CTN QTY	CTN WT.
8258	5/8" X 8" B CABLE SUSPENSION BOLT	50	1	58
8260	5/8" X 10" B CABLE SUSPENSION BOLT	40	1	46
8261	5/8" X 12" B CABLE SUSPENSION BOLT	40	1	52
8262	5/8" X 14" B CABLE SUSPENSION BOLT	35	1	52
8263	5/8" X 16" B CABLE SUSPENSION BOLT	30	1	48
8264	5/8" X 18" B CABLE SUSPENSION BOLT	30	1	54
8271	5/8" X 20" B CABLE SUSPENSION BOLT	10	1	19
8272	5/8" X 22" B CABLE SUSPENSION BOLT	20	1	42
8273	5/8" X 24" B CABLE SUSPENSION BOLT	20	1	44
8274	5/8" X 26" B CABLE SUSPENSION BOLT	20	1	48
8275	5/8" X 28" B CABLE SUSPENSION BOLT	20	1	50
8276	5/8" X 30" B CABLE SUSPENSION BOLT	15	1	42



Allied Bolt Products LLC

3/4" B CABLE SUSPENSION BOLT

PART#	DESCRIPTION	PKG QTY	CTN QTY	CTN WT.
8320	3/4" X 10" B CABLE SUSPENSION BOLT	30	1	32
8321	3/4" X 12" B CABLE SUSPENSION BOLT	20	1	38
8322	3/4" X 14" B CABLE SUSPENSION BOLT	20	1	42
8323	3/4" X 16" B CABLE SUSPENSION BOLT	20	1	46
8324	3/4" X 18" B CABLE SUSPENSION BOLT	20	1	52
8325	3/4" X 20" B CABLE SUSPENSION BOLT	20	1	50
8326	3/4" X 22" B CABLE SUSPENSION BOLT	10	1	28
8327	3/4" X 24" B CABLE SUSPENSION BOLT	10	1	30
8328	3/4" X 26" B CABLE SUSPENSION BOLT	10	1	32
8329	3/4" X 28" B CABLE SUSPENSION BOLT	10	1	36
8332	3/4" X 30" B CABLE SUSPENSION BOLT	10	1	40

Straight and Angled Guy Bolts



Allied Bolt Products LLC

5/8" STRAIGHT GUY BOLT

PART#	DESCRIPTION	PKG QTY	CTN QTY	CTN WT.
5804	5/8" X 8" STRAIGHT GUY BOLT	25	1	31
5805	5/8" X 10" STRAIGHT GUY BOLT	20	1	28
5806	5/8" X 12" STRAIGHT GUY BOLT	10	1	15
5807	5/8" X 14" STRAIGHT GUY BOLT	10	1	17
5808	5/8" X 16" STRAIGHT GUY BOLT	10	1	20
5809	5/8" X 18" STRAIGHT GUY BOLT	20	1	39
5852	5/8" X 20" STRAIGHT GUY BOLT	10	1	21



Allied Bolt Products LLC

3/4" STRAIGHT GUY BOLT

PART#	DESCRIPTION	PKG QTY	CTN QTY	CTN WT.
5857	3/4" X 10" STRAIGHT GUY BOLT	10	1	22
5814	3/4" X 12" STRAIGHT GUY BOLT	10	1	33
5813	3/4" X 14" STRAIGHT GUY BOLT	10	1	39
5812	3/4" X 16" STRAIGHT GUY BOLT	10	1	45
5858	3/4" X 18" STRAIGHT GUY BOLT	10	1	51
5859	3/4" X 20" STRAIGHT GUY BOLT	5	1	19



Allied Bolt Products LLC

5/8" ANGLED GUY BOLT

PART#	DESCRIPTION	PKG QTY	CTN QTY	CTN WT.
5831	5/8" X 8" ANGLED GUY BOLT	20	1	26
5832	5/8" X 10" ANGLED GUY BOLT	20	1	30
5834	5/8" X 12" ANGLED GUY BOLT	10	1	16
5836	5/8" X 14" ANGLED GUY BOLT	10	1	17
5838	5/8" X 16" ANGLED GUY BOLT	10	1	24
5839	5/8" X 18" ANGLED GUY BOLT	10	1	21
5860	5/8" X 20" ANGLED GUY BOLT	5	1	21
5853	5/8" X 22" ANGLED GUY BOLT	5	1	25



Allied Bolt Products LLC

3/4" ANGLED GUY BOLT

PART#	DESCRIPTION	PKG QTY	CTN QTY	CTN WT.
5824	3/4" X 10" ANGLED GUY BOLT	10	1	22
5825	3/4" X 12" ANGLED GUY BOLT	10	1	23
5826	3/4" X 14" ANGLED GUY BOLT	10	1	39
5815	3/4" X 16" ANGLED GUY BOLT	10	1	28
5816	3/4" X 18" ANGLED GUY BOLT	10	1	30
5817	3/4" X 20" ANGLED GUY BOLT	5	1	20
5818	3/4" X 22" ANGLED GUY BOLT	5	1	17



Allied Bolt Products LLC

1" ANGLED GUY BOLT

PART#	DESCRIPTION	PKG QTY	CTN QTY	CTN WT.
5840	1" X 12" ANGLED GUY BOLT	5	1	24
5841	1" X 14" ANGLED GUY BOLT	5	1	26
5842	1" X 16" ANGLED GUY BOLT	5	1	25
5843	1" X 18" ANGLED GUY BOLT	5	1	30

Cable Extension Bolt

CABLE BOLT EXTENSION



Allied Bolt Products LLC

PART#	DESCRIPTION	PKG QTY	CTN QTY	CTN WT.
2070	S CABLE BOLT EXTENSION (5/8"-11)	50	1	55
2071	C CABLE BOLT EXTENSION (3/4"-10)	25	1	35
2073	5/8" X 11" CABLE EXTENSION BOLT	25	1	59

Carriage Bolt

3/16" CARRIAGE BOLT



Allied Bolt Products LLC

PART#	DESCRIPTION	PKG QTY	CTN QTY	CTN WT.
279	3/16" X 1" CARRIAGE BOLT	100	32	42
278	3/16" X 1-1/4" CARRIAGE BOLT	100	32	48

1/4" CARRIAGE BOLT



Allied Bolt Products LLC

PART#	DESCRIPTION	PKG QTY	CTN QTY	CTN WT.
282	1/4" X 1-1/2" CARRIAGE BOLT	100	8	27
268	1/4" X 2" CARRIAGE BOLT	100	8	28
269	1/4" X 2-1/4" CARRIAGE BOLT	100	8	31
277	1/4" X 2-1/2" CARRIAGE BOLT	100	4	17

5/16" CARRIAGE BOLT



Allied Bolt Products LLC

PART#	DESCRIPTION	PKG QTY	CTN QTY	CTN WT.
7004	5/16" X 3" CARRIAGE BOLT	100	4	28



Allied Bolt Products, LLC

3/8" CARRIAGE BOLT

PART#	DESCRIPTION	PKG QTY	CTN QTY	CTN WT.
918	3/8" X 1-1/4" CARRIAGE BOLT	50	1	4
270	3/8" X 2-1/2" CARRIAGE BOLT	100	1	17
923	3/8" X 3" CARRIAGE BOLT	50	4	40
926	3/8" X 4" CARRIAGE BOLT	100	1	15
927	3/8" X 4-1/2" CARRIAGE BOLT	100	1	16
925	3/8" X 5" CARRIAGE BOLT	250	1	43
941	3/8" X 5-1/2" CARRIAGE BOLT	50	1	9
928	3/8" X 6" CARRIAGE BOLT	100	1	18
935	3/8" X 7" CARRIAGE BOLT	100	1	22
929	3/8" X 8" CARRIAGE BOLT	100	1	25
930	3/8" X 10" CARRIAGE BOLT	100	1	32
931	3/8" X 12" CARRIAGE BOLT	100	1	42
934	3/8" X 14" CARRIAGE BOLT	100	1	49



Allied Bolt Products, LLC

1/2" CARRIAGE BOLT

PART#	DESCRIPTION	PKG QTY	CTN QTY	CTN WT.
10002	1/2" X 1-1/2" CARRIAGE BOLT	500	1	65
10005	1/2" X 2-1/2" CARRIAGE BOLT	50	1	12
1499	1/2" X 4" CARRIAGE BOLT	50	1	15
890	1/2" X 4-3/4" CARRIAGE BOLT	50	1	16
1498	1/2" X 4-1/2" CARRIAGE BOLT	100	1	26
946	1/2" X 5" CARRIAGE BOLT	50	1	18
1490	1/2" X 5-1/2" CARRIAGE BOLT	50	1	17
7018	1/2" X 6" CARRIAGE BOLT	50	1	17
1493	1/2" X 7" CARRIAGE BOLT	50	1	22
1492	1/2" X 8" CARRIAGE BOLT	50	1	23
14910	1/2" X 10" CARRIAGE BOLT	50	1	29



Allied Bolt Products, LLC

5/8" CARRIAGE BOLT

PART#	DESCRIPTION	PKG QTY	CTN QTY	CTN WT.
952	5/8" x 8" CARRIAGE BOLT	50	1	36
9360	5/8" x 2-1/2" CARRIAGE BOLT	50	1	20
9364	5/8" x 4" CARRIAGE BOLT	50	1	24
1494	5/8" x 5" CARRIAGE BOLT	50	1	25
1495	5/8" x 5-1/2" CARRIAGE BOLT	50	1	50
936	5/8" X 6" CARRIAGE BOLT	50	1	32



Allied Bolt Products, LLC

3/4" CARRIAGE BOLT

PART#	DESCRIPTION	PKG QTY	CTN QTY	CTN WT.
9365	3/4" x 4" CARRIAGE BOLT	50	1	35



Allied Bolt Products, LLC

B Cable Suspension Screw

PART#	DESCRIPTION	PKG QTY	CTN QTY	CTN WT.
845	B CABLE SUSPENSION SCREW	50	1	58

GUARD ARM HOOK BOLT ASSEMBLY



Allied Bolt Products LLC

PART#	DESCRIPTION	PKG QTY	CTN QTY	CTN WT.
8550	1/2" GUARD ARM HOOK BOLT ASSEMBLY	50	1	20

C CABLE SUSPENSION BOLT

C CABLE SUSPENSION BOLT



Allied Bolt Products LLC

PART#	DESCRIPTION	PKG QTY	CTN QTY	CTN WT.
5181	5/8" X 2-1/2" C CABLE SUSPENSION BOLT	50	1	20

Support Braces

Alley Arm Back Brace

ALLEY ARM BACK BRACE



Allied Bolt Products LLC

PART#	DESCRIPTION	PKG QTY	CTN QTY	CTN WT.
8472	50" ALLEY ARM BACK BRACE	1	1	8

Alley Arm Brace

ALLEY ARM BRACE/ ANGLE STEEL

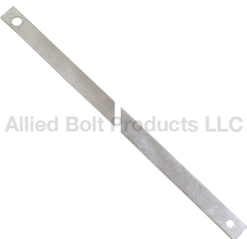


Allied Bolt Products LLC

PART#	DESCRIPTION	PKG QTY	CTN QTY	CTN WT.
900031	5' ALLEY ARM BRACE 1-3/4" X 1-3/4" X 3/16" ANGLE STEEL	1	1	13
900032	7' ALLEY ARM BRACE 1-3/4" X 1-3/4" X 3/16" ANGLE STEEL	1	1	18
900033	10' ALLEY ARM BRACE 2" X 2" X 3/16" ANGLE STEEL	1	1	36

Crossarm Brace

CROSSARM BRACE



Allied Bolt Products LLC

PART#	DESCRIPTION	PKG QTY	CTN QTY	CTN WT.
5096	20" CROSSARM BRACE	20	1	46
5092	26" CROSSARM BRACE	20	1	38
5091	28" CROSSARM BRACE	20	1	49
5070	30" CROSSARM BRACE	20	1	43
5093	32" CROSSARM BRACE	20	1	46

Guard Arm Brace

Guard Arm Brace



Allied Bolt Products LLC

PART#	DESCRIPTION	PKG QTY	CTN QTY	CTN WT.
5057	GUARD ARM BRACE	25	1	39

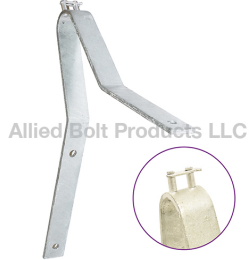
B Pole Brace



PART#	DESCRIPTION	PKG QTY	CTN QTY	CTN WT.
2090	B POLE BRACE	2	1	16

Wall and Frame Brackets

B Wall Bracket Assembly



B Wall Bracket Assembly

PART#	DESCRIPTION	PKG QTY	CTN QTY	CTN WT.
851	B WALL BRACKET	5	1	16

C Wall Bracket Assembly



C Wall Bracket Assembly

PART#	DESCRIPTION	PKG QTY	CTN QTY	CTN WT.
1440	C WALL BRACKET ASSEMBLY	5	1	35

D Wall Bracket



D Wall Bracket

PART#	DESCRIPTION	PKG QTY	CTN QTY	CTN WT.
842	D WALL BRACKET	10	1	8

E Wall Bracket



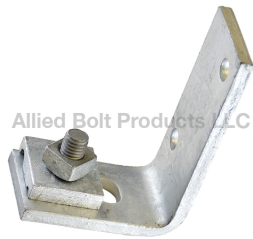
PART#	DESCRIPTION	PKG QTY	CTN QTY	CTN WT.
863	E WALL BRACKET	30	1	46

L & S Corner Bracket



CORNER BRACKET

PART#	DESCRIPTION	PKG QTY	CTN QTY	CTN WT.
883	L CORNER BRACKET	50	1	57
884	S CORNER BRACKET	50	1	36



L & S Wall Bracket

WALL BRACKET

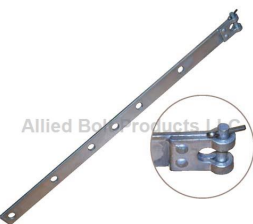
PART#	DESCRIPTION	PKG QTY	CTN QTY	CTN WT.
881	S WALL BRACKET	25	1	41
882	L WALL BRACKET	25	1	75



B Beam Clamp

BEAM CLAMP

PART#	DESCRIPTION	PKG QTY	CTN QTY	CTN WT.
444	B BEAM CLAMP	25	1	19



B Corner Wall Strap

B CORNER WALL STRAP

PART#	DESCRIPTION	PKG QTY	CTN QTY	CTN WT.
1407	B CORNER WALL STRAP	25	1	36



Wall Strap

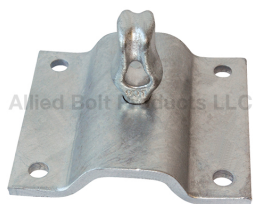
WALL STRAP

PART#	DESCRIPTION	PKG QTY	CTN QTY	CTN WT.
5065	1/2" WALL STRAP	10	1	27
5066	5/8" WALL STRAP	5	1	22
5068	SHORT 5/8" WALL STRAP	10	1	27



U WALL STRAP

PART#	DESCRIPTION	PKG QTY	CTN QTY	CTN WT.
5067	"U" WALL STRAP	5	10	50



WALL PLATE STRAP ASSEMBLY

PART#	DESCRIPTION	PKG QTY	CTN QTY	CTN WT.
901	WALL PLATE STRAP ASSEMBLY	10	1	61

Extension Brackets



CONDUIT RISER BRACKET

CONDUIT RISER BRACKET

PART#	DESCRIPTION	PKG QTY	CTN QTY	CTN WT.
9017	CONDUIT RISER BRACKET	4	1	8



DEADEND BRACKET

DEADEND BRACKET

PART#	DESCRIPTION	PKG QTY	CTN QTY	CTN WT.
7395	DEADEND BRACKET ASSEMBLY WITH 4 BRACKETS	1	1	24



Cable Extension Bracket

CABLE EXTENSION BRACKET

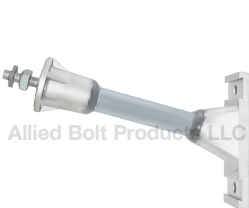
PART#	DESCRIPTION	PKG QTY	CTN QTY	CTN WT.
1188	17-1/2" TO 26" CABLE EXTENSION BRACKET	1	1	30
1189	26-1/2" TO 44-1/2" CABLE EXTENSION BRACKET	1	1	60



EXTENSION BRACKET

CABLE EXTENSION ARM

PART#	DESCRIPTION	PKG QTY	CTN QTY	CTN WT.
7584	15" EXTENSION BRACKET	2	1	14
7585	18" EXTENSION BRACKET	2	1	17
7586	24" EXTENSION BRACKET	2	1	20



Fiberglass Communication Standoff Bracket

FIBERGLASS COMMUNICATION STANDOFF BRACKET

PART#	DESCRIPTION	PKG QTY	CTN QTY	CTN WT.
4869	12" FIBERGLASS COMMUNICATION STANDOFF BRACKET	2	1	10
4870	15" FIBERGLASS COMMUNICATION STANDOFF BRACKET	2	1	11
4871	18" FIBERGLASS COMMUNICATION STANDOFF BRACKET	2	1	12
4872	21" FIBERGLASS COMMUNICATION STANDOFF BRACKET	2	1	13
4874	24" FIBERGLASS COMMUNICATION STANDOFF BRACKET	2	1	14
4875	30" FIBERGLASS COMMUNICATION STANDOFF BRACKET	2	1	16
4876	36" FIBERGLASS COMMUNICATION STANDOFF BRACKET	2	1	17

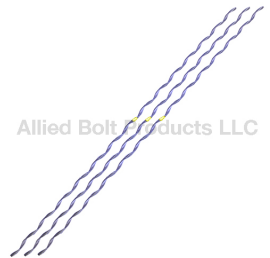
Wire Formed Hardware



Guy Wire Deadend

Guy Wire Deadend

PART#	DESCRIPTION	PKG QTY	CTN QTY	CTN WT.
AB110040	1/4" Guy Deadend Grip Steel Class B Coated - Yellow	50	1	36
AB110060	5/16" Guy Deadend Grip Steel Class B Coated - Black	30	1	24
AB110070	3/8" Guy Deadend Grip Steel Class B Coated - Orange	25	1	28
AB110080	7/16" Guy Deadend Grip Steel Class B Coated - Green	20	1	31



Guy Wire Splice

Guy Wire Splice

PART#	DESCRIPTION	PKG QTY	CTN QTY	CTN WT.
ABS1104	1/4" Strand Splice 35" Long Class B	50	1	27
ABS1106	5/16" Strand Splice 42" Long Class B	50	1	40
ABS1107	3/8" Strand Splice 50" Long Class B	25	1	32
ABS1108	7/16" Strand Splice 50" Long Class B	20	1	30

Clamps and Markers For Guying

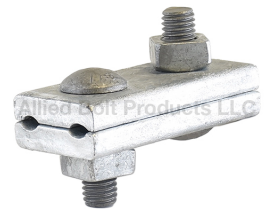
Guy Clamp

ONE BOLT GUY CLAMP



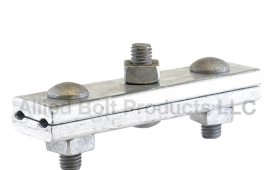
PART#	DESCRIPTION	PKG QTY	CTN QTY	CTN WT.
5055	1/2" ONE BOLT GUY CLAMP 1-7/16" X 1-9/16" PLATES	50	1	32

TWO BOLT GUY CLAMP



PART#	DESCRIPTION	PKG QTY	CTN QTY	CTN WT.
5058	1/2" TWO BOLT GUY CLAMP 3-3/8" X 1-9/16" PLATES	50	1	69

THREE BOLT GUY CLAMP



PART#	DESCRIPTION	PKG QTY	CTN QTY	CTN WT.
5059	1/2" THREE BOLT GUY CLAMP 5-7/8" X 1-9/16" PLATES	25	1	42
5056	5/8" THREE BOLT GUY CLAMP 6" X 1-21/32" PLATES	25	1	55

B Strand Serving Sleeve

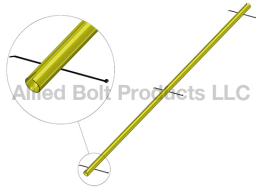
STRAND SERVING SLEEVE



PART#	DESCRIPTION	PKG QTY	CTN QTY	CTN WT.
847	1/4" STRAND SERVING SLEEVE	100	4	11
848	5/16" STRAND SERVING SLEEVE	50	4	12
849	3/8" STRAND SERVING SLEEVE	50	4	10
850	7/16" STRAND SERVING SLEEVE	50	1	6

Guy Markers

FULL ROUND GUY MARKER W/ CABLE TIES



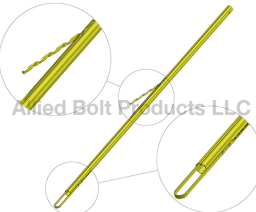
PART#	DESCRIPTION	PKG QTY	CTN QTY	CTN WT.
11402	1-1/4" X 8' FULL ROUND YELLOW GUY MARKER WITH CABLE TIE	25	1	32
11404	1-1/2" X 8' FULL ROUND YELLOW GUY MARKER WITH CABLE TIE	25	1	33
11406	2" X 8' FULL ROUND YELLOW GUY MARKER WITH CABLE TIE	15	1	49

"B" PROFILE GUY MARKER W/ HELICAL PIG TAIL



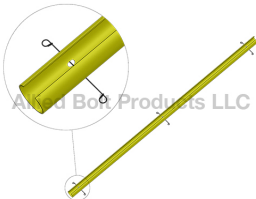
PART#	DESCRIPTION	PKG QTY	CTN QTY	CTN WT.
11401	1-1/4" X 8' "B" PROFILE GUY MARKER W/ HELICAL PIG TAIL	25	1	32
11415	1-1/2" X 8' "B" PROFILE GUY MARKER W/ HELICAL PIG TAIL	25	1	35
11417	2" X 8' "B" PROFILE GUY MARKER W/ HELICAL PIG TAIL	25	1	49

"B" PROFILE W/ HELICAL PIG TAIL AND ANCHOR ROD LOOP



PART#	DESCRIPTION	PKG QTY	CTN QTY	CTN WT.
11414	1-1/4" X 8' "B" PROFILE W/ HELICAL PIG TAIL AND ANCHOR ROD LOOP	25	1	32
11418	2" X 8' "B" PROFILE W/ HELICAL PIG TAIL AND ANCHOR ROD LOOP	25	1	49

TWO THIRD ROUND YELLOW GUY MARKER W/ 3 WIRE TIES



PART#	DESCRIPTION	PKG QTY	CTN QTY	CTN WT.
11437	2-1/2" X 7' TWO THIRD ROUND YELLOW GUY MARKER W/ 3 WIRE TIES	15	1	18
12011	2" X 8' TWO THIRD ROUND YELLOW GUY MARKER W/ 3 WIRE TIES	15	1	19

B Guy Rod Clamp



PART#	DESCRIPTION	PKG QTY	CTN QTY	CTN WT.
2105	B GUY ROD CLAMP	5	1	29

Strand Dead-End

EHS STRAND DEADEND



PART#	DESCRIPTION	PKG QTY	CTN QTY	CTN WT.
AB520000	1/4" EHS STRAND DEAD-END YELLOW	25	1	14
AB520100	5/16" EHS STRAND DEAD-END BLACK	25	1	22
AB520200	3/8" EHS STRAND DEAD-END ORANGE	25	1	36
AB520300	7/16" EHS STRAND DEAD-END GREEN	25	1	50
AB520400	1/2" EHS STRAND DEADEND BLUE	25	1	54

ALL GRADE STRAND DEADEND



PART#	DESCRIPTION	PKG QTY	CTN QTY	CTN WT.
AB509900	3/16 ALL GRADE STRAND DEADEND ORANGE	50	1	22
AB510000	1/4" ALL GRADE STRAND DEADEND YELLOW	50	1	19
AB510100	5/16" ALL GRADE STRAND DEADEND BLACK	50	1	34
AB510200	3/8" ALL GRADE STRAND DEADEND ORANGE	50	1	53

LONG BAIL EHS STRAND DEADEND



PART#	DESCRIPTION	PKG QTY	CTN QTY	CTN WT.
AB520000L	1/4" LONG BAIL EHS STRAND DEADEND YELLOW (OVERALL LENGTH 13.625")	25	1	17
AB520100L	5/16" LONG BAIL EHS STRAND DEADEND BLACK (OVERALL LENGTH 15.67")	25	1	24
AB520200L	3/8" LONG BAIL EHS STRAND DEADEND ORANGE (OVERALL LENGTH 17.36")	25	1	40
AB520300L	7/16" LONG BAIL EHS STRAND DEADEND GREEN (OVERALL LENGTH 18.47")	25	1	50

LONG BAIL ALL GRADE STRAND DEADEND



PART#	DESCRIPTION	PKG QTY	CTN QTY	CTN WT.
AB510000L	1/4" LONG BAIL ALL GRADE STRAND DEADEND YELLOW (OVERALL LENGTH 12.75")	50	1	23
AB510100L	5/16" LONG BAIL ALL GRADE STRAND DEADEND BLACK (OVERALL LENGTH 13.42")	50	1	40
AB510200L	3/8" LONG BAIL ALL GRADE STRAND DEADEND ORANGE (OVERALL LENGTH 17.17")	50	1	56

EXTRA LONG BAIL ALL GRADE STRAND DEADEND



PART#	DESCRIPTION	PKG QTY	CTN QTY	CTN WT.
AB510100LL	5/16" EXTRA LONG BAIL ALL GRADE STRAND DEADEND BLACK (OVERALL LENGTH 24")	50	1	50
AB510200LL	3/8" EXTRA LONG BAIL ALL GRADE STRAND DEADEND ORANGE (OVERALL LENGTH 24")	50	1	56

Strand Connectors

Guy Strain Insulator

Porcelain Guy Strain Insulator



PART#	DESCRIPTION	PKG QTY	CTN QTY	CTN WT.
972	3/8" PORCELAIN GUY STRAIN INSULATOR - 10,000 LOAD ANSI 54-1	50	1	53
973	1/2" PORCELAIN GUY STRAIN INSULATOR - 12,000 LOAD ANSI 54-2	25	1	42
974	5/8" PORCELAIN GUY STRAIN INSULATOR - 20,000 LOAD ANSI 54-4	12	1	55

B Strand Connector

B Strand Connector



PART#	DESCRIPTION	PKG QTY	CTN QTY	CTN WT.
2181	B STRAND CONNECTOR	10	1	14

B Strand Pole Connector



B Strand Pole Connector

PART#	DESCRIPTION	PKG QTY	CTN QTY	CTN WT.
2175	B STRAND POLE CONNECTOR	10	1	38

Strand Splice



EHS STRAND SPLICE

PART#	DESCRIPTION	PKG QTY	CTN QTY	CTN WT.
AB504000	1/4" EHS STRAND SPLICE	50	1	27
AB504100	5/16" EHS STRAND SPLICE	50	1	36
AB504200	3/8" EHS STRAND SPLICE	25	1	30
AB504300	7/16" EHS STRAND SPLICE	25	1	38
AB504400	1/2" EHS STRAND SPLICE	25	1	42

ALL GRADE STRAND SPLICE



PART#	DESCRIPTION	PKG QTY	CTN QTY	CTN WT.
AB500000	1/4" STRAND SPLICE ALL GRADE	50	1	16
AB500100	5/16" STRAND SPLICE ALL GRADE	50	1	30
AB500200	3/8" STRAND SPLICE ALL GRADE	50	1	22

STRAND REDUCING SPLICE



STRAND REDUCING SPLICE

PART#	DESCRIPTION	PKG QTY	CTN QTY	CTN WT.
AB508600	1/4" TO 3/16" STRAND REDUCING SPLICE	50	1	50
AB508700	5/16" TO 1/4" STRAND REDUCING SPLICE	50	1	50
AB502200	3/8" TO 5/16" STRAND REDUCING SPLICE	50	1	50
AB502300	7/16" TO 3/8" STRAND REDUCING SPLICE	50	1	50

Strand Tie Strap



STRAIGHT STRAND TIE STRAP

PART#	DESCRIPTION	PKG QTY	CTN QTY	CTN WT.
8188	14" STRAIGHT STRAND TIE STRAP	25	1	36

BENT STRAND TIE STRAP



PART#	DESCRIPTION	PKG QTY	CTN QTY	CTN WT.
8189	20" BENT STRAND TIE STRAP	25	1	45
8190	26" BENT STRAND TIE STRAP	25	1	57

Crossover Clamp

CROSSOVER CLAMP



PART#	DESCRIPTION	PKG QTY	CTN QTY	CTN WT.
4065	1/4"-3/8" CROSSOVER CLAMP	25	1	40

CROSSOVER CLAMP



PART#	DESCRIPTION	PKG QTY	CTN QTY	CTN WT.
4069	1/4" CROSSOVER CLAMP	50	1	34

Eyelets

Straight Single Strand Eyelet

STRAIGHT SINGLE STRAND EYELET



PART#	DESCRIPTION	PKG QTY	CTN QTY	CTN WT.
2050	5/8" STRAIGHT SINGLE STRAND EYELET	25	1	29
2051	3/4" STRAIGHT SINGLE STRAND EYELET	25	1	31

Single Strand Angled Eyelet

ANGLED SINGLE STRAND EYELET



PART#	DESCRIPTION	PKG QTY	CTN QTY	CTN WT.
2060	5/8" ANGLED SINGLE STRAND EYELET	25	1	36
2061	3/4" ANGLED SINGLE STRAND EYELET	25	1	35

Eye Nuts

Single and Dual Forged Eye Nut

SINGLE FORGED EYE NUT



PART#	DESCRIPTION	PKG QTY	CTN QTY	CTN WT.
5050	5/8"-11 SINGLE FORGED EYE NUT	50	1	40
5051	3/4"-10 SINGLE FORGED EYE NUT	50	1	41



DUAL FORGED EYE NUT

PART#	DESCRIPTION	PKG QTY	CTN QTY	CTN WT.
5045	5/8"-11 DUAL STRAND EYE NUT	25	1	30
5046	3/4"-10 DUAL FORGED EYE NUT	25	1	44

Allied Bolt Products, LLC

Suspension Clamps and Straps

Straight Cable Suspension Clamp

CABLE SUSPENSION CLAMP



PART#	DESCRIPTION	PKG QTY	CTN QTY	CTN WT.
5080	B CABLE SUSPENSION CLAMP FOR 5/8" THRU BOLTS	25	1	43
5082	SUSPENSION CLAMP WITH FLAT KEEPER PLATE FOR 5/8" THRU BOLTS	25	1	41
5087	THREE BOLT CABLE SUSPENSION CLAMP FOR 3/4" THRU BOLTS	25	1	47

Allied Bolt Products, LLC

ONE BOLT CABLE SUSPENSION CLAMP



PART#	DESCRIPTION	PKG QTY	CTN QTY	CTN WT.
5074	ONE BOLT CABLE SUSPENSION CLAMP FOR 5/8" THRU BOLTS	50	1	38

Allied Bolt Products, LLC

Angle Suspension Clamp

B CORNER SUSPENSION CLAMP



PART#	DESCRIPTION	PKG QTY	CTN QTY	CTN WT.
5081	B CORNER SUSPENSION CLAMP	10	1	36

Allied Bolt Products, LLC

CORNER SUSPENSION CLAMP



PART#	DESCRIPTION	PKG QTY	CTN QTY	CTN WT.
5083	CORNER SUSPENSION CLAMP FOR 5/8" THRU BOLT	10	1	21
5088	CORNER SUSPENSION CLAMP FOR 3/4" THRU BOLT	10	1	47
5089	CORNER SUSPENSION CLAMP FOR 1" THRU BOLT	10	1	51

Allied Bolt Products, LLC

C Cable Clamp

C CABLE CLAMP



PART#	DESCRIPTION	PKG QTY	CTN QTY	CTN WT.
4080	C CABLE CLAMP	16	1	39

Allied Bolt Products, LLC

STRAIGHT CABLE SUSPENSION CLAMP STAINLESS STEEL

CABLE SUSPENSION CLAMP



PART#	DESCRIPTION	PKG QTY	CTN QTY	CTN WT.
5080SS	B CABLE SUSPENSION CLAMP STAINLESS STEEL	25	1	46

Three Bolt Suspension Clamp For Figure 8 Cable

3-BOLT SUSPENSION CLAMP FOR FIGURE 8 CABLE



PART#	DESCRIPTION	PKG QTY	CTN QTY	CTN WT.
7026	3-BOLT SUSPENSION CLAMP FOR FIGURE 8 CABLE (.109-.134")	25	1	18
7027	3-BOLT SUSPENSION CLAMP FOR FIGURE 8 CABLE (.148-.250")	25	1	18

Reinforcing Strap

REINFORCING STRAPS



PART#	DESCRIPTION	PKG QTY	CTN QTY	CTN WT.
102	C REINFORCING STRAP	100	1	51
103	S REINFORCING STRAP	100	1	31
8003	D REINFORCING STRAP	100	1	42

REINFORCING BRACE



PART#	DESCRIPTION	PKG QTY	CTN QTY	CTN WT.
8000	2" REINFORCING BRACE	25	1	22
8001	1-3/8" REINFORCING BRACE	25	1	19

Corner Attachment Bracket

CORNER ATTACHMENT BRACKET



PART#	DESCRIPTION	PKG QTY	CTN QTY	CTN WT.
5086	CORNER ATTACHMENT BRACKET	25	1	36

Tangent Support Clamp

TANGENT SUPPORT CLAMP



PART#	DESCRIPTION	PKG QTY	CTN QTY	CTN WT.
5900	TANGENT SUPPORT CLAMP .109" TO .134" FOR 1/2" BOLT	1	50	18
5902	TANGENT SUPPORT CLAMP .109" TO .134" FOR 5/8" BOLT	1	50	16
5904	TANGENT SUPPORT CLAMP .148" TO .250" FOR 5/8" BOLT	1	25	9

J HOOK FOR TANGENT SUPPORT



PART#	DESCRIPTION	PKG QTY	CTN QTY	CTN WT.
5895	J HOOK FOR TANGENT SUPPORT (1/2") FOR 1/2" BOLT	50	1	10
5897	J HOOK FOR TANGENT SUPPORT (5/8") FOR 5/8" BOLT	50	1	10

Allied Bolt Products LLC

Messenger Support Clamp



MESSENGER SUPPORT CLAMP

PART#	DESCRIPTION	PKG QTY	CTN QTY	CTN WT.
10075	MESSENGER SUPPORT CLAMP	100	1	38

Allied Bolt Products LLC

AERIAL MESSENGER CLAMP WITH HOOK

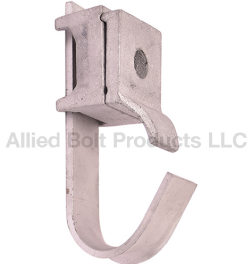


THREE BOLT AERIAL CABLE MESSENGER CLAMP W/ HOOK

PART#	DESCRIPTION	PKG QTY	CTN QTY	CTN WT.
8345	THREE BOLT AERIAL CABLE MESSENGER CLAMP W/ HOOK	10	1	40

Allied Bolt Products LLC

SINGLE BOLT AERIAL CABLE MESSENGER CLAMP W/ HOOK



PART#	DESCRIPTION	PKG QTY	CTN QTY	CTN WT.
8346	SINGLE BOLT AERIAL CABLE MESSENGER CLAMP W/ HOOK	20	1	40

Allied Bolt Products LLC

B Placing Hook

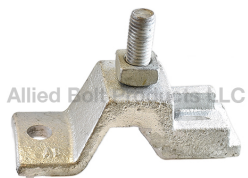


B Placing Hook

PART#	DESCRIPTION	PKG QTY	CTN QTY	CTN WT.
222	B PLACING HOOK	10	1	24

Allied Bolt Products LLC

B Support Clamp



B Support Clamp

PART#	DESCRIPTION	PKG QTY	CTN QTY	CTN WT.
2510	B SUPPORT CLAMP	5	1	10

Allied Bolt Products LLC



Poleline Telecommunicaton Hardware Catalog

January 30, 2020



Allied Bolt Products LLC

POLY B CABLE GUARD

1/2" B CABLE GUARD

PART#	DESCRIPTION	PKG QTY	CTN QTY	CTN WT.
9009-58	1/2" X 8" B CABLE GUARD	300	1	150



Allied Bolt Products LLC

1" B CABLE GUARD

PART#	DESCRIPTION	PKG QTY	CTN QTY	CTN WT.
9009-18	1" X 8" B CABLE GUARD	60	1	60
9009-110	1" X 10" B CABLE GUARD	90	1	8
9009-130	1" X 30" B CABLE GUARD	30	1	7



Allied Bolt Products LLC

1-1/2" B CABLE GUARD

PART#	DESCRIPTION	PKG QTY	CTN QTY	CTN WT.
9009-158	1-1/2" X 8" B CABLE GUARD	25	1	35



Allied Bolt Products LLC

2" B CABLE GUARD

PART#	DESCRIPTION	PKG QTY	CTN QTY	CTN WT.
9009-24	2" X 4" B CABLE GUARD	30	1	29
9009-28	2" X 8" B CABLE GUARD	15	1	57

U Guards and Ground Wire Molding



Allied Bolt Products LLC

U Cable Guard

U CABLE GUARD - TYPE 1

PART#	DESCRIPTION	PKG QTY	CTN QTY	CTN WT.
9006-U0	U-0 CABLE GUARD 8FT	5	1	35
9006-U1	U-1 CABLE GUARD 8FT	5	1	45
9006-U2	U-2 CABLE GUARD 8FT	5	1	60
9006-U3	U-3 CABLE GUARD 8FT	2	1	28
9006-U4	U-4 CABLE GUARD 8FT	2	1	36
9006-U05	U-05 CABLE GUARD 5FT	5	1	15
9006-U15	U-15 CABLE GUARD 5FT	5	1	20
9006-U25	U-25 CABLE GUARD 5FT	5	1	43
9006-U35	U-35 CABLE GUARD 5FT	2	1	31
9006-U45	U-45 CABLE GUARD 5FT	2	1	24



U CABLE GUARD - TYPE 2

PART#	DESCRIPTION	PKG QTY	CTN QTY	CTN WT.
9006-U1A	U-1A CABLE GUARD 8 FT	5	1	45
9006-U1A5	U-1A5 CABLE GUARD 5 FT	5	1	29

Allied Bolt Products LLC



U Cable Guard Strap

U CABLE GUARD STRAP

PART#	DESCRIPTION	PKG QTY	CTN QTY	CTN WT.
9005-U0	U CABLE GUARD STRAP SZ 0	50	4	14
9005-U1	U CABLE GUARD STRAP SZ 1	25	4	12
9005-U1A	U CABLE GUARD STRAP SZ 1A	25	4	14
9005-U2	U CABLE GUARD STRAP SZ 2	25	8	40
9005-U3	U CABLE GUARD STRAP SZ 3	25	1	13
9005-U4	U CABLE GUARD STRAP SZ 4	25	1	16
9005-U6	U CABLE GUARD STRAP SZ 6	25	1	20
9005-U8	U CABLE GUARD STRAP SZ 8	25	1	22

Ground Wire Molding

GROUND WIRE MOLDING

PART#	DESCRIPTION	PKG QTY	CTN QTY	CTN WT.
11400	1/2" X 8' GROUND WIRE MOLDING BLACK	125	1	50
11400GY	1/2" X 8' GROUND WIRE MOLDING GRAY	125	1	52
11441	5/8" X 8' GROUND WIRE MOLDING BLACK	80	1	46
11442	3/4" X 8' GROUND WIRE MOLDING BLACK	50	1	18
11442GY	3/4" X 8' GROUND WIRE MOLDING GRAY	50	1	68
11443	1" X 8' GROUND WIRE MOLDING BLACK	25	1	15

Allied Bolt Products LLC



POLY CABLE GUARD

POLYETHYLENE U CABLE GUARD

PART#	DESCRIPTION	PKG QTY	CTN QTY	CTN WT.
9001-15	1" X 5' POLYETHYLENE U CABLE GUARD	6	1	60
9001-18	1" X 8' POLYETHYLENE U CABLE GUARD	6	1	60
9001-110	1" X 10' POLYETHYLENE U CABLE GUARD	6	1	60
9001-25	2" X 5' POLYETHYLENE U CABLE GUARD	6	1	60
9001-28	2" X 8' POLYETHYLENE U CABLE GUARD	6	1	60
9001-210	2" X 10' POLYETHYLENE U CABLE GUARD	6	1	60
9001-35	3" X 5' POLYETHYLENE U CABLE GUARD	6	1	60
9001-38	3" X 8' POLYETHYLENE U CABLE GUARD	6	1	60
9001-310	3" X 10' POLYETHYLENE U CABLE GUARD	6	1	60
9001-45	4" X 5' POLYETHYLENE U CABLE GUARD	6	1	60
9001-48	4" X 8' POLYETHYLENE U CABLE GUARD	6	1	60
9001-410	4" X 10' POLYETHYLENE U CABLE GUARD	6	1	60
9001-55	5" X 5' POLYETHYLENE U CABLE GUARD	6	1	60
9001-58	5" X 8' POLYETHYLENE U CABLE GUARD	6	1	60
9001-510	5" X 10' POLYETHYLENE U CABLE GUARD	6	1	60
9001-65	6" X 5' POLYETHYLENE U CABLE GUARD	6	1	60
9001-68	6" X 8' POLYETHYLENE U CABLE GUARD	6	1	60
9001-610	6" X 10' POLYETHYLENE U CABLE GUARD	6	1	60

Allied Bolt Products LLC



STEEL FLANGED U GUARD HOT DIP GALVANIZED

1" STEEL FLANGED U GUARD HOT DIP GALVANIZED

Allied Bolt Products LLC

PART#	DESCRIPTION	PKG QTY	CTN QTY	CTN WT.
9004-110	1" X 10' STEEL FLANGED U GUARD HOT DIP GALVANIZED	1	1	9

1-1/4" STEEL FLANGED U GUARD HOT DIP GALVANIZED

Allied Bolt Products LLC

PART#	DESCRIPTION	PKG QTY	CTN QTY	CTN WT.
9004-1145	1-1/4" X 5' STEEL FLANGED U GUARD HOT DIP GALVANIZED	1	1	6
9004-1148	1-1/4" X 8' STEEL FLANGED U GUARD HOT DIP GALVANIZED	1	1	10

2" STEEL FLANGED U GUARD HOT DIP GALVANIZED

Allied Bolt Products LLC

PART#	DESCRIPTION	PKG QTY	CTN QTY	CTN WT.
9004-25	2" X 5' STEEL FLANGED U GUARD HOT DIP GALVANIZED	1	1	9
9004-28	2" X 8' STEEL FLANGED U GUARD HOT DIP GALVANIZED	1	1	14
9004-210	2" X 10' STEEL FLANGED U GUARD HOT DIP GALVANIZED	1	1	18

3" STEEL FLANGED U GUARD HOT DIP GALVANIZED

Allied Bolt Products LLC

PART#	DESCRIPTION	PKG QTY	CTN QTY	CTN WT.
9004-35	3" X 5' STEEL FLANGED U GUARD HOT DIP GALVANIZED	1	1	12
9004-38	3" X 8' STEEL FLANGED U GUARD HOT DIP GALVANIZED	1	1	19
9004-310	3" X 10' STEEL FLANGED U GUARD HOT DIP GALVANIZED	1	1	24

4" STEEL FLANGED U GUARD HOT DIP GALVANIZED

Allied Bolt Products LLC

PART#	DESCRIPTION	PKG QTY	CTN QTY	CTN WT.
9004-45	4" X 5' STEEL FLANGED U GUARD HOT DIP GALVANIZED	1	1	15
9004-48	4" X 8' STEEL FLANGED U GUARD HOT DIP GALVANIZED	1	1	27
9004-410	4" X 10' STEEL FLANGED U GUARD HOT DIP GALVANIZED	1	1	34

5" STEEL FLANGED U GUARD HOT DIP GALVANIZED

Allied Bolt Products LLC

PART#	DESCRIPTION	PKG QTY	CTN QTY	CTN WT.
9004-55	5" X 5' STEEL FLANGED U GUARD HOT DIP GALVANIZED	1	1	18
9004-58	5" X 8' STEEL FLANGED U GUARD HOT DIP GALVANIZED	1	1	28
9004-510	5" X 10' STEEL FLANGED U GUARD HOT DIP GALVANIZED	1	1	36



6" STEEL FLANGED U GUARD HOT DIP GALVANIZED



Allied Bolt Products LLC

PART#	DESCRIPTION	PKG QTY	CTN QTY	CTN WT.
9004-65	6" X 5' STEEL FLANGED U GUARD HOT DIP GALVANIZED	1	1	22

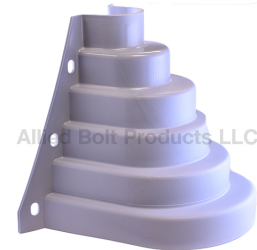
7" STEEL FLANGED U GUARD HOT DIP GALVANIZED



Allied Bolt Products LLC

PART#	DESCRIPTION	PKG QTY	CTN QTY	CTN WT.
9004-75	7" X 5' STEEL FLANGED U GUARD HOT DIP GALVANIZED	1	1	25

Plastic U-Guard Adaptor



Allied Bolt Products LLC

PLASTIC U-GUARD ADAPTOR

PART#	DESCRIPTION	PKG QTY	CTN QTY	CTN WT.
9001	PLASTIC U-GUARD ADAPTOR FITS 2"-6" PVC U GUARDS	10	1	7

Drive Hooks

Drive Hook



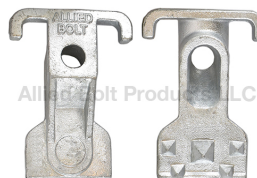
Allied Bolt Products LLC

DRIVE HOOK

PART#	DESCRIPTION	PKG QTY	CTN QTY	CTN WT.
2001	5/16" X 3-1/2" DRIVE HOOK	500	1	53
920	7/16" X 4-3/4" DRIVE HOOK	25	8	51
9200	7/16" X 4-3/4" STAINLESS DRIVE HOOK	25	8	51

Guy Hook Attachments

B Guy Hook



Allied Bolt Products LLC

B GUY HOOK

PART#	DESCRIPTION	PKG QTY	CTN QTY	CTN WT.
5060	5/8" B GUY HOOK	25	1	38
5061	3/4" B GUY HOOK	25	1	46
5062	1" B GUY HOOK	10	1	32

C Guy Hook

C GUY HOOK



Allied Bolt Products LLC

PART#	DESCRIPTION	PKG QTY	CTN QTY	CTN WT.
5084	5/8" C GUY HOOK	25	1	46
5085	3/4" C GUY HOOK	25	1	61
5094	1" C GUY HOOK	10	1	46

One Bolt Guy Attachment

ONE BOLT GUY ATTACHMENT



Allied Bolt Products LLC

PART#	DESCRIPTION	PKG QTY	CTN QTY	CTN WT.
8070	ONE BOLT GUY ATTACHMENT	25	1	25

J Guy Hook

PART#	DESCRIPTION	PKG QTY	CTN QTY	CTN WT.
2575	J GUY HOOK	50	1	30



Allied Bolt Products LLC

Sidewalk Guying Fixture

SIDEWALK GUY FIXTURE FOR 2" PIPE



Allied Bolt Products LLC

PART#	DESCRIPTION	PKG QTY	CTN QTY	CTN WT.
1429	POLE PLATE AND END FITTING FOR 2" PIPE KIT	1	1	5
1436	POLE PLATE FOR SIDEWALK GUYING FIXTURE FOR 2" PIPE	5	1	25
1437	END FITTING FOR SIDEWALK GUYING FIXTURE FOR 2" PIPE	5	1	15

SIDEWALK GUY FIXTURE FOR 2-1/2" PIPE

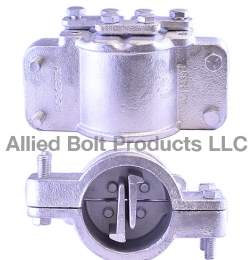
PART#	DESCRIPTION	PKG QTY	CTN QTY	CTN WT.
1450	POLE PLATE AND END FITTING FOR 2-1/2" PIPE KIT	1	1	5
1420	POLE PLATE FOR SIDEWALK GUYING FIXTURE FOR 2-1/2" PIPE	5	1	30
1421	END FITTING FOR SIDEWALK GUY FIXTURE FOR 2-1/2" PIPE	5	1	16



Allied Bolt Products LLC

TRIPLE SIDEWALK END FITTING FOR 2-1/2" PIPE

PART#	DESCRIPTION	PKG QTY	CTN QTY	CTN WT.
1438	TRIPLE SIDEWALK END FITTING FOR 2-1/2" PIPE	5	1	39



Allied Bolt Products LLC

Nuts and Lock Nuts



Regular Square Nut

REGULAR SQUARE NUT

PART#	DESCRIPTION	PKG QTY	CTN QTY	CTN WT.
90044	3/8" REGULAR SQUARE NUT	100	8	32
8205	1/2" REGULAR SQUARE NUT	100	4	22
8206	5/8" REGULAR SQUARE NUT	100	1	11
8200	3/4" REGULAR SQUARE NUT	100	1	16
8201	7/8" REGULAR SQUARE NUT	100	1	28
8375	1" REGULAR SQUARE NUT	50	1	18

Pole Plates



Lift Plate

LIFT PLATE

PART#	DESCRIPTION	PKG QTY	CTN QTY	CTN WT.
5182	2 HOLE LIFT PLATE	25	1	31
2820	3 HOLE LIFT PLATE	50	1	54



Strain Plate

PART#	DESCRIPTION	PKG QTY	CTN QTY	CTN WT.
5180	STRAIN PLATE	25	1	33



B GUY STRAP

B GUY STRAP

PART#	DESCRIPTION	PKG QTY	CTN QTY	CTN WT.
5183	B Guy Strap	20	1	39

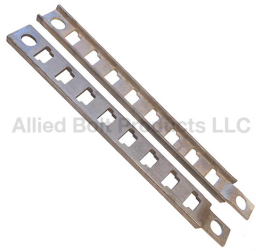
Underground Racks



Cable Rack Hook

CABLE RACK HOOK

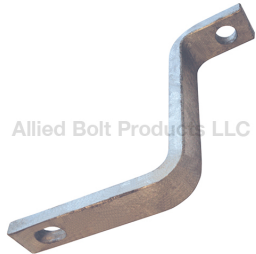
PART#	DESCRIPTION	PKG QTY	CTN QTY	CTN WT.
9600-4	4" CABLE RACK HOOK	100	1	43
9600-7	7-1/2" CABLE RACK HOOK	50	1	54
9600-10L	10" CABLE RACK HOOK	51	1	50
9600-10	10" CABLE RACK HOOK HEAVY DUTY	50	1	50
9600-14	14" CABLE RACK HOOK	25	1	40
9600-18	18" CABLE RACK HOOK	10	1	28



Underground Cable Rack

CABLE RACK WITH HOLE

PART#	DESCRIPTION	PKG QTY	CTN QTY	CTN WT.
9601-8	15" CABLE RACK WITH 8 'T' SLOTS	50	1	74
9601-14	24" CABLE RACK WITH 14 'T' SLOTS	10	1	20
9601-18	30" CABLE RACK WITH 18 'T' SLOTS	10	1	28
9601-37	55-1/4" CABLE RACK WITH 37 'T' SLOTS	1	1	6
9601-43	64-1/4" CABLE RACK WITH 43 'T' SLOTS	10	1	65
9601-47	70-1/4" CABLE RACK WITH 47 'T' SLOTS	1	1	7



Cable Rack Support

CABLE RACK SUPPORT

PART#	DESCRIPTION	PKG QTY	CTN QTY	CTN WT.
9610	3-5/8" X 4-1/4" X 2-1/4" CABLE RACK SUPPORT	25	1	57
9611	6-9/16" X 5-3/4" X 2-5/8" CABLE RACK SUPPORT	25	1	56



Cable Rack Clip

Cable Rack Clip

PART#	DESCRIPTION	PKG QTY	CTN QTY	CTN WT.
9615	CABLE RACK CLIP	100	4	2

Service, Secondary, and Neutral Hardware



SERVICE DEAD-END BRACKET

PART#	DESCRIPTION	PKG QTY	CTN QTY	CTN WT.
5063	SERVICE DEAD-END BRACKET	25	1	24

Lag Screws



Drive Screw

HEX HEAD DRIVE SCREW REGULAR POINT

PART#	DESCRIPTION	PKG QTY	CTN QTY	CTN WT.
358	1/4" X 2" HEX HEAD DRIVE SCREW REGULAR POINT	50	16	21
367	1/4" X 2-1/2" HEX HEAD DRIVE SCREW REGULAR POINT	50	16	32



Allied Bolt Products LLC

SQUARE HEAD DRIVE SCREW REGULAR POINT

PART#	DESCRIPTION	PKG QTY	CTN QTY	CTN WT.
372	1/4" X 2-1/2" SQUARE HEAD DRIVE SCREW REGULAR POINT	50	16	32
377	5/16" X 3" SQUARE HEAD DRIVE SCREW REGULAR POINT	50	8	26
530	3/8" X 2-1/2" SQUARE DRIVE SCREW REGULAR POINT	50	4	17
531	3/8" X 4" SQUARE HEAD DRIVE SCREW REGULAR POINT	50	4	26
532	1/2" X 4" SQUARE HEAD DRIVE SCREW REGULAR POINT	50	4	43



Allied Bolt Products LLC

SQUARE HEAD FETTER DRIVE SCREW DRIVE POINT

PART#	DESCRIPTION	PKG QTY	CTN QTY	CTN WT.
3760	3/8" X 3" SQUARE HEAD FETTER DRIVE SCREW DRIVE POINT	50	4	23
378	3/8" X 4" SQUARE HEAD FETTER DRIVE SCREW DRIVE POINT	50	4	26
37605	1/2" X 3" SQUARE HEAD FETTER DRIVE SCREW DRIVE POINT	50	4	33
529	1/2" X 4" SQUARE HEAD FETTER DRIVE SCREW DRIVE POINT	50	4	43
528	1/2" X 4-1/2" SQUARE HEAD DRIVE SCREW DRIVE POINT	50	4	47
7850	5/8" X 6" SQUARE HEAD FETTER DRIVE SCREW DRIVE POINT	50	1	30



Allied Bolt Products LLC

SQUARE HEAD TWIST DRIVE SCREW DRIVE POINT

PART#	DESCRIPTION	PKG QTY	CTN QTY	CTN WT.
5290	1/2" X 4" SQUARE HEAD TWIST DRIVE SCREW DRIVE POINT	50	4	43
379	1/2" X 4-1/2" SQUARE HEAD TWIST DRIVE SCREW DRIVE POINT	200	1	47
743	1/2" X 6-1/2" SQUARE HEAD TWIST DRIVE SCREW DRIVE POINT	100	1	37



Allied Bolt Products LLC

Coach Screw (Square Head Lag Screw)

COACH SCREW

PART#	DESCRIPTION	PKG QTY	CTN QTY	CTN WT.
129	1/4" X 2" COACH SCREW	25	32	22
522	1/4" X 2" COACH SCREW	50	16	21
523	1/4" X 2-1/2" COACH SCREW	50	16	27
130	5/16" X 2-1/2" COACH SCREW	25	16	20
131	5/16" X 3" COACH SCREW	50	8	23
7000	3/8" X 1-3/4" COACH SCREW	100	4	25



Allied Bolt Products LLC

Hex Lag Screw

1/4" HEX LAG SCREW

PART#	DESCRIPTION	PKG QTY	CTN QTY	CTN WT.
932	1/4" X 1" HEX LAG SCREW	100	16	24
870	1/4" X 1-1/4" HEX LAG SCREW	100	16	28
85	1/4" X 1-1/2" HEX LAG SCREW	100	16	32
719	1/4" X 2" HEX LAG SCREW	100	8	20
933	1/4" X 2-1/2" HEX LAG SCREW	100	4	15
762	1/4" X 3" HEX LAG SCREW	100	4	15
765	1/4" X 3-1/2" HEX LAG SCREW	50	4	11
766	1/4" X 4" HEX LAG SCREW	50	4	8
776	1/4" X 4-1/2" HEX LAG SCREW	50	4	13
780	1/4" X 5" HEX LAG SCREW	50	4	15
781	1/4" X 6" HEX LAG SCREW	50	4	18



5/16" HEX LAG SCREW

PART#	DESCRIPTION	PKG QTY	CTN QTY	CTN WT.
47	5/16" X 1-1/2" HEX LAG SCREW	100	8	26
768	5/16" X 2" HEX LAG SCREW	100	4	18
230	5/16" X 2-1/2" HEX LAG SCREW	50	8	20
783	5/16" X 3" HEX LAG SCREW	100	4	22
784	5/16" X 3-1/2" HEX LAG SCREW	50	4	17
785	5/16" X 4" HEX LAG SCREW	50	4	19
786	5/16" X 4-1/2" HEX LAG SCREW	50	4	11
789	5/16" X 5" HEX LAG SCREW	50	4	19
791	5/16" X 6" HEX LAG SCREW	50	4	15



3/8" HEX LAG SCREW

PART#	DESCRIPTION	PKG QTY	CTN QTY	CTN WT.
2003	3/8" X 1" HEX LAG SCREW	50	8	36
579	3/8" X 1-1/2" HEX LAG SCREW	100	8	36
721	3/8" X 2" HEX LAG SCREW	100	4	26
170	3/8" X 2-1/2" HEX LAG SCREW	100	4	28
722	3/8" X 3" HEX LAG SCREW	100	4	36
792	3/8" X 3-1/2" HEX LAG SCREW	50	4	24
582	3/8" X 4" HEX LAG SCREW	50	4	25
793	3/8" X 4-1/2" HEX LAG SCREW	50	4	30
794	3/8" X 5" HEX LAG SCREW	50	4	33
795	3/8" X 6" HEX LAG SCREW	50	4	30



1/2" HEX LAG SCREW

PART#	DESCRIPTION	PKG QTY	CTN QTY	CTN WT.
1686	1/2" X 1-1/2" HEX LAG SCREW	50	8	49
720	1/2" X 2" HEX LAG SCREW	100	4	46
796	1/2" X 2-1/2" HEX LAG SCREW	50	4	35
581	1/2" X 3" HEX LAG SCREW	50	4	41
797	1/2" X 3-1/2" HEX LAG SCREW	50	4	46
580	1/2" X 4" HEX LAG SCREW	50	4	44
584	1/2" X 4-1/2" HEX LAG SCREW	50	1	11
588	1/2" X 5" HEX LAG SCREW	50	4	63
589	1/2" X 6" HEX LAG SCREW	50	1	14
590	1/2" X 7" HEX LAG SCREW	50	1	18



5/8" HEX LAG SCREW

PART#	DESCRIPTION	PKG QTY	CTN QTY	CTN WT.
1507	5/8" X 5" HEX LAG SCREW	25	4	42



Hex Lag Screw Drive Point WITH Permaseal Washer

HEX LAG SCREW DRIVE POINT WITH PERMASEAL™ WASHER

PART#	DESCRIPTION	PKG QTY	CTN QTY	CTN WT.
7190DW	1/4" X 2" HEX LAG SCREW DRIVE POINT WITH PERMASEAL™ WASHER	1000	1	33
7191DW	1/4" X 2-1/2" HEX LAG SCREW DRIVE POINT WITH PERMASEAL™ WASHER	1000	1	35
7192DW	1/4" X 3" HEX LAG SCREW DRIVE POINT WITH PERMASEAL™ WASHER	1000	1	39
1710DW	1/4" X 4" HEX LAG SCREW DRIVE POINT WITH PERMASEAL™ WASHER	500	1	35



Allied Bolt Products LLC

HEX HEAD DRIVE SCREW DRIVE POINT GALVANIZED

PART#	DESCRIPTION	PKG QTY	CTN QTY	CTN WT.
7220	3/8" x 3" HEX HEAD DRIVE SCREW DRIVE POINT GALVANIZED	40	4	31

Hex Lag Screw w/ Permaseal™ Washer

HEX LAG SCREW W/ PERMASEAL WASHER



Allied Bolt Products LLC

PART#	DESCRIPTION	PKG QTY	CTN QTY	CTN WT.
7190	1/4" X 2" HEX LAG SCREW W/ PERMASEAL™ WASHER	1000	1	14
7191	1/4" X 2-1/2" HEX LAG SCREW W/ PERMASEAL™ WASHER	1000	1	18
7192	1/4" X 3" HEX LAG SCREW W/ PERMASEAL™ WASHER	1000	1	40
1710	1/4" X 4" HEX LAG SCREW W/ PERMASEAL™ WASHER	500	1	24

Staples

B Staple (Cut Point)

B STAPLE



Allied Bolt Products LLC

PART#	DESCRIPTION	PKG QTY	CTN QTY	CTN WT.
738	3/4" B STAPLE (3/4" LONG X 1/4" WIDE X .148" WIRE DIAMETER) (1LB PK)	1	40	41
699	1-1/4" B STAPLE (1-1/4" LONG X 1/4" WIDE X .148" WIRE DIAMETER) (1LB PK)	1	32	33
695	1-1/2" B STAPLE (1-1/2" LONG X 1/4" WIDE X .148" WIRE DIAMETER) (1LB PK)	1	32	33
696	1-1/2" B STAPLE (1-1/2" LONG X 5/16" WIDE X .148" WIRE DIAMETER) (1LB PK)	1	32	33
698	2" B STAPLE (2" LONG X 3/8" WIDE X .162" WIRE DIAMETER) (1LB PK)	1	32	33

Galvanized Staple (Rolled Point)

STAPLE GALVANIZED (ROLLED POINT)



Allied Bolt Products LLC

PART#	DESCRIPTION	PKG QTY	CTN QTY	CTN WT.
25112	1" X 3/8" X .125" ROLLED POINT GALVANIZED STAPLE	100	32	24
25116	1-1/2" X 3/8" X .148" ROLLED POINT GALVANIZED STAPLE	100	8	12
25021	1-3/4" X 5/8" X .187" ROLLED POINT GALVANIZED STAPLE	100	4	12
25117	1-3/4" X 3/8" X .148" ROLLED POINT GALVANIZED STAPLE	100	4	7
25115	2" X 1/2" X .162" ROLLED POINT GALVANIZE STAPLE	100	8	20
25003	2" X 5/8" X .162" ROLLED POINT GALVANIZED STAPLE	100	4	10
25022	2" X 3/4" X .187" ROLLED POINT GALVANIZED STAPLE	100	4	10
25004	2" X 1-1/16" X .187" ROLLED POINT GALVANIZED STAPLE	100	4	51
25023	2-1/4" X 7/8" X .187" ROLLED POINT GALVANIZED STAPLE	100	4	20
25024	2-1/2" X 1.20" X .250" ROLLED POINT GALVANIZED STAPLE	100	1	6
25005	3 X 1-1/16 X .250 ROLLED POINT GALVANIZED STAPLE	100	4	33
25113	3" X 1-1/2" X .25" ROLLED POINT GALVANIZED STAPLE	100	4	34
25114	3-1/2" X 1-3/4" X .25" ROLLED POINT GALVANIZED STAPLE	100	1	10

COPPER COATED STAPLE (ROLLED POINT)

COPPER COATED STAPLE (ROLLED POINT)



PART#	DESCRIPTION	PKG QTY	CTN QTY	CTN WT.
25002	1" X 1/4" X .114" ROLLED POINT COPPER COATED STAPLE	100	40	20
25001	1-1/4" X 1/4" X .114" ROLLED POINT COPPER COATED STAPLE	100	32	21
25007	1-1/2" X 5/16" X .144" ROLLED POINT COPPER COATED STAPLE	100	16	20
25008	1-1/2" X 3/8" X .144" ROLLED POINT COPPER COATED STAPLE	100	8	11
25009	1-3/4" X 3/8" X .144" ROLLED POINT COPPER COATED STAPLE	100	8	12
25010	2" X 1/2" X .162" ROLLED POINT COPPER COATED STAPLE	100	8	14
25011	2" X 5/8" X .162" ROLLED POINT COPPER COATED STAPLE	100	4	10
25012	2" X 1-1/16" X .187" ROLLED POINT COPPER COATED STAPLE	100	4	13
25013	2-1/2" X 1/2" X .250" ROLLED POINT COPPER COATED STAPLE	100	4	15
25014	2-1/2" X 1-1/16" X .187" ROLLED POINT COPPER COATED STAPLE	100	1	4
25015	3" X 3/4" X .250" ROLLED POINT COPPER COATED STAPLE	100	1	8
25016	3" X 1" X .250" ROLLED POINT COPPER COATED STAPLE	100	1	8
25017	3" X 1-1/16" X .250" ROLLED POINT COPPER COATED STAPLE	100	1	9
25018	3" X 1-1/2" X .250" ROLLED POINT COPPER COATED STAPLE	100	1	8
25019	3-1/2" X 1-1/2" X .250" ROLLED POINT COPPER COATED STAPLE	100	1	10

Pole Steps

Detachable Pole Step & Mount With Lag Screw

DETACHABLE POLE STEP



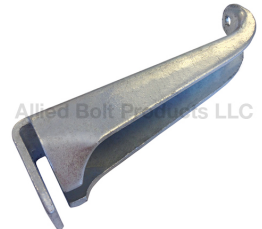
PART#	DESCRIPTION	PKG QTY	CTN QTY	CTN WT.
843	MOUNT WITH LAG SCREW	50	1	31
844	DETACHABLE POLE STEP	50	1	31
841	ENLONGATED DETACHABLE POLE STEP	50	1	36

SLIDE ON POLE STEP MOUNT



PART#	DESCRIPTION	PKG QTY	CTN QTY	CTN WT.
892	SLIDE ON POLE STEP MOUNT	50	1	17

SLIDE ON DETACHABLE POLE STEP



PART#	DESCRIPTION	PKG QTY	CTN QTY	CTN WT.
893	SLIDE ON DETACHABLE POLE STEP	50	1	25

Spike Head Pole Step

SPIKE HEAD POLE STEP



PART#	DESCRIPTION	PKG QTY	CTN QTY	CTN WT.
5800	5/8" X 10" SPIKE HEAD POLE STEP	50	1	45
8650	3/4" X 14" SPIKE HEAD POLE STEP	30	1	55



Fiberglass Pole Step

FIBERGLASS POLE STEP WITH FLAT SQUARE WASHER

PART#	DESCRIPTION	PKG QTY	CTN QTY	CTN WT.
6515	FIBERGLASS POLE STEP WITH FLAT SQUARE WASHER 10"	5	1	20



FIBERGLASS POLE STEP WITH CURVED SQUARE WASHER

PART#	DESCRIPTION	PKG QTY	CTN QTY	CTN WT.
6516	FIBERGLASS POLE STEP WITH CURVED SQUARE WASHER 10"	5	1	20



FIBERGLASS POLE STEP FOR POLE W/ ROUND WASHER

PART#	DESCRIPTION	PKG QTY	CTN QTY	CTN WT.
6512	FIBERGLASS POLE STEP FOR 8" POLE W/ ROUND WASHER	25	1	50
6507	FIBERGLASS POLE STEP FOR 10" POLE W/ ROUND WASHER	25	1	50



Composite Utility Pole Mount

Composite Utility Pole Mount

PART#	DESCRIPTION	PKG QTY	CTN QTY	CTN WT.
6508	COMPOSITE UTILITY POLE MOUNT FOR 10" POLE	25	1	39



Working Pole Step

WORKING POLE STEP

PART#	DESCRIPTION	PKG QTY	CTN QTY	CTN WT.
6514	WORKING POLE STEP FOR 8" POLE	10	1	38
6506	WORKING POLE STEP FOR 10" POLE	10	1	38

Washers



Square Washer

SQUARE WASHER FOR 1/2" BOLT

PART#	DESCRIPTION	PKG QTY	CTN QTY	CTN WT.
11502	1/8" X 2" SQUARE WASHER FOR 1/2" BOLT	100	4	48

SQUARE WASHER FOR 5/8" BOLT



PART#	DESCRIPTION	PKG QTY	CTN QTY	CTN WT.
11501	1/8" X 2" SQUARE WASHER FOR 5/8" BOLT	100	4	48
11500	3/16" X 2-1/4" SQUARE WASHER FOR 5/8" BOLT	100	2	48
11559	1/4" X 3-1/2" SQUARE WASHER FOR 5/8" BOLT	50	1	58
11500SS	3/16" X 2-1/4" STAINLESS STEEL SQUARE WASHER FOR 5/8" BOLT	100	2	49

SQUARE WASHER FOR 3/4" BOLT



PART#	DESCRIPTION	PKG QTY	CTN QTY	CTN WT.
11550	3/16" X 2-1/4" SQUARE WASHER FOR 3/4" BOLT	100	2	48
11550SS	3/16" X 2-1/4" STAINLESS STEEL SQUARE WASHER FOR 3/4" BOLT	100	2	44
11551	1/4" X 3" SQUARE WASHER FOR 3/4" BOLT	100	1	57
11556	3/8" x 3-1/2" SQUARE WASHER FOR 3/4" BOLT	50	1	56
11557	3/16" X 4" SQUARE WASHER FOR 3/4" BOLT	50	1	33

SQUARE WASHER FOR 7/8" BOLT



PART#	DESCRIPTION	PKG QTY	CTN QTY	CTN WT.
11600	3/8" X 3-1/2" SQUARE WASHER FOR 7/8" BOLT	50	1	31
11553	5/16" x 3" SQUARE WASHER FOR 7/8" BOLT	75	1	52
11549	1/4" x 4" SQUARE WASHER FOR 7/8" BOLT	50	1	44

SQUARE WASHER FOR 1" BOLT



PART#	DESCRIPTION	PKG QTY	CTN QTY	CTN WT.
11705	1/2" X 4" SQUARE WASHER FOR 1" BOLT	25	1	47
11700	3/8" X 6" SQUARE WASHER FOR 1" BOLT	15	1	58

STAINLESS STEEL SQUARE WASHER



PART#	DESCRIPTION	PKG QTY	CTN QTY	CTN WT.
11500SS	3/16" X 2-1/4" STAINLESS STEEL SQUARE WASHER FOR 5/8" BOLT	100	2	49
11550SS	3/16" X 2-1/4" STAINLESS STEEL SQUARE WASHER FOR 3/4" BOLT	100	2	44

Curved Washer

5/8" CURVED WASHER



PART#	DESCRIPTION	PKG QTY	CTN QTY	CTN WT.
11552	CURVED WASHER 2-1/4" X 2-1/4" X 11/16" HOLE X 3/16" THICK	50	4	42
11555	CURVED WASHER 2-1/2" X 2-1/2" X 11/16" HOLE X 3/16" THICK	50	4	56
233	CURVED WASHER 3" X 3" X 11/16" HOLE X 1/4" THICK	50	2	65

3/4" CURVED WASHER



PART#	DESCRIPTION	PKG QTY	CTN QTY	CTN WT.
244	CURVED WASHER 3" X 3" X 13/16" HOLE X 1/4" THICK	50	2	54
231	CURVED WASHER 3-1/8" X 3-1/4" X 13/16" HOLE X 1/4" THICK	50	2	58
221	CURVED WASHER 4" X 4" X 13/16" HOLE X 1/4" THICK	50	1	42
220	CURVED WASHER 4" X 4" X 13/16" HOLE X 3/8" THICK	25	1	42

7/8" CURVED WASHER



PART#	DESCRIPTION	PKG QTY	CTN QTY	CTN WT.
238	CURVED WASHER 3-3/8" X 3-1/2" X 15/16" HOLE X 3/8" THICK	50	1	53
228	CURVED WASHER 4" X 4" X 15/16" HOLE X 1/4" THICK	50	1	59

1" CURVED WASHER



PART#	DESCRIPTION	PKG QTY	CTN QTY	CTN WT.
237	CURVED WASHER 3-3/8" X 3-1/2" X 1-1/8" HOLE X 3/8" THICK	50	1	53

USS Round Washer Galvanized

USS ROUND WASHER GALVANIZED



PART#	DESCRIPTION	PKG QTY	CTN QTY	CTN WT.
11001	3/16" USS ROUND WASHER GALVANIZED (1/4" ID X 9/16" OD X 3/64" THICK)	100	40	18
653	1/4" USS ROUND WASHER GALVANIZED (5/16" ID X 3/4" OD X 1/16" THICK)	100	40	22
11002	5/16" USS ROUND WASHER GALVANIZED (3/8" ID X 7/8" OD X 5/64" THICK)	100	40	56
249	3/8" USS ROUND WASHER GALVANIZED (7/16" ID X 1" OD X 5/64" THICK)	100	32	56
249A	3/8" USS ROUND WASHER GALVANIZED (7/16" ID X 1" OD X 5/64" THICK)	250	8	35
104	1/2" USS ROUND WASHER GALVANIZED (9/16" ID X 1-3/8" OD X 7/64" THICK)	50	16	32
11003	5/8" USS ROUND WASHER GALVANIZED (3/4" ID X 1-3/4" OD X 9/64" THICK)	100	4	31
11003A	5/8" USS ROUND WASHER GALVANIZED (3/4" ID X 1-3/4" OD X 9/64" THICK)	500	1	29
7017	3/4" USS ROUND WASHER GALVANIZED (7/8" ID X 2" OD X 5/32" THICK)	100	4	39
7015	7/8" USS ROUND WASHER GALVANIZED (15/16" ID X 2-1/4" OD X 11/64" THICK)	50	4	31
7011	1" USS ROUND WASHER GALVANIZED (1-1/16" ID X 2-1/2" OD X 11/64" THICK)	50	4	10
976100	1-1/4" x 3" USS ROUND WASHER GALVANIZED (1-3/8" ID X 3" OD X 11/64" THICK)	50	1	14

3" Diameter Washer

3" DIAMETER WASHER BOLT



PART#	DESCRIPTION	PKG QTY	CTN QTY	CTN WT.
12906	3" DIAMETER WASHER BOLT SIZE 1/2"	100	1	49
12907	3" DIAMETER WASHER BOLT SIZE 5/8"	100	1	48
12908	3" DIAMETER WASHER BOLT SIZE 3/4"	100	1	65
12909	3" DIAMETER WASHER BOLT SIZE 7/8"	100	1	47
12910	3" DIAMETER WASHER BOLT SIZE 1"	100	1	53

ADSS Fiber Cable Hardware



Aluminum Trunnion Support for ADSS Fiber Cable

ALUMINUM TRUNNION SUPPORT FOR ADSS FIBER CABLE

PART#	DESCRIPTION	PKG QTY	CTN QTY	CTN WT.
9700-1	TRUNNION CLAMP FOR ADSS FIBER .356"-.459" BLACK	10	1	24
9700-3	TRUNNION CLAMP FOR ADSS FIBER .459"-.555" ORANGE	10	1	24
9700-5	TRUNNION CLAMP FOR ADSS FIBER .551"-.649" BLUE	10	1	24
9700-7	TRUNNION CLAMP FOR ADSS FIBER .649"-.748" WHITE	10	1	24