

Nail or Screw On Low Voltage Mounting Brackets for New Construction

Single through 4-gang brackets for the installation of low voltage Class 2 only.

FEATURES AND BENEFITS

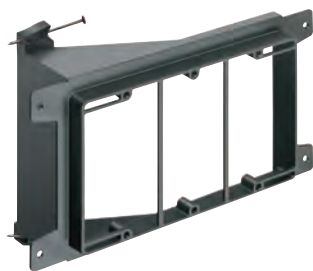
- Non-metallic
- Built-in loop to tie off cable
- Eliminates pushback
- Comes complete with nails parked in place ready to install!
- Installs in 25% less time than steel or plastic mud rings
- Nail-on ("N" styles) for wood studs
- Screw-on ("S" styles) for metal studs



LVS1



LVN2



LVN3

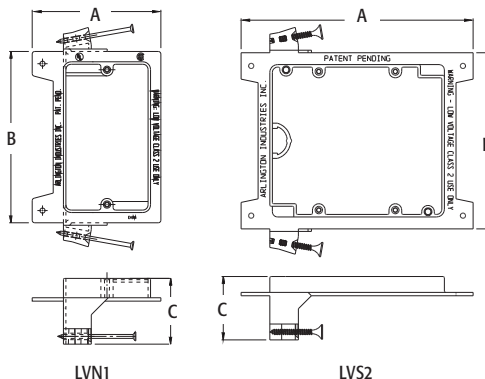


LVS4

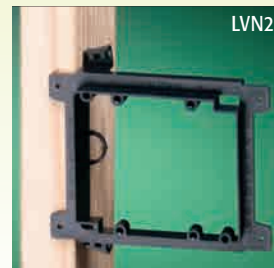
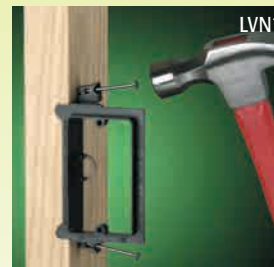
CATALOG NUMBER	UPC/DCI/NAED MFG #018997	DESCRIPTION	UNIT PKG	STD PKG	DIM A	DIM B	DIM C
LVN1	00261	Nail On Style	50	50	2.810	4.170	1.500
LVN2	00275	Nail On Style	25	25	5.492	4.170	1.500
LVN3	00277	Nail On Style	10	10	7.804	4.170	1.500
LVN4	00278	Nail On Style	10	10	9.615	4.170	1.500
LVS1	00262	Screw On Style	50	50	2.810	4.170	1.500
LVS2	00280	Screw On Style	25	25	5.492	4.170	1.500
LVS3	00282	Screw On Style	10	10	7.804	4.170	1.500
LVS4	00283	Screw On Style	10	10	9.615	4.170	1.500

PATENTED.

**LOWER COST
THAN STEEL
MUD RINGS**



INSTALLATION SHOTS



Scan For Video

