

# Molded Case Circuit Breakers

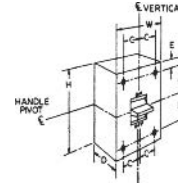
## Industrial Circuit Breakers

### Quick Reference Guide

#### 10-1200A Circuit Breakers

#### Thermal Magnetic Trip

Ratings do not apply to molded case switches. The interruption ratings and voltages shown in the table are maximum ratings. A circuit breaker of the type given in the left-hand column may be applied at the given circuit voltage in any electrical distribution system where the available fault current at the load terminals of the breaker does not exceed the value in the table. That circuit breaker type may also be applied at intermediate values of circuit voltage provided the available fault current at the load terminals of the breaker does not exceed the value in the table for the higher value of voltage.



TEYD, TEYH, TEYL

TEY and TEYF (UL File E-11592; Fixed Thermal Magnetic Trip Unit; CSA LR 57114)

Circuit Breaker Type	Ampere Rating	No. Poles	Maximum Voltage Rating		UL Listed Interrupting Rating—kA										Dimensions (in)						Approx. Ship Wt./Std. Pack	
					Vac					Vdc												
					ac	dc	120	120/240	240	277	480	600	125	250	500	600	H	W	D	A		B
TEY <sup>2,3</sup>	15-100	1	277	125	65		14	14	—	—	10	—	—	—	5 1/4	1	3 1/16	—	—	—	—	—
		2	480/277	250	—	—	65	14	14 <sup>6</sup>	—	—	10	—	—		2						
		3		—	—	—	—	—	—	—	—	—	—	3								
TEYF <sup>2,3</sup>	15-60	1	277	125	65		14	18	—	—	10	—	—	5 1/4	1	3 1/16	—	—	—	—	—	
	15-125	2	480/277	250	—	—	65	18	18 <sup>6</sup>	—	—	10	—		2							
		3		—	—	—	—	—	—	—	—	—	—		3							
TEYD	15-70	1	277	—	65	65	—	25	—	—	—	—	—	5 1/4	1	3 1/16	—	—	—	—	1 lb	
	15-125	2	480/277	—	—	65	65	—	25 <sup>6</sup>	—	—	—	—		2		2 lb					
		3		—	—	—	—	—	—	—	—	—	—		3		2.7 lb					
TEYH	15-70	1	277	—	65	65	—	35	—	—	—	—	—	5 1/4	1	3 1/16	—	—	—	—	1 lb	
	15-125	2	480/277	—	—	65	65	—	35 <sup>6</sup>	—	—	—	—		2		2 lb					
		3		—	—	—	—	—	—	—	—	—	—		3		2.7 lb					
TEYL	15-70	1	277	125	100	100	—	65	—	—	15	—	—	5 1/4	1	3 1/16	—	—	—	—	1 lb	
	15-125	2	480/277	250	—	100	100	—	65 <sup>6</sup>	—	42	20	—		2		2 lb					
		3		—	—	—	—	—	—	—	42	35	—		—		3	2.7 lb				

E150 (UL File E-11592; Fixed Thermal Magnetic Trip Unit; CSA LR 57114)

TEB <sup>2,3</sup>	10-100 <sup>4</sup>	1	120	125	10	—	—	—	—	—	5	—	—	6 5/16	1 3/8	3 3/8	2 41/64	2 15/64	—	23/32	26 lb/24				
		2	240	250	—	—	10	—	—	—	—	5	—		—				2 3/4		24 lb/12				
		3		—	—	—	10	—	—	—	—	—	—		—				4 1/8		28 lb/8				
TED <sup>2,3</sup>	10-100 <sup>4</sup>	1	277, 347 <sup>5</sup>	125	—	—	—	14	10	—	10	—	—	6 5/16	1 3/8	3 3/8	2 41/64	2 15/64	—	23/32	26 lb/24				
		2	480	250	—	—	18	—	18	—	—	10	—		—				2 3/4		24 lb/12				
	10-150 <sup>4</sup>	3	480, 600	500	—	—	—	—	—	—	14	—	—	10 <sup>1</sup>	—	4 1/8	—	—	11/16	—	28 lb/8				
THED <sup>2,3</sup>	15-30	1	277, 347 <sup>5</sup>	125	—	—	—	65	—	—	10 <sup>7</sup>	—	—	6 5/16	1 3/8	3 3/8	2 41/64	2 15/64	—	23/32	26 lb/24				
	15-100	2	480	250	—	—	65	—	—	—	10 <sup>7</sup>	—	—		4 1/8				—		—	—	—	24 lb/12	
	15-100	3	600	500	—	—	65	—	25	—	18	—	—		—				—		—	—	11/16	—	28 lb/8
	110-150	—	—	—	—	—	—	—	—	—	—	—	—		—				—		—	—	—	—	—

<sup>1</sup>UL listed with poles in series for 500 Vdc ungrounded battery applications.

<sup>2</sup>UL listed as HACR (heating, air conditioning, and refrigeration).

<sup>3</sup>15-50A UL listed as HID (high intensity discharge).

<sup>4</sup>10 amp not UL listed, rated 5kA @ 120V, 240V and 480V

<sup>5</sup>UL listed/CSA Certified for 10kA @ 347 Vac (TED) and 18kA @ 347V (THED). Also rated 10kA @ 480V but not UL listed.

<sup>6</sup>480Y/277 Vac.

<sup>7</sup>UL listed 10kA, GE tested to 20kA.

<sup>8</sup>No longer available

<sup>9</sup>Not CSA listed



# Molded Case Circuit Breakers

## Internal Accessories

Internally Mounted Signaling and Controlling Functions

### How to Order

For field replacement, order base number only. For factory installation, contact Customer Service Center and order base number plus appropriate suffix. For a nonautomatic breaker (molded case switch) a dummy trip is required when installing either a shunt trip or UVR.

### Shunt Trip

Remote Tripping – Trips breaker by remote control. Trip coil de-energized when breaker opens. Device meets UL requirements for service to ground fault system.

### Undervoltage Release

Undervoltage release automatically trips breaker when applied coil voltage drops to 30 to 70 percent of rated value. Time-delay unit prevent nuisance tripping due to momentary loss of voltage. Separate externally mounted unit has 120 Vac input and 125 Vdc output. Used in conjunction with 125 Vdc undervoltage release which must be ordered separately. Product number SPUVTD for adjustable delay .1 to 1.0 seconds.

### Shunt Trip

Breaker Type	Accessory Voltage		Product Number <sup>1,2</sup> – UL Listed When Factory Installed	
	Vac	Vdc	Base Number for Field Replacement	Suffix Number <sup>3</sup>
				Add to Base Product Number for Factory Installation
TEB, TEC, TB1-B <sup>4</sup> , TED, THED, THLC1	120		TEDST12	RS
	240		TEDST12	RS
	480		TEDST13	RS
	600		TEDST13	RS
		12	TEDST7	RS
		24	TEDST8	RS
		48	TEDST9	RS
		125	TEDST12	RS
		250	TEDST11	RS
	TFC, TFJ, TFK, THFK, THLC2, THLC4, TLB2, TLB4	120		TFKSTA12 <sup>1</sup>
240			TFKSTA12 <sup>1</sup>	RS or LS
480			TFKSTA13 <sup>1</sup>	RS or LS
600			TFKSTA13 <sup>1</sup>	RS or LS
		12	TFKSTA7 <sup>1</sup>	RS or LS
		24	TFKSTA8 <sup>1</sup>	RS or LS
		48	TFKSTA9 <sup>1</sup>	RS or LS
		125	TFKSTA12 <sup>1</sup>	RS or LS
		250	TFKSTA11 <sup>1</sup>	RS or LS

<sup>1</sup>UL listed for field installation on TFC, TFJ, TFK, and THFK model 4 frames and trips (mfg. Code date J101 or later) and on THLC2, THLC4, TLB4.

<sup>2</sup>For replacement voltage suppressor on 120 Vac UVRs for F225 line, order Product Number 286A8062G1. for 120 Vac UVRs on all other breaker lines, order Product Number 192A8300G1.

<sup>3</sup>"S" suffix for wires out the side of the breaker. For lead exit from back of breaker, replace suffix "S" with "B". "B" suffix not UL listed.

Not available with leads out the back on "Q-Line." For factory installation, contact Customer Service Center.

<sup>4</sup>For TB1 with bolt-on limiters.

