

# Accessories

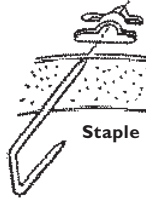
## T-Bar ceiling clips



**1956**  
For use with series 2000, 1000 and 1102HF.\*

\*All other 1100 Series and Lytning frame-in kits mounting bars have integral T-bar tab. Position notched area of mounting bar on top of T-bar and lock by bending tab underneath T-bar bead. Mounting bars permit frame to be positioned off-center between 24" joists.

## Staples & nails

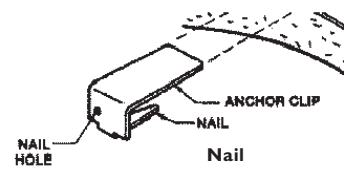


Anchors 1000+1100 series frame-in kits when used as a remodeler (See instruction sheet for application and further information)

Order quantity of 1 per fixture (will receive pack of 4)



**1985S**  
1100 Series



NAIL HOLE

ANCHOR CLIP

NAIL

Nail



**1985N**  
1000 Series

## Plaster ceiling ring



Fits all frame-in kits except Non-IC remodelers. Full 7/8" deep. Installed after mounting frame, before plastering ceiling.

**1959** Series 2000 (Not for 2000AICV)  
**1960** Series 1000  
**1961** Series 1100 (Not for Lytning or 1100DAICM)

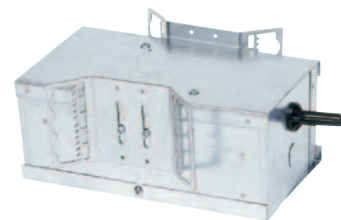
## Extra wide flange trim ring



Matte white finish

**1954**  
For 1100 series reflector trims (except 1126-1128, 1170-1199) – O.D. 8 5/8" I.D. 6 3/4."  
**1957**  
For series 1000 reflector trims – O.D. 7" I.D. 5" (except 1071, 1082, 1085, 1076).

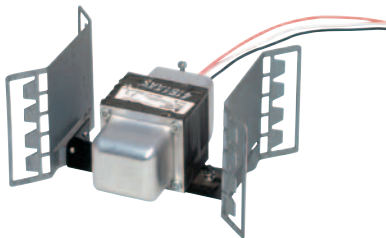
## MR16 Remote transformer



**8608**  
75W Max.  
**8609**  
225W Max.

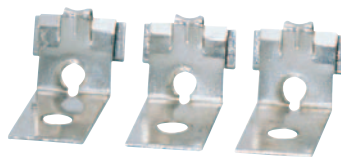
**MR16 Remote transformer**  
LVNT Frame-in kits may be installed in new ceilings up to 1" thick. Philips Lightolier remote transformers 8608 (75W) and 8609 (225W) are fused and suitable for recessed installation.

## 277V Operation remote step-down transformer



**7997**  
Supplies 120v fixture from a 277v branch circuit (20 amp. minimum). Can be used for multiple fixtures (not to exceed 300W maximum load).

## Retaining clips



**1955**  
For installation in existing ceilings. Box of 100. For Series 2000, 1000, 1100 (except Basic reflectors, Deep and shallow specular reflectors). 1 1/4" maximum ceiling thickness.