

Conduit Outlet Boxes and Bodies: Malleable Iron or Aluminum; Explosionproof, Dust-Ignitionproof UNILETS® for use with Threaded Metal Conduit.

Applications

- Meet a wide range of classified area requirements.
- Corrosion-resistant—ideal indoors or out.
- For pulling of wires.
- Connect conduit lengths and change direction of conduit.
- Provide access for maintenance.

Features: All Bodies and Boxes

- Malleable iron bodies have high tensile strength and ductility. Provides great resistance to corrosion, impact, and shock.
- Accurately tapped, tapered hub threads for tight, rigid joints and ground continuity.
- Furnished with covers.
- General purpose wiring.

Features: GR and GRF

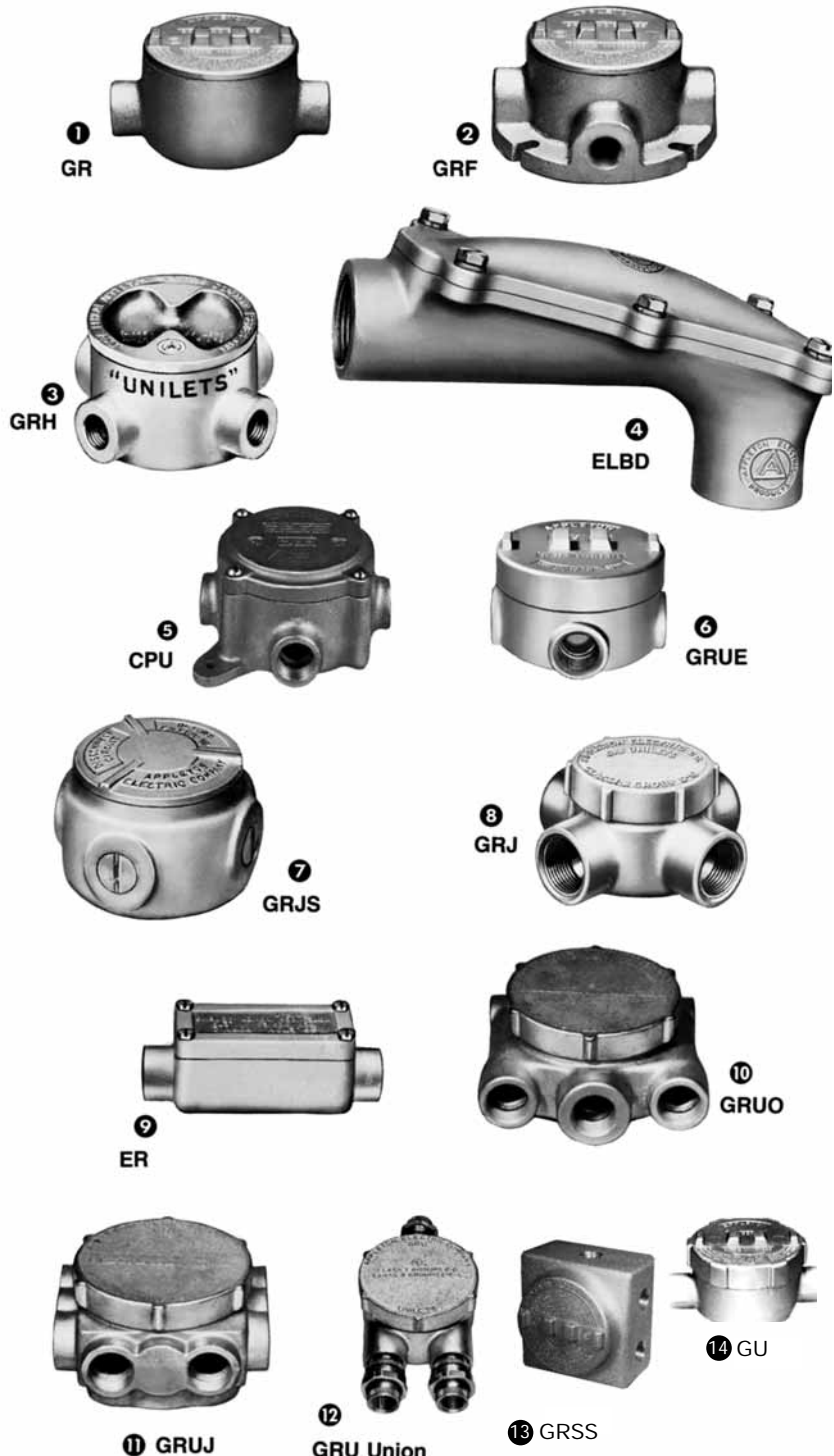
- ①GR offers ten hub arrangements.
- ②GRF has integral mounting flange.
- Function as sealing fittings when used with sealing covers (see NEC for restrictions).
- Internally threaded body with externally threaded cover.
- Covers have pry notches for bar or wrench.
- Accommodate sealing, dome, hub and union hub covers, and canopies.
- Standard O-rings provide raintight fit. NEMA 3,4.
- Internal ground screw standard.
- Smooth, rounded integral bushing in each hub type box protects conductor insulation.

Features: GRH

- ③Designed for use in Class I, Groups A, B, C, and D; Class II, Groups E, F, and G; and Class III.
- Internally threaded body with externally threaded covers.
- Standard O-rings provide raintight fit. NEMA 3,4.
- Internal ground screw standard.
- Smooth, rounded integral bushing in each hub type box protects conductor insulation.

Features: ELBD

- ④Exclusive built-in pulling rollers in each end (2-1/2 thru 4" sizes) protect cable from damage and make cable pulling easier.



Conduit Outlet Boxes and Bodies: Malleable Iron or Aluminum; Explosionproof, Dust-Ignitionproof

UNILETS® for use with Threaded Metal Conduit.

- Excellent for use in wiring of motors, panelboards, circuit breakers, entrances to buildings, etc.

- Body and cover have ground mating surfaces to meet classified-location requirements.

- Smooth, rounded integral bushing in each hub type box protects conductor insulation.

Features: ELBY

- Serve as pulling fittings.
- Make 90° bends in conduit.
- Threaded cover opening permits easy access for pulling conductors thru hubs.
- Easily removable threaded cover.

Features: CPU

- ⑤ Universal design with four threaded universal hubs and three close-up plugs.

- Serve as mounting outlets for lighting fixtures when used with hub cover.

- Wide, accurately ground explosion-proof mating surfaces.

- Smooth, rounded integral bushing in each hub type box protects conductor insulation.

Features: GRU and GRUE

- ⑥ Universal design with five threaded universal hubs and three close-up plugs.

- Copper-free aluminum body and cover provide resistance to corrosive atmospheres.

- Function as sealing fittings when used with sealing covers (see NEC for restrictions).

- GRU has internally threaded body and externally threaded cover. GRUE has externally threaded body and internally threaded overlapping cover.

- Standard O-Rings provide raintight fit. NEMA 3,4.

- Covers have pry notches for bar or wrench.

- Smooth, rounded integral bushing in each hub type box protects conductor insulation.

Features: GRJS

- ⑦ Universal design with five threaded openings and three close-up plugs.

- Compact round box for use where space is limited.

- Serve as mounting means for lighting fixtures when used with hub cover.

- Function as sealing fittings when used with sealing covers (see NEC for restrictions).

- Internally threaded body with externally threaded cover.

- Smooth, rounded integral bushing in each hub type box protects conductor insulation.

Features: GRJ

- ⑧ Small, round conduit outlet boxes.

- Function as sealing fittings when used with sealing covers (see NEC for restrictions).

- Externally threaded body with internally threaded cover.

- Smooth, rounded integral bushing in each hub type box protects conductor insulation.

Features: ER

- ⑨ Compact, rectangular conduit outlet boxes are ideal in classified locations where space is limited.

- Six different hub arrangements.

- Ground surface contact between body and cover assures a flame-tight joint.

- Smooth, rounded integral bushing in each hub type box protects conductor insulation.

Features: GRUO and GRUJ

- Threaded universal hubs for wiring flexibility.

- ⑩ GRUO has eight hubs.

- ⑪ GRUJ offers up to eleven hubs.

- Ideally suited for use where space is limited, such as for gasoline pumps.

- Function as sealing fittings when used with sealing cover (see NEC for restrictions).

- Externally threaded body with internally threaded covers.

- Smooth, rounded integral bushing in each hub type box protects conductor insulation.

Features: GRU (Union Hubs)

- ⑫ Union hubs permit easy wiring.

- Function as sealing fittings when used with sealing covers (see NEC for restrictions).

- Externally threaded body with internally threaded cover.

- Smooth, rounded integral bushing in each hub type box protects conductor insulation.

Features: GRSS and GRSSA

- ⑬ Multiple hubs permit flexibility.

- Copper-free aluminum body and cover provide superior corrosion resistance.

- Internal ground screw standard.

Features: GU

- ⑭ Designed for Class I, Groups B,C,D; Class II, Groups E,F,G; and Class III.

- Externally threaded body with internally threaded cover.

- Smooth, rounded integral bushing in each hub type box protects conductor insulation.

- Internal ground screw standard.

Standard Materials

- GR, GRF, GRH, and GRJS: Malleable iron bodies with aluminum covers.

- Aluminum GR Series: Copper-free body and cover.

- GU, GRUO, GRUJ, GRU (Union), GRJ, CPU, ER, ELBD and ELBY: Malleable iron bodies and covers.

- GRU, GRUE, and GRSS: Aluminum copper-free bodies and covers.

- GRG O-Rings: Neoprene.

Standard Finishes

- Malleable iron bodies and covers (except ELBY) triple-coat—(1)zinc electroplate, (2) dichromate, and (3) epoxy powder coat.

- Aluminum bodies and covers: epoxy powder coat.

- ELBY malleable iron body and cover: zinc electroplate and clear chromate.

Compliances

- UL Standard 886.

- Federal Spec. W-C-586B.

- Appleton malleable iron products conform to ASTM A47-77, Grade 32510, which has the following properties: tensile strength, 50,000 psi; yield, 32,000 psi; and elongation, 10%.

- Appleton aluminum products are produced from a high strength copper-free (4/10 of 1% max.) alloy.








- Suitable for Class I, Div. 1 & 2, if installed in compliance with NEC 501-4(a)(b) and for Class II, Div. 1 & 2, if in compliance with NEC 502-4(a)(b).

- GR Series: CSA -LR25875-30.

J-4

Class I, Div. 1 and 2
Groups B*, C, D
Class II, Div. 1 and 2
Groups E, F, G
Class III
NEMA 3, 4

GR Conduit Outlet Boxes: Explosionproof, Dust-Ignitionproof UNILETS® for use with Threaded Metal Conduit. Furnished with Internal Ground Screw and O-Ring.

	Hub Type	Conduit Size (Inches)	Cover Opening (Inches)	Cubic Inches	Form No.†	Catalog Number*	
						Malleable Iron•	Aluminum•
	GRE	1/2	3.38	18	1	GRE50	GRE50-A
		3/4	3.38	18	1	GRE75	GRE75-A
		1	3.38	18	1	GRE100	GRE100-A
		1-1/4	3.94	31	2	GRE125	GRE125-A
		1-1/2	4.88	72	3	GRE150	GRE150-A
	GRC	1/2	3.38	18	1	GRC50	GRC50-A
		3/4	3.38	18	1	GRC75	GRC75-A
		1	3.38	18	1	GRC100	GRC100-A
		1-1/4	3.94	31	2	GRC125	GRC125-A
		1-1/2	4.88	72	3	GRC150	GRC150-A
2	4.88	76	3	GRC200	GRC200-A		
	GRL	1/2	3.38	18	1	GRL50	GRL50-A
		3/4	3.38	18	1	GRL75	GRL75-A
		1	3.38	18	1	GRL100	GRL100-A
		1-1/4	3.94	31	2	GRL125	GRL125-A
		1-1/2	4.88	72	3	GRL150	GRL150-A
2	4.88	76	3	GRL200	GRL200-A		
	GRLB	1/2	3.38	18	1	GRLB50	GRLB50-A
		3/4	3.38	18	1	GRLB75	GRLB75-A
		1	3.38	18	1	GRLB100	GRLB100-A
		1-1/4	3.94	31	2	GRLB125	GRLB125-A
		1-1/2	4.88	72	3	GRLB150	GRLB150-A
2	4.88	76	3	GRLB200	GRLB200-A		
	GRN	1/2	3.38	18	1	GRN50	GRN50-A
		3/4	3.38	18	1	GRN75	GRN75-A
		1	3.38	18	1	GRN100	GRN100-A
		1-1/4	3.94	31	2	GRN125	GRN125-A
		1-1/2	4.88	72	3	GRN150	GRN150-A
	GRT	1/2	3.38	18	1	GRT50	GRT50-A
		3/4	3.38	18	1	GRT75	GRT75-A
		1	3.38	18	1	GRT100	GRT100-A
		1-1/4	3.94	31	2	GRT125	GRT125-A
		1-1/2	4.88	72	3	GRT150	GRT150-A
2	4.88	76	3	GRT200	GRT200-A		
	GRX	1/2	3.38	18	1	GRX50	GRX50-A
		3/4	3.38	18	1	GRX75	GRX75-A
		1	3.38	18	1	GRX100	GRX100-A
		1-1/4	3.94	31	2	GRX125	GRX125-A
		1-1/2	4.88	72	3	GRX150	GRX150-A
2	4.88	76	3	GRX200	GRX200-A		

* In Group "B" atmospheres, all conduit runs must have a sealing fitting (not supplied) field installed adjacent to the enclosure.

• Supplied with Aluminum covers.

† Form number designates body and matching cover sizes. To order body without cover, add suffix -LC to catalog number.

Other covers available—see GR Cover listing page and order separately.

See J-8 for optional Terminal Blocks.

Class I, Div. 1 and 2
Groups B*, C, D
Class II, Div. 1 and 2
Groups E, F, G
Class III
NEMA 3, 4

GR Conduit Outlet Boxes: Explosionproof, Dust-Ignitionproof UNILETS® for use with Threaded Metal Conduit. Furnished with Internal Ground Screw and O-Ring.



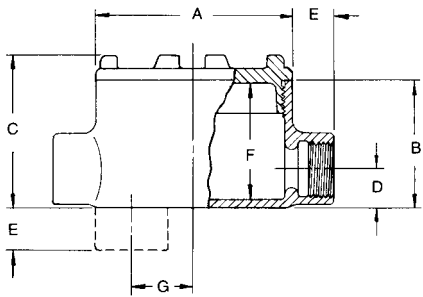
Hub Type	Conduit Size (Inches)	Cover Opening (Inches)	Form No.†	Catalog Number*	
				Malleable Iron	Aluminum
GRCA	1/2	3.38	1	GRCA50	GRCA50-A
	3/4	3.38	1	GRCA75	GRCA75-A
GRLA	1/2	3.38	1	GRLA50	GRLA50-A
	3/4	3.38	1	GRLA75	GRLA75-A
GRTA	1/2	3.38	1	GRTA50	GRTA50-A
	3/4	3.38	1	GRTA75	GRTA75-A

- * In Group "B" atmospheres, all conduit runs must have a sealing fitting (not supplied) field installed adjacent to the enclosure.
- Supplied with Aluminum covers.

† Form number designates body and matching cover sizes. To order body without cover, add suffix -LC to catalog number.
Other covers available—see GR Cover listing page and order separately.

See J-8 for optional Terminal Blocks.

GR Form 1



GR Series, Form 1

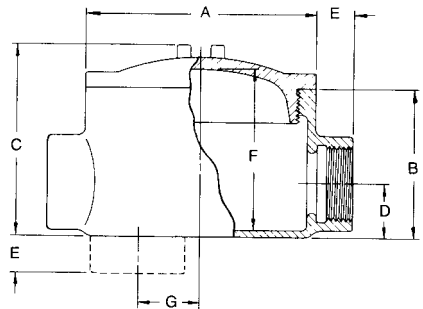
Dimensions in Inches

Hub Size (In.)	A	B	C	D	E	F	G
1/2	3.75	2.44	2.88	.75	.81	2.25	1.25
3/4	3.75	2.44	2.88	.75	.81	2.25	1.25
1	3.75	2.44	2.88	.94	.94	2.25	1.06

Dimensions in Centimeters

1/2	9.5	6.2	7.3	1.9	2.1	5.7	3.2
3/4	9.5	6.2	7.3	1.9	2.1	5.7	3.2
1	9.5	6.2	7.3	2.4	2.4	5.7	2.7

GR Forms 2 and 3



GR Series, Forms 2 and 3

Dimensions in Inches

Hub Size (In.)	A	B	C	D	E	F	G
1-1/4	4.50	2.69	3.56	1.19	.88	2.75	1.13
1-1/2	5.75	3.75	4.81	1.38	.94	4.06	1.50
2	5.75	4.00	5.06	1.63	1.00	4.25	1.25

Dimensions in Centimeters

1-1/4	11.4	6.8	9.1	3.0	2.2	7.0	2.9
1-1/2	14.6	9.5	12.2	3.5	2.4	10.3	3.8
2	14.6	10.2	12.9	4.1	2.5	10.8	3.2

For cubic inches information, see page J-19