

Underground Products Data Sheet

Index



Page 2

Plastic spacer system...lock vertically and horizontally
For rapid field assembly **Multiple pipe size adapter**



Page 4

Plugs and accessories...GS Industries of Bassett temporary plugs and accessories designed for plastic and other common types of pipe.

Terms and Conditions

We reserve the right to ship and sell in increments of Standard Pack. There will be a \$5.00 charge for broken carton quantities other than Standard Pack.

Freight Policy

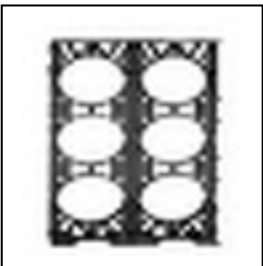
F.O.B. Bassett, Virginia, Freight prepaid to destinations in the east and central states on shipments of \$1000.00 net sales or more per shipments. Freight prepaid to destinations in the following states on shipments of \$1250.00 net sales or more per shipment: Arizona, California, Colorado, Idaho, Montana, Nevada, New Mexico, Oregon, Utah, Washington, and Wyoming.

Shipments outside of the Continental USA Collect or Customer pickup.

Shipments from regional warehouses are F.O.B. Warehouse no freight allowed.

8" Underground Spacer

The 8" Underground Spacer has been designed to be the strongest most rugged spacer in the industry.



Features/Advantages

- Crush strength of over 2,000 pounds.
- Will fit and support all Types of 8" duct.

Features both internal and external rebar holders.
Available in labor-saving factory assemblies'
Multiples of 2, 3, or 4 way units.

Base unit inverts to form top cap for use as cover,
Gauge or platform for size change.

\$100.00 Net Minimum Billing

Orders are accepted subject to the prices and terms in affect at the time of the shipment.

Terms Net 30 Days From Invoice Date.

Return Goods Policy

A 25% re-stocking charge will be made on orders returned, transportation prepaid, to the original shipping point following authorization from GSIB/UNDERGROUND PRODUCTS. Authorization will be granted only under the conditions that the quantities to be returned do not exceed 25% of the quantity ordered, the goods are in salable condition in the original cartons, and the request is made within 120 days of the shipping date.

Plastic duct spacers

For completely enclosed and locked duct banks.

They snap together, vertically, slide together horizontally

For fast, secure field assembly.

Only two components, base and intermediate, are needed.

Banding is not necessary.

With the Vertical-lok spacer, ducts are accurately separated.

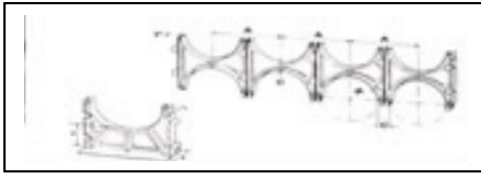
Spacers lock firmly together, preventing separation.

Alignment of the duct bank sections is relatively easy with this completely locked-in construction.

To prevent the top tier from floating during encased burial, it is suggested that an intermediate spacer be used as a cap.

Used in both EB and DB installations.

Intermediate and Base Spacer Dimensions



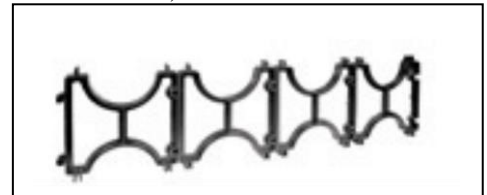
Base spacers provide a 3" separation between bottom row of ducts & trench floor, except for 4" x 1" which is 1-3/4"



1 Vertical and horizontal interlocking permits building strong, lock-in duct bank. A wide baseplate provides solid support for heaviest loads.

2 Just a push gives firm vertical locking (Suggested Method)

3 Units slide together for horizontal locking (For unusual conditions).



No extra charge for factory assembled multiples in 2 or 3 or 4 way units SPECIFY WHEN ORDERING.

ALL DIMENSIONS ARE IN INCHES

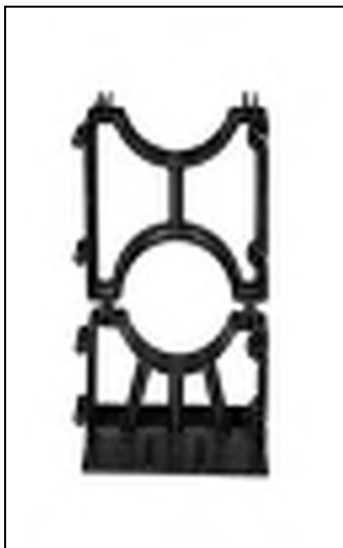
1" Separation	1 1/2" Separation			2" Separation			3" Separation		
	R	A	C	R	A	C	R	A	C
Saddle spacers only									
Saddle spacers only									
2.3 5.6 1.0									
Saddle spacers only									
-- -- --									
-- -- --									

Intermediate Spacers

1" Sep.				1-1/2" Sep.				2" Sep.				3" Sep.			
Duct Size	Prod. Code	Std. Pack	Wght. Lbs.	Duct Size	Prod. Code	Std. Pack	Wght. Lbs.	Duct Size	Prod. Code	Std. Pack	Wght. Lbs.	Duct Size	Prod. Code	Std. Pack	Wght. Lbs.
				2"	150-1	350	34	2"	152-1	300	31	2"	154-1	200	27
				3"	156-1	225	32	3"	158-1	200	31	3"	160-1	125	23
4"	120-1	200	37	4"	185-1	150	30	4"	124-1	125	28	4"	189-1	90	26
				5"	128-1	100	28	5"	130-1	100	30	5"	191-1	80	23
				6"	132-1	100	27	6"	134-1	90	31	6"	162-1	70	26
				8"	196-1	60	28	8"	198-1	60	31				

Base Spacers

1" Sep.				1-1/2" Sep.				2" Sep.				3" Sep.			
Duct Size	Prod. Code	Std. Pack	Wght. Lbs.	Duct Size	Prod. Code	Std. Pack	Wght. Lbs.	Duct Size	Prod. Code	Std. Pack	Wght. Lbs.	Duct Size	Prod. Code	Std. Pack	Wght. Lbs.
				2"	151-1	250	31	2"	153-1	225	33	2"	155-1	225	35
				3"	157-1	175	31	3"	159-1	155	28	3"	161-1	150	32
4"	121-1	175	37	4"	186-1	140	39	4"	125-1	140	42	4"	190-1	120	40
				5"	129-1	120	40	5"	131-1	120	48	5"	192-1	100	38
				6"	133-1	100	33	6"	135-1	100	42	6"	163-1	95	38
				8"	197-1	50	27	8"	199-1	50	29				



Accessories

Cap-Lok Low cost way To top off Duct bank

Size	Part#	Std. Pack	Weight lbs.
2"	94-1	200	8
3"	95-1	200	9
4"	96-1	150	8
5"	97-1	100	7
6"	98-1	100	7



Internal Lock Coupling

...for use on EB or DB AT8546 PVC Duct. Eliminates the use of solvent cement with flush type coupling. Ideal for repairs, 3-1/2" and 4" sizes

Nominal Size	Prod. Code	Std. Pack	Weight lbs.
3-1/2"	86-1	24	5
4"	87-1	24	5

Adapter

A 1" square adapter that fits into the locking mechanism of the base and intermediate spacer. The adapter allows you then to turn a base spacer over on top of an intermediate. This gives you a flat, stable surface for concrete encasement.



Rebar Holder

...to quickly make vertical and horizontal rebar cages. Secure way to reinforce and anchor a duct bank. Rebar holder locks to the side of the GS Industries spacers forming a recess for horizontal rebars up to 1/2". Also includes a solid walled channel to guide and hold vertical rebars to obtain larger vertical separation.

Spacer Size	Prod. Code	Std. Pack	Weight lbs.
2"-3"	92-1	100	5
4"-6"	93-1	100	6



Multiple pipe size adapter... Dual Sizer

...a better way to combine multiple size pipe in the same underground duct run. Fits GS Industries' spacer sizes 4", 5" and 6"

Nominal Pipe Size	Prod. Code	Std. Pack	Weight lbs.
1"	71-1	250	8
2"	72-1	150	7



Spacer Link

Interlock with Base and Intermediate Spacers to provide additional horizontal separation

Link Separation	Prod. Code	Std. Pack	Weight Lbs.
1"	89-1	200	34
2"	90-1	400	21
3"	91-1	212	20

PLUGS

Expandable Watertight Plugs



Can be used for long term plugging of almost all types of 4" conduit...plastic, fiber, asbestos – cement and multi-duct concrete.

4" Molded outer shell and molded expandable rubber ring provide a positive, secure seal in the duct. Shoulder tabs prevent loss of plug in the duct.

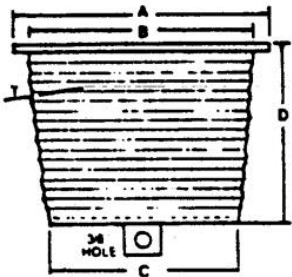


Nominal Size	Prod. Code	Std. Pack	Weight lbs.
4"	65-1	36	21

Plastic Universal and Regular Plugs for temporarily plugging duct, bell-ends and terminators. These polyethylene plugs come in sizes to fit all types of manufactured duct, even when it's bell-ended or coupling is attached. Underground Product's extended lip design permits easy extraction.

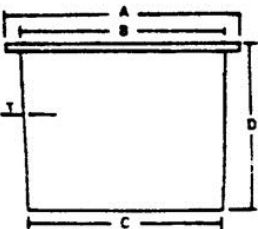
Universal Plugs

Nominal Size	Prod. Code	Std. Pack	Weight lbs.	Dimensions				
				A	B	C	D	T
2"	139-1	176	11	3.15	2.60	1.20	2.90	.100
3"	143-1	200	34	4.25	3.65	2.75	3.75	.100
4"	140-1	180	39	5.40	4.70	3.70	3.90	.100
5"	141-1	100	26	6.30	5.75	4.80	3.75	.100
6"	142-1	90	32	7.35	6.80	5.82	3.75	.100
				All dimensions are in inches				



Regular Plugs

Nominal Size	Prod. Code	Std. Pack	Weight lbs.	Dimensions				
				A	B	C	D	T
2"	54-1	100	10	2.85	2.10	1.80	2.85	.125
3"	55-1	100	18	3.85	3.15	2.80	2.80	.125
3-1/2"	56-1	100	20	4.35	3.65	3.40	2.85	.125
4"	57-1	100	20	4.85	4.15	3.80	2.90	.125
5"	60-1	80	25	5.90	5.20	4.75	3.75	.125
6"	61-1	60	26	6.90	6.20	5.75	3.80	.125
4" long	145-1	100	26					
				All dimensions are in inches				



UNDERGROUND PRODUCTS

Manufacturing and Customer Service

Bassett, VA 24054 Phone: 800-445-2192, 276-629-5317

Fax: 276-629-1264

GS INDUSTRIES OF BASSETT, LTD./ BASSETT, VIRGINIA, U.S.A. 24055

Specifications subject to change without notice/GS Industries products are protected by patents internationally